

**CHEROKEE COUNTY  
SCHOOL DISTRICT**

**COMPREHENSIVE ANNUAL  
FINANCIAL REPORT**



Cherokee County  
School District

**FISCAL YEAR ENDED JUNE 30, 2019**

**CANTON, GEORGIA**



# Cherokee County School District

COMPREHENSIVE ANNUAL FINANCIAL REPORT  
FOR THE FISCAL YEAR ENDED JUNE 30, 2019  
CANTON, GEORGIA

PREPARED BY:  
CHEROKEE COUNTY SCHOOL DISTRICT  
DIVISION OF FINANCIAL MANAGEMENT  
KENNETH OWEN, CHIEF FINANCIAL OFFICER

# Introductory Section

---



Cherokee County  
School District

**Cherokee County School District  
Comprehensive Annual Financial Report  
For the Fiscal Year Ended June 30, 2019**

**TABLE OF CONTENTS**

**Introductory Section**

Table of Contents	i-iii
Letter of Transmittal	iv-ix
Board Members	x
Organizational Chart	xi

**Financial Section**

Independent Auditor's Report	1-3
Management's Discussion and Analysis	4-14

**Basic Financial Statements:**

Government-wide Financial Statements:

Statement of Net Position	15
Statement of Activities	16

Fund Financial Statements:

Balance Sheet – Governmental Funds	17
Reconciliation of the Governmental Balance Sheet to the Statement of Net Position	18
Statement of Revenues, Expenditures, and Changes in Fund Balances – Governmental Funds	19
Reconciliation of the Statement of Revenues, Expenditures, and Changes in Fund Balances to the Statement of Activities	20
General Fund – Statement of Revenues, Expenditures, and Changes in Fund Balance – Budget to Actual	21
Capital Projects Fund – Statement of Revenues, Expenditures, and Changes in Fund Balance – Budget to Actual	22
Debt Service Fund – Statement of Revenues, Expenditures, and Changes in Fund Balance – Budget to Actual	23
Statement of Fiduciary Assets and Liabilities – Agency Fund	24

Notes to the Basic Financial Statements	25-54
---	-------

**Required Supplementary Information:**

Schedule of Proportionate Share of Net Pension Liability – Teachers Retirement System of Georgia	55
Schedule of Contributions – Teachers Retirement System of Georgia	56
Schedule of Proportionate Share of Net Pension Liability – Employees' Retirement System of Georgia	57
Schedule of Contributions – Employees' Retirement System of Georgia	58
Schedule of Proportionate Share of Net Pension Liability – Public School Employees Retirement System of Georgia	59

**Cherokee County School District  
Comprehensive Annual Financial Report  
For the Fiscal Year Ended June 30, 2019**

Schedule of Proportionate Share of Net Pension Liability	60
– School OPEB Fund	60
Schedule of Contributions – School OPEB Fund	61
Notes to the Required Supplementary Information	62

**Combining and Individual Fund Financial Statements and Schedules**

Statement of Changes in Fiduciary Assets and Liabilities	
– Agency Fund	63

**Special Reports Section:**

Schedule of Expenditures of Educational Local Option Sales Tax Proceeds	64
---	----

**Statistical Section**

**Financial Trends** – These schedules contain trend information to help the reader understand how the Board’s financial performance and well-being have changed over time.

Net Position by Component	65
Changes in Net Position	66
Fund Balances – Governmental Funds	67
Changes in Fund Balances – Governmental Funds	68

**Revenue Capacity** – These schedules contain information to help the reader access the Board’s most significant local revenue source, property tax.

Assessed Value and Estimated Actual Value of Property by Type	69
Property Tax Rates – Direct and Overlapping Governments	70
Principal Property Taxpayers	71
Property Tax Levies and Collections	72

**Debt Capacity** – These schedules present information to help the reader assess the affordability of the Board’s current levels of outstanding debt and the Board’s ability to issue additional debt in the future.

Ratios of Total Debt Outstanding by Type	73
Ratios of General Bonded Debt Outstanding	74
Direct and Overlapping Governmental Activities Debt	75
Legal Debt Margin	76

**Cherokee County School District  
Comprehensive Annual Financial Report  
For the Fiscal Year Ended June 30, 2019**

**Economic & Demographic** – These schedules offer demographic and economic indicators to help the reader understand the environment within which the Board’s financial activities take place.

Demographic and Economic Statistics	77
Principal Employers	78

**Operating Information** – These schedules contain service and infrastructure data to help the reader understand how the information in the Board’s financial report related to the services the Board provides and the activities it performs.

Employees by Function	79
Teacher Salary Schedule	80
School Building Capacity	81-82
Number of Personnel and Ratio of Pupils to Professional Personnel	83
Operating Statistics	84

**Compliance Section**

Independent Auditor’s Report on Internal Control over Financial Reporting and on Compliance and Other Matters Based on an Audit of Financial Statements Performed in Accordance with <i>Government Auditing Standards</i>	85-86
Independent Auditor’s Report on Compliance for Each Major Federal Program and on Internal Control Over Compliance Required by the Uniform Guidance	87-88
Schedule of Expenditures of Federal Awards	89-90
Schedule of Findings and Questioned Costs	91-92



DR. BRIAN V. HIGHTOWER  
*Superintendent of Schools*

KYLA CROMER  
*School Board Chair*

KELLY POOLE  
*School Board Vice-Chair*

MIKE CHAPMAN

JOHN HARMON

PATSY JORDAN

CLARK MENARD

ROBERT RECHSTEINER

December 17, 2019

To: Members of the Cherokee County Board of Education  
Citizens of Cherokee County

Please see the attached Comprehensive Annual Financial Report (CAFR) for the fiscal year that ended June 30, 2019, submitted on behalf of the Cherokee County School District. The report that follows was prepared by staff within the Division of Financial Management as fulfillment of the requirements for audit prescribed by Georgia Statutes for local boards of education, as well as the Single Audit Requirements of Federal and State governments.

The CAFR conforms to generally accepted accounting principles as applied to governmental entities, as well as to standards of the Governmental Accounting Standards Board (GASB) and the Government Finance Officers Association (GFOA). Responsibility for the accuracy, completeness and fairness of the information presented, including all disclosures and assurances, rests with the School District management team, based on a comprehensive framework of internal controls established for this purpose. Because the cost of internal control should not exceed anticipated benefits, the objective is to provide reasonable, rather than absolute, assurance that the financial statements are free of any material misstatements.

Williamson and Company CPAs has issued an unmodified ("clean") opinion on the School Board's financial statements for the fiscal year that ended June 30, 2019. The independent auditor's report is located at the front of the financial section of this report.

Management's Discussion and Analysis (MD&A) immediately follows the independent auditor's report and provides a narrative introduction, overview and analysis of the basic financial statements. The MD&A complements this letter of transmittal and should be read in conjunction with it.

Following the MD&A are the basic financial statements, including the government-wide financial statements, the fund financial statements and the

notes to the financial statements. The required supplementary information and the statistical section complete the CAFR.

### **Profile of Cherokee County School District**

The Cherokee County School District is a political subdivision of the State of Georgia, separate from and legally and fiscally independent of Cherokee County and all other political subdivisions. The boundaries of the School District are coterminous with the territorial limits of Cherokee County. The School District is the only school district in Cherokee County and is vested by the Georgia Constitution and enabling legislation with the power to conduct a system of kindergarten through grade twelve public education within the territorial limits of Cherokee County.

Under the Georgia Constitution, the Cherokee County Board of Education (School Board) was created to manage and control the School District. The School Board consists of seven members, six elected within designated geographic districts and one Chair elected on a county-wide basis by all qualified voters of Cherokee County. Each School Board member is elected to office for a term of four years or until his/her successor is elected and qualified.

The School Superintendent is the Chief Executive Officer of the Board of Education and is employed by the School Board under written contract for a term of not less than one year and not more than three years. The School Superintendent acts as the Secretary of the Board of Education, ex officio.

Dr. Brian V. Hightower has been the Superintendent of Schools for the School District since February 1, 2016 and is responsible for the day-to-day operations of the School District. Dr. Hightower has been employed by the School District for 33 years, and, prior to his appointment as Superintendent, served in various capacities, including teacher, assistant principal, principal, Director of School Operations, Assistant Superintendent of School Operations and Deputy Superintendent. Dr. Hightower's educational background includes the following: Reinhardt College (A.A., Liberal Arts), Kennesaw State University (B.S., Education, 7-12), North Georgia College & State University (M.Ed., Education, 7-12), Georgia State University (Ed.S., Education, 4-8), and Samford University (Ed.D., Educational Leadership).



The School District is comprised of 23 elementary schools, seven middle schools, six high schools, one alternative school, one evening school, one special education school and one pre-school center. These facilities currently serve 42,496 students. All schools are accredited by the Georgia Accrediting Commission and have met requirements for Standard Schools as set forth by the Georgia Department of Education. The School District and its schools are accredited by AdvancED.

As of October 2019, the School District employed 4,851 full time employees in the following categories:



All certified classroom teachers hold Bachelor’s degrees, with 70% earning advanced degrees (Master’s, Specialist’s and/or Doctoral degrees). The 2019-20 school year estimated overall pupil-teacher ratio, not including non-teaching personnel (such as counselors, therapists and media specialists), is 16:1.

#### Local Economy and Outlook

Cherokee County is located approximately 35 miles north of the City of Atlanta, a major national center for finance, transportation, distribution and communications. The Cherokee community benefits from this proximity, particularly as it relates to the earnings potential for residents.

The per capita income in Cherokee County is approximately 11% above that of the State of Georgia and growing at a rate of 2.6% in 2017, the latest year for which figures are available. The median household income in Cherokee County was \$75,477 in 2017, compared to the State average of \$52,977 and the National average of \$57,652.

The 2019 median home value in Cherokee County was \$265,700, a 5.7% increase over 2018. Home values are projected to increase another 5.3% in 2020. This translates to a growing tax digest that has greatly benefited the

students of Cherokee County. After tax base declines during 2009, 2010 and 2011 (as a direct result of the national recession), the Cherokee County tax digest has grown an average of more than 6.5% in each of the last six years.

Sales tax collections are a major indicator of the strength of a local economy. In Cherokee County, collections from the Education Special Purpose Local Sales Tax (Ed-SPLOST) have grown by more than 38% since 2011 and approximately 46.3% since 2004. In fact, revenue from the one percent sales tax has grown in every year since 1998 except for four (3 of which were due to the national recession), with many of those years growing in double digits. This, along with the strong growth in the tax digest, indicate a healthy and thriving economy.

Due in large part to the strong and healthy local economy, the School District has seen two credit rating upgrades since 2015. Moody's credit rating is currently Aa2 with a Stable outlook and S&P's credit rating is currently AA with a Stable outlook. Both credit agencies cited a large, diverse tax base, stable and growing reserves and positive general fund results in recent years as rationale for credit rating upgrades.

#### **Long Term Financial Planning**

Unrestricted fund balances in all funds have increased in recent years, in large part due to increased revenues but also due to expenditure controls, management inquiry and analysis and School Board expectations. The unassigned general fund balance at June 30, 2019 is \$54.8 million, representing 13% of the previous year budgeted expenditures, which is well within the School Board's Policy of 12-15%. Debt service fund balance is anticipated to increase by \$22.2 million due to Ed-SPLOST collections coming in above projections, strong growth in property tax digest and lower debt service costs for the year.

The School District plans capital improvements as needs arise due to increased student population, age of the physical plant and future growth patterns. Formalized capital outlay plans are reviewed at least annually and are generated based on enrollment forecasts, facility assessments and anticipated revenue.

The School District relies on revenue generated by the Education Special Purpose Local Option Sales Tax (Ed-SPLOST), approved overwhelmingly by voters in November 2016, for repayment of bonds issued in previous years that resulted in 21 new and replacement schools, installation of major technology infrastructure, land acquisition and major renovations of aging facilities. Additionally, in June 2017 and again in June 2019 the School Board approved shifting one-half mill in property tax from Maintenance and Operations to Debt Service (total of 1 mill beginning in 2019) to generate supplementary revenue to permit use of monthly Ed-SPLOST funds for current expenditures, such as replacement of classroom technology devices and major building repairs.

Formal School Board Policies relative to financial management are analyzed annually in order to provide a strong basis for ongoing financial decisions. The following are examples of such Policies:

- Goals and Objectives (Revised 2019)
- Annual Operating Budget (Revised 2016)
- Fund Balance (Revised 2017)
- Debt Management (Adopted 2017)
- Accounting and Reporting – Capital Assets (Adopted 2017)
- Cash Management and Investments (Adopted 2018)
- Expenditure of Funds (Revised 2018)
- Contract and Compensation Procedures (Revised 2019)
- Purchasing (Revised 2018)
- Student Activities Funds Management (Revised 2018)

#### **Awards and Acknowledgements**

The GFOA awards a Certificate of Achievement for Excellence in Financial Reporting to governmental entities annually. The CAFR for year ending June 30, 2018 was the first year the School District developed a CAFR and submitted to GFOA for consideration of this important award. While the FY2018 CAFR was not awarded a Certificate of Achievement, valuable feedback was provided by GFOA and is reflected in the FY2019 CAFR attached.

The School District's FY2020 Annual Budget received the Silver award from the Georgia School Public Relations Association (GSPRA) for Special Publications based on readability, use of graphics and ease of understanding.

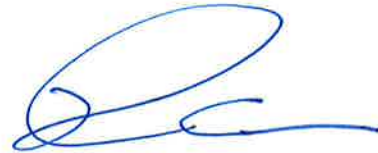
Future iterations of the Annual Budget will be submitted to GFOA for consideration of the Distinguished Budget Presentation Award.

The preparation of this report was completed by the dedicated and professional staff within the Office of Financial Management. Specifically, Jenna Williams, Coordinator for Financial Compliance and Reporting, and Marjorie DeFrank, Executive Director for Financial Management, are to be commended for their devotion to task and content area expertise.

Respectfully submitted,



Dr. Brian V. Hightower  
Superintendent of Schools



Kenneth L. Owen  
Chief Financial Officer

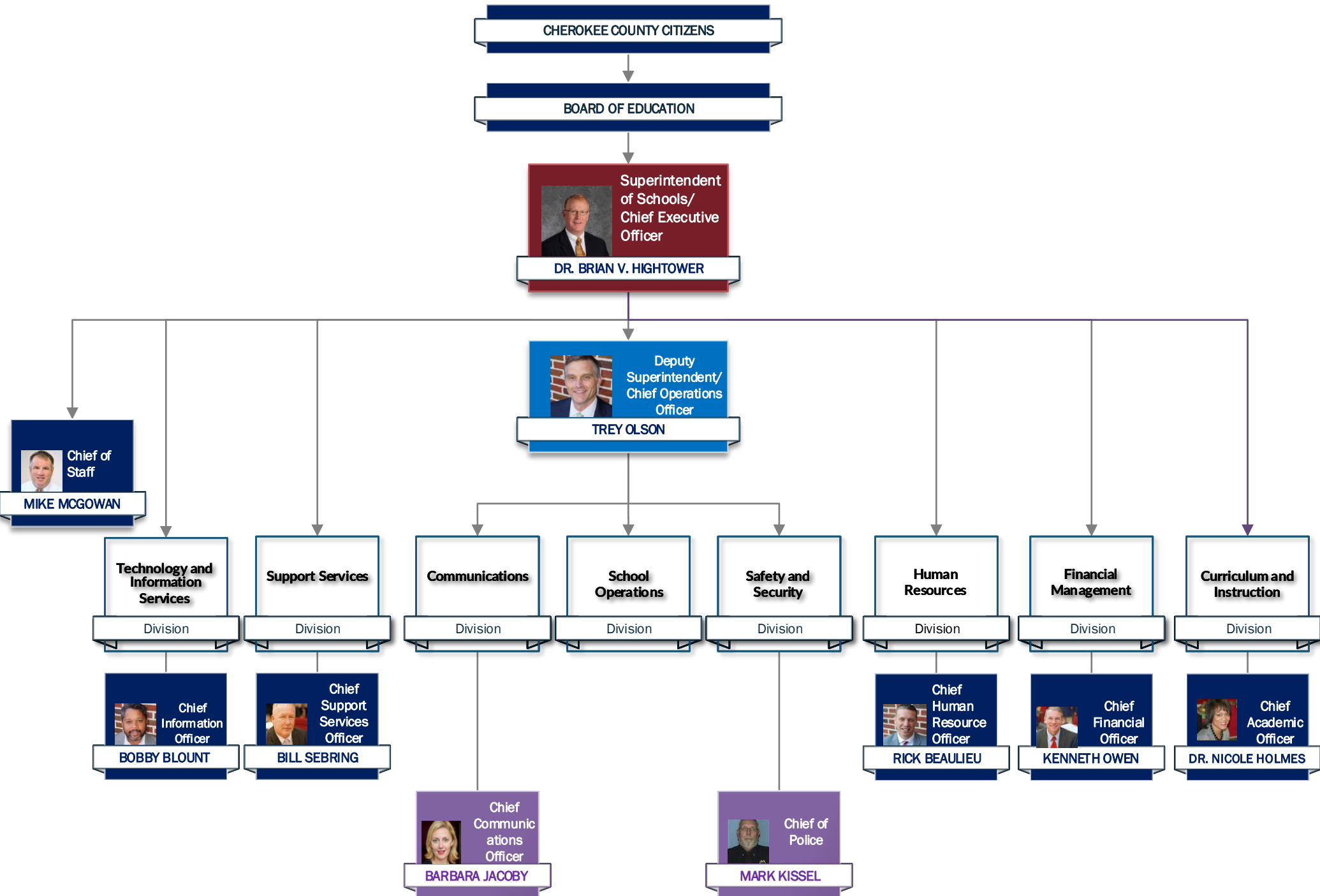
## SCHOOL BOARD MEMBERS



Front row, from left, Vice-Chair, Kelly Poole (District 1), Chair, Kyla Cromer and Patsy Jordan (District 2). Back row from right, Superintendent Dr. Brian Hightower, Robert Rechsteiner (District 4), Mike Chapman (District 6), John Harmon (District 3) and Clark Menard (District 5).

**Kyla Cromer, School Board Chair**  
**Kelly Poole, School Board Vice-Chair**  
**Mike Chapman**  
**John Harmon**  
**Patsy Jordan**  
**Clark Menard**  
**Robert Rechsteiner**

# CCSD Organizational Chart of Divisions - - SY 2017-18 and SY 2018-19



# Financial Section

---



Cherokee County  
School District

P.O. BOX 473  
CARTERSVILLE, GA 30120  
(770) 382-3361  
FAX (770) 386-8382  
WWW.WCPAS.COM



LLOYD WILLIAMSON  
CHRISTIAN HATCH

---

## INDEPENDENT AUDITOR'S REPORT

To the Superintendent and Members of  
The Cherokee County Board of Education  
Canton, Georgia

### Report on the Financial Statements

We have audited the accompanying financial statements of the governmental activities, each major fund, and the aggregate remaining fund information of the Cherokee County School District (the "School District"), as of and for the year ended June 30, 2019, and the related notes to the financial statements, which collectively comprise the School District's basic financial statements as listed in the table of contents.

### Management's Responsibility for the Financial Statements

Management is responsible for the preparation and fair presentation of these financial statements in accordance with accounting principles generally accepted in the United States of America; this includes the design, implementation, and maintenance of internal control relevant to the preparation and fair presentation of financial statements that are free from material misstatement, whether due to fraud or error.

### Auditor's Responsibility

Our responsibility is to express opinions on these financial statements based on our audit. We conducted our audit in accordance with auditing standards generally accepted in the United States of America and the standards applicable to financial audits contained in *Government Auditing Standards*, issued by the Comptroller General of the United States. Those standards require that we plan and perform the audit to obtain reasonable assurance about whether the financial statements are free of material misstatement.

An audit involves performing procedures to obtain audit evidence about the amounts and disclosures in the financial statements. The procedures selected depend on the auditor's judgment, including the assessment of the risks of material misstatement of the financial statements, whether due to fraud or error. In making those risk assessments, the auditor considers internal control relevant to the entity's preparation and fair presentation of the financial statements in order to design audit procedures that are appropriate in the circumstances, but not for the purpose of expressing an opinion on the effectiveness of the entity's internal control. Accordingly, we express no such opinion. An audit also includes evaluating the appropriateness of accounting policies used and the reasonableness of significant accounting estimates made by management, as well as evaluating the overall presentation of the financial statements.

We believe that the audit evidence we have obtained is sufficient and appropriate to provide a basis for our audit opinions.



## **Opinions**

In our opinion, the financial statements referred to above present fairly, in all material respects, the respective financial position of the governmental activities, each major fund, and the aggregate remaining fund information of the Cherokee County School District, as of June 30, 2019, and the respective changes in financial position and the respective budgetary comparisons for the General Fund, Capital Projects Fund, and Debt Service Fund for the year then ended in accordance with accounting principles generally accepted in the United States of America.

## **Other Matters**

### *Required Supplementary Information*

Accounting principles generally accepted in the United States of America require that the Management's Discussion and Analysis on pages 4-14 and the schedules related to the School District's pension plan and other post-employment benefits plan on pages 55-62 be presented to supplement the basic financial statements. Such information, although not a part of the basic financial statements, is required by the Governmental Accounting Standards Board, who considers it to be an essential part of financial reporting for placing the basic financial statements in an appropriate operational, economic, or historical context. We have applied certain limited procedures to the required supplementary information in accordance with auditing standards generally accepted in the United States of America, which consisted of inquiries of management about the methods of preparing the information and comparing the information for consistency with management's responses to our inquiries, the basic financial statements, and other knowledge we obtained during our audit of the basic financial statements. We do not express an opinion or provide any assurance on the information because the limited procedures do not provide us with sufficient evidence to express an opinion or provide any assurance.

### *Other Information*

Our audit was conducted for the purpose of forming opinions on the financial statements that collectively comprise the Cherokee County School District's basic financial statements. The introductory section, statistical section, Schedule of Expenditures of Educational Local Option Sales Tax Proceeds, as required by the Official Code of Georgia §48-8-121 and the Schedule of Expenditures of Federal Awards as required by Title 2 U.S. Code of Federal Regulations (CFR) Part 200, *Uniform Administrative Requirements, Cost Principles, and Audit Requirements for Federal Awards*, are presented for purposes of additional analysis and are not a required part of the basic financial statements.

The Schedule of Expenditures of Educational Local Option Sales Tax Proceeds and the Schedule of Expenditures of Federal Awards are the responsibility of management and were derived from and relate directly to the underlying accounting and other records used to prepare the basic financial statements. Such information has been subjected to the auditing procedures applied in the audit of the basic financial statements and certain additional procedures, including comparing and reconciling such information directly to the underlying accounting and other records used to prepare the basic financial statements or to the basic financial statements themselves, and other additional procedures in accordance with auditing standards generally accepted in the United States of America. In our opinion, the Schedule of Expenditures of Educational Local Option Sales Tax Proceeds and the Schedule of Expenditures of Federal

Awards are fairly stated in all material respects in relation to the basic financial statements as a whole.

The introductory and statistical sections have not been subjected to the auditing procedures applied in the audit of the basic financial statements and, accordingly, we do not express an opinion or provide any assurance on them.

**Other Reporting Required by Government Auditing Standards**

In accordance with Government Auditing Standards, we have also issued our report dated December 9, 2019 on our consideration of the Cherokee County School District's internal control over financial reporting and on our tests of its compliance with certain provisions of laws, regulations, contracts and grant agreements, and other matters. The purpose of that report is to describe the scope of our testing of internal control over financial reporting and compliance, and the results of that testing, and not to provide an opinion on internal control over financial reporting or on compliance. That report is an integral part of an audit performed in accordance with *Government Auditing Standards* in considering the Cherokee County School District's internal control over financial reporting and compliance.



Williamson and Company  
Certified Public Accountants  
December 9, 2019

# CHEROKEE COUNTY SCHOOL DISTRICT

## Management's Discussion and Analysis

For the Year ended June 30, 2019

### Introduction

The discussion and analysis of the Cherokee County School District's (the "School District") financial performance provides an overview of the School District's financial activities for the fiscal years ended June 30, 2019 and June 30, 2018. The intent of this discussion and analysis is to look at the School District's financial performance as a whole. Readers should also review the notes to the basic financial statements and the financial statements to enhance their understanding of the School District's financial performance.

### Financial Highlights

Key financial highlights for fiscal year 2019 are as follows:

- Total revenue increased from \$468.5 million in 2018 to \$496.4 million in 2019, an increase of \$27.9 million, or 6.0%. The revenue increase was primarily from higher state funding and increased property and sales taxes.
- Total Fund Balance increased from \$151.1 million in 2018 to \$154.7 million in 2019, an increase of \$3.5 million, or 2.3%. The increase is largely due to the property and sales tax revenue increases and to lower debt service costs in the Debt Service fund, which increased fund balance from \$50.7 million in 2018 to \$72.9 million in 2019, an increase of 43.5%. These increases were offset by a decrease in the Capital Projects' fund balance of \$25.3 million primarily due to capital expenditures of \$28.6 million in fiscal year 2019. The General Fund's fund balance increased by \$6.7 million.
- Total net position changed from negative \$357.4 million in 2018 to negative \$327.3 million in 2019, an increase of \$30.2 million, or an improvement of net position of 8.4%, which is primarily due to principal payments of \$9.4 million and amortization of bond premiums of \$6.8 million on General Obligation bonds during fiscal year 2019. The changes in balances related to state administered pension and other postemployment benefits (OPEB) plans in which the School District participates for the benefit of its employees also resulted in an increase to net position of \$7.8 million during fiscal year 2019.

### Overview of the Financial Statements

This annual report consists of three parts; management's discussion and analysis, the basic financial statements and required supplementary information. The basic financial statements include two levels of statements that present different views of the School District. These include the Government-wide and fund financial statements.

The Government-wide financial statements include the Statement of Net Position and Statement of Activities. These statements provide information about the activities of the School District presenting both short-term and long-term information about the overall financial status.

The fund financial statements focus on individual parts, reporting the School District's operation in more detail. The Governmental Funds statements disclose how basic services are financed in

## **CHEROKEE COUNTY SCHOOL DISTRICT**

### **Management's Discussion and Analysis**

**For the Year ended June 30, 2019**

the short-term as well as what remains for future spending. The Fiduciary Funds statements provide information about the financial relationships in which the School District acts solely as a trustee or agent for the benefit of others.

The fund financial statements reflect the School District's most significant funds. For the years ending June 30, 2019 and 2018, the General Fund, the Capital Projects Fund, and the Debt Service Fund represent the most significant funds.

The financial statements also include notes that explain some of the information in the statements and provide more detailed data. The statements are followed by a section of required supplementary information that further explains and supports the financial statements. Additionally, other supplementary information (not required) is presented that further supplements understanding of the financial statements.

### **Government-wide Statements**

The government-wide financial statements provide readers with a broad overview of the School District's finances, in a manner similar to a private-sector business.

The Statement of Net Position presents information on all of the School District's assets, deferred outflows of resources, liabilities, and deferred inflows of resources with the difference between them reported as net position. Over time, increases or decreases in net position may serve as a useful indicator of whether the financial position of the School District is improving or deteriorating.

The Statement of Activities presents information showing how the School District's net position changed during the most recent fiscal year. Changes in net position appear as soon as the underlying event giving rise to the change occurs, regardless of the timing of related cash flows. Thus, revenues and expenses appear in this statement for some items that will result in future fiscal period's cash flows (e.g., uncollected taxes and earned but unused vacation leave).

The Statement of Net Position and the Statement of Activities reflect the School District's governmental activities.

### **Fund Financial Statements**

A fund is a grouping of related accounts used to maintain control over resources that have been segregated for specific activities or objectives. The School District, like other state and local governments, uses fund accounting to ensure and demonstrate compliance with finance-related legal requirements. School District funds are comprised of governmental funds and fiduciary funds.

#### *Governmental Funds*

Most of the School District's activities are reported in governmental funds. The governmental fund statements focus on how money flows in and out of those funds and the balances left at year-end that are available for spending in future periods. These funds are reported using the modified accrual basis of accounting which measures cash and all other financial assets that can readily be converted to cash. These statements also provide a detailed short-term view of the School

**CHEROKEE COUNTY SCHOOL DISTRICT**

Management's Discussion and Analysis

For the Year ended June 30, 2019

District's general government operations and the basic services it provides. Governmental fund information helps determine whether there are more or fewer financial resources that can be spent in the near future to finance educational programs. The School District maintains numerous governmental funds with the majority of activities occurring in the General Fund. The differences between governmental activities (reported in Statement of Net Position and Statement of Activities) and governmental funds are reconciled in the financial statements.

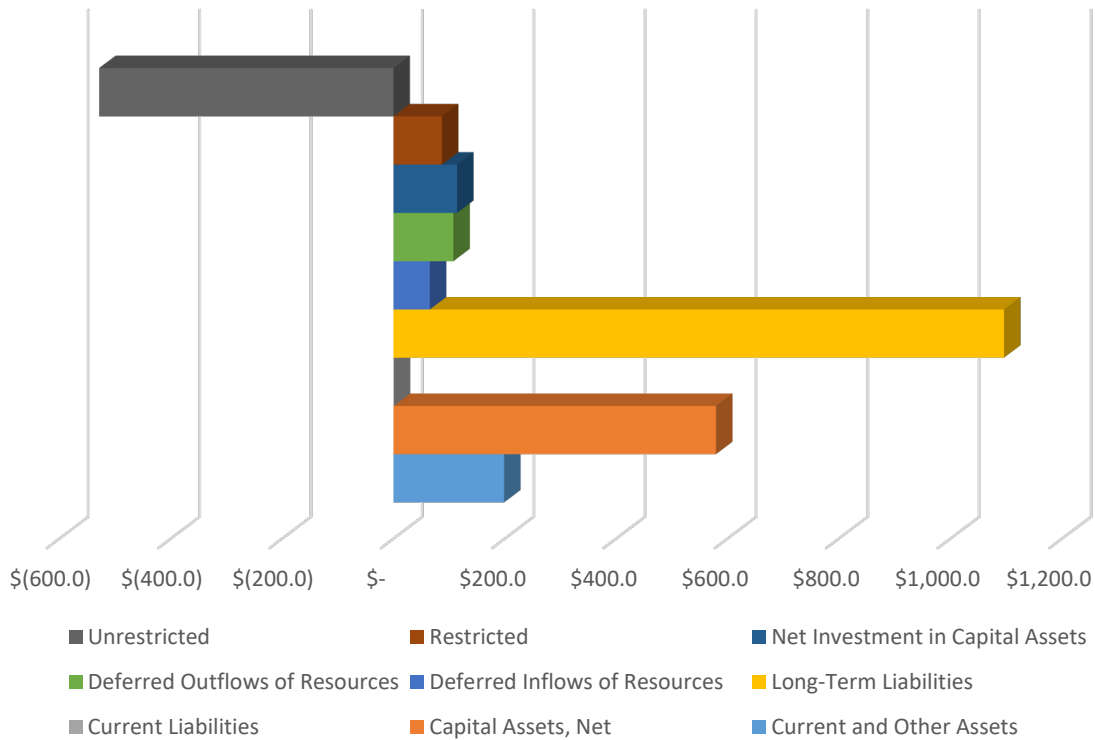
*Fiduciary Funds*

The School District is the trustee, or fiduciary, for assets that belong to others. The School District's fiduciary funds include the clubs and organizations within the Student Activity Fund. The School District is responsible for ensuring that the assets in this fund are used exclusively for their intended purposes for the benefit of those to whom the assets belong. The School District excludes this fund from the government-wide financial statements because it cannot use the assets to finance its operations.

**Financial Analysis of the School District as a Whole**

Recall that the Statement of Net Position provided the perspective of the School District as a whole. The graph and table below provide a summary of the School District's net position as of June 30, 2019 and 2018.

FY 2019 Net Position (amounts expressed in millions)



**CHEROKEE COUNTY SCHOOL DISTRICT**  
Management's Discussion and Analysis  
For the Year ended June 30, 2019

<b>Net Position</b>			
	<b>Governmental Activities</b>		<b>Change</b>
	<b>June 30, 2019</b>	<b>June 30, 2018</b>	<b>2018-2019</b>
<b>Assets</b>			
Current and Other Assets	\$ 198,787,415	\$ 194,155,577	2.4%
Capital Assets, Net	579,441,720	576,125,423	0.6%
<b>Total Assets</b>	<b>\$ 778,229,135</b>	<b>\$ 770,281,000</b>	<b>1.0%</b>
<b>Deferred Outflows of Resources</b>	<b>\$ 107,575,797</b>	<b>\$ 86,899,622</b>	<b>23.8%</b>
<b>Liabilities</b>			
Current Liabilities	\$ 51,658,186	\$ 49,708,993	3.9%
Long-Term Liabilities	1,096,063,167	1,136,281,960	-3.5%
<b>Total Liabilities</b>	<b>\$ 1,147,721,353</b>	<b>\$ 1,185,990,953</b>	<b>-3.2%</b>
<b>Deferred Inflows of Resources</b>	<b>\$ 65,326,054</b>	<b>\$ 28,627,544</b>	<b>128.2%</b>
<b>Net Position</b>			
Invested in Capital Assets	\$ 114,343,646	\$ 110,975,930	3.0%
Restricted	87,138,047	90,376,401	-3.6%
Unrestricted	(528,724,168)	(558,790,206)	-5.4%
<b>Total Net Position</b>	<b>\$ (327,242,475)</b>	<b>\$ (357,437,875)</b>	<b>8.4%</b>

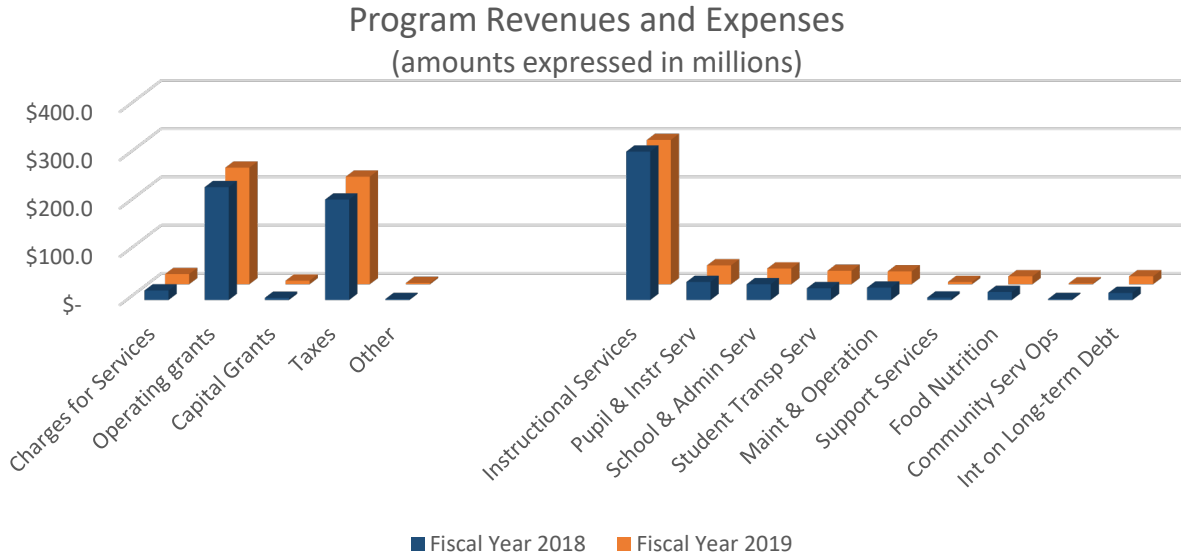
Governmental accounting standards require the School District to report its proportional liability of state administered pension and OPEB plans in which the School District participates for the benefit of its employees. The long-term liabilities related to Pension and OPEB at June 30, 2019 or \$639.7 million decreased by 3.5%, or \$23.5 million from June 30, 2018. Deferred Outflows of Resources reflected an increase of 23.8% and Deferred Inflows of Resources increased 128.2%, due to this reporting. Although the resulting negative net position of this reporting causes a deficit balance in unrestricted net position, it should not be considered a financial weakness as the pension and OPEB costs are spread out over multiple years well into the future.

# CHEROKEE COUNTY SCHOOL DISTRICT

## Management's Discussion and Analysis

For the Year ended June 30, 2019

The graph and table below show the Changes in Net Position for fiscal years ending June 30, 2019 and June 30, 2018.



### Changes in Net Position

	Governmental Activities		Change 2018-2019
	Fiscal Year 2019	Fiscal Year 2018	
<b>Revenues</b>			
Program Revenues			
Charges for Services	\$ 21,246,091	\$ 19,786,586	7.4%
Operating grants and Contributions	241,765,291	233,948,283	3.3%
Capital Grants and Contributions	7,441,006	4,600,742	61.7%
General Revenues			
Taxes	\$ 223,069,354	\$ 208,156,705	7.2%
Other	2,918,238	2,036,919	43.3%
<b>Total Revenues</b>	<b>\$ 496,439,980</b>	<b>\$ 468,529,235</b>	<b>6.0%</b>
<b>Expenses</b>			
Instructional Services	\$ 299,191,976	\$ 307,545,475	-2.7%
Pupil and Instructional Services	39,280,213	37,478,527	4.8%
School and Administrative Services	32,778,524	32,718,111	0.2%
Student Transportation Services	28,050,941	24,470,133	14.6%
Maintenance and Operation	26,885,475	25,712,187	4.6%
Support Services - Central	4,844,465	5,144,624	-5.8%
School Nutrition	16,652,579	16,709,035	-0.3%
Community Service Operations	2,003,057	2,133,240	-6.1%
Interest on Long-term Debt	16,557,350	14,683,311	12.8%
<b>Total Expenses</b>	<b>\$ 466,244,580</b>	<b>\$ 466,594,643</b>	<b>-0.1%</b>
<b>Increase (Dec) in Net Position</b>	<b>\$ 30,195,400</b>	<b>\$ 1,934,592</b>	<b>1460.8%</b>
<b>Beginning Net Position</b>	<b>(357,437,875)</b>	<b>(359,372,467)</b>	<b>-0.5%</b>
<b>Ending Net Position</b>	<b>\$ (327,242,475)</b>	<b>\$ (357,437,875)</b>	<b>8.4%</b>

## CHEROKEE COUNTY SCHOOL DISTRICT

### Management's Discussion and Analysis

For the Year ended June 30, 2019

#### *Revenues*

In 2019, the School District's total revenues increased 6.0%, or \$27.9 million, over the prior year due primarily to an increase in state funding and increased tax revenue.

- Operating Grants and Contributions increased 3.3%, or \$7.8 million, over the prior year due to an increase in state instructional program revenue.
- Capital Grants and Contributions increased 61.7%, or \$2.8 million, over the prior year due to increased state reimbursements to offset certain construction projects and increased investment earnings.
- General Revenues - Taxes increased 7.2%, or \$14.9 million, over the prior year due to a 6.1% increase in real property tax values and a 9.9% increase in sales taxes within the School District's county during the year ended June 30, 2019.

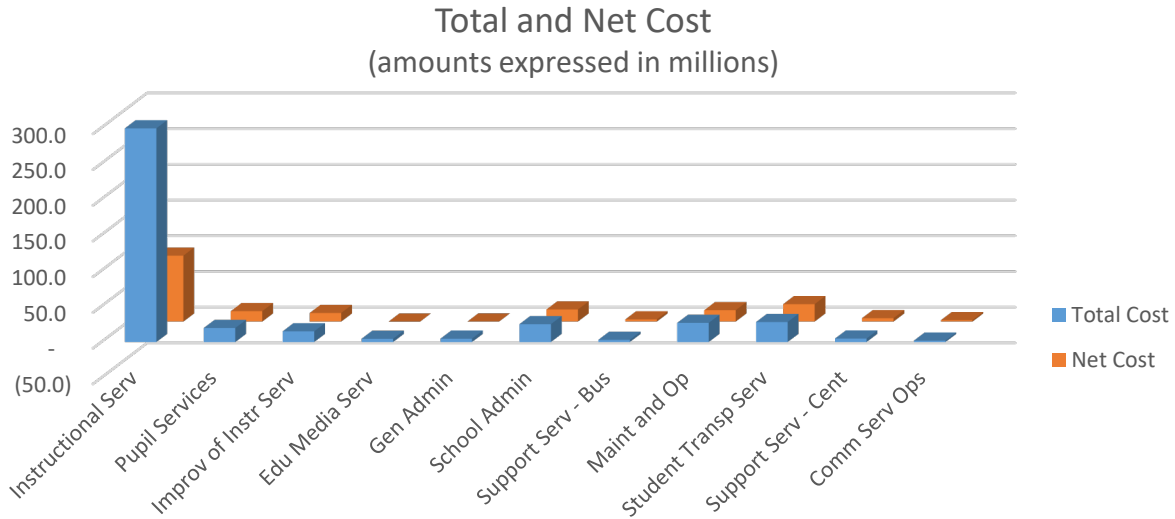
#### *Expenses*

In 2019, the School District's total expenses decreased 0.1%, or \$0.35 million, over the prior year due primarily to an increase in salaries and benefits, offset by decreases in postemployment expenses of state administered pension and OPEB plans and in instructional operating costs.

- The School District added 55 teachers in fiscal year 2019 to address student population growth and to further reduce Districtwide class sizes.
- Initiatives to attract and retain the best teachers, principals and support staff in fiscal year 2019 included providing a 1% cost-of-living raise and an annual longevity-step increase for all eligible employees.
- Increased required employer contributions to State Health Benefit Plan of \$99 per month per participating employee, and to Teacher Retirement System for rates 24.3% higher than prior year resulted in higher employee benefit costs in fiscal year 2019.
- Increased School District retirement and OPEB contributions subsequent to the measurement date reduced expense.
- Instructional operating costs decreased due to a reduction in textbook adoption costs and small equipment purchases during fiscal year 2019.



**CHEROKEE COUNTY SCHOOL DISTRICT**  
**Management's Discussion and Analysis**  
**For the Year ended June 30, 2019**



	Cost of Services			
	Total Cost of Services		Net Cost of Services	
	2019	2018	2019	2018
Instructional Services	\$ 299,191,976	\$ 307,545,475	\$ 92,336,625	\$ 108,138,220
Support Services				
Pupil Services	19,698,979	18,963,817	14,601,443	11,984,638
Improvement of Instructional Services	14,989,865	13,800,487	12,045,882	8,870,266
Educational Media Services	4,591,369	4,714,223	(27,125)	153,339
General Administration	4,716,707	4,665,197	121,326	3,873,134
School Administration	24,991,512	25,260,871	16,954,951	17,368,488
Support Services - Business	3,070,305	2,792,043	3,044,046	2,746,189
Maintenance and Operation	26,885,475	25,712,187	15,937,328	14,808,969
Student Transportation Services	28,050,941	24,470,133	24,351,552	21,571,473
Central Support Services	4,844,465	5,144,624	4,796,492	5,103,729
Operations and Noninstructional Services				
Community Service Operations	2,003,057	2,133,240	2,003,017	2,133,193
School Nutrition	16,652,579	16,709,035	(1,454,625)	(224,699)
Interest on Long-term Debt	16,557,350	14,683,311	11,081,280	11,732,093
<b>Total</b>	<b>\$ 466,244,580</b>	<b>\$ 466,594,643</b>	<b>\$ 195,792,192</b>	<b>\$ 208,259,032</b>

The Cost of Services table above shows, for governmental activities, the total cost of services and the net cost of services. Net cost of services can be defined as the total cost less fees generated by the activities and intergovernmental revenue provided for specific programs. The net cost reflects the financial burden on the School District's taxpayers by each activity (42.0% overall for the year ended June 30, 2019).

## **CHEROKEE COUNTY SCHOOL DISTRICT**

Management's Discussion and Analysis

For the Year ended June 30, 2019

### **Financial Analysis of the School District's Funds**

The School District ended fiscal year 2019 with a positive fund balance in its governmental funds. The combined balance of all governmental funds, at \$154.7 million, was 2.3% higher than 2018's ending balance of \$151.1 million. The General Fund's fund balance increased by \$6.7 million, or 11.0%. This level achieves the Board Policy goal of the School District achieving and maintaining an unassigned fund balance in the General Fund at fiscal year-end of not less than 12.0-15.0% of prior year general fund budgeted expenditures. Capital Projects fund decreased its fund balance by \$25.3 million, a decrease of 64.0%, due to capital expenditures made during fiscal year 2019 of \$28.6 million. Debt Service increased its fund balance by \$22.1 million, an increase of 43.5%.

### **General Fund Budgeting Highlights**

The most significant fund for the School District is the General Fund, funded primarily through state revenue and local property tax revenue. The State of Georgia is required to maintain a balanced budget (a constitutional requirement in Georgia), as are all state-funded school districts.

For the General Fund, actual revenues of \$440.9 million were 99.7% of the final budgeted amount of \$442.1 million. The final actual expenditures of \$434.2 million were 98.4% of the final budgeted amount of \$441.3 million. While budgeted revenues exceeded budgeted expenditures by \$0.8 million, actual results for the fiscal year show that expenditures were under revenues by \$6.7 million.

### **General Fund Balance**

As the operating fund of the School District, General Fund revenue from state and federal sources accounted for 54.4% of revenue. The other 45.6% is from local sources, primarily ad valorem taxes. In fiscal year 2019, state and federal funding increased by \$7.0 million, due to increased state funding for student enrollment growth and increased employee benefit costs, and due to the elimination of the austerity reduction. Local revenues increased by \$13.6 million. This is a result of 6.1% growth in the property tax digest over prior year. The School District's maintenance and operation millage rate is 18.95 mills, which remained the same as fiscal year 2018.

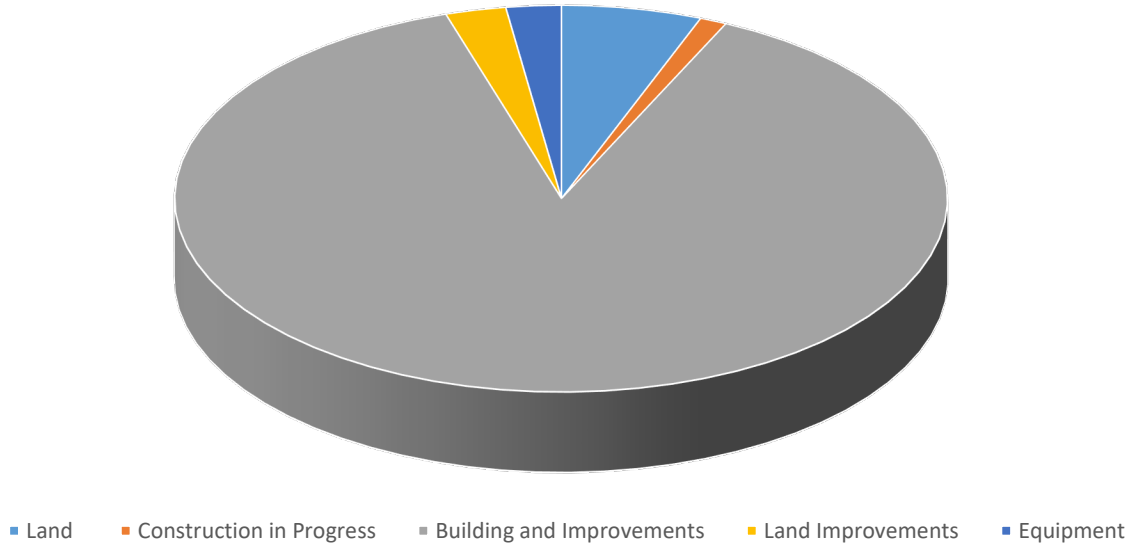
**CHEROKEE COUNTY SCHOOL DISTRICT**  
 Management's Discussion and Analysis  
 For the Year ended June 30, 2019

**Capital Assets and Debt Administration**

**Capital Assets**

As of June 30, 2019 and June 30, 2018, the School District had \$579.4 million and \$576.1 million, respectively, invested in a broad range of capital assets, including land, buildings, and furniture and equipment for its governmental activities.

FY 2019 Capital Assets



The table below summarizes and compares the capital assets for 2019 and 2018, breaking down the asset balances, by class, net of accumulated depreciation.

**Capital Assets  
 (Net of Accumulated Depreciation)**

	<b>Governmental Activities</b>	
	<b>Fiscal Year 2019</b>	<b>Fiscal Year 2018</b>
Land	\$ 33,975,645	\$ 31,248,204
Construction in Progress	6,531,152	2,116,527
Building and Improvements	510,910,043	522,816,869
Land Improvements	14,660,400	10,371,969
Equipment	13,364,480	9,571,854
<b>Total</b>	<b>\$ 579,441,720</b>	<b>\$ 576,125,423</b>

**CHEROKEE COUNTY SCHOOL DISTRICT**

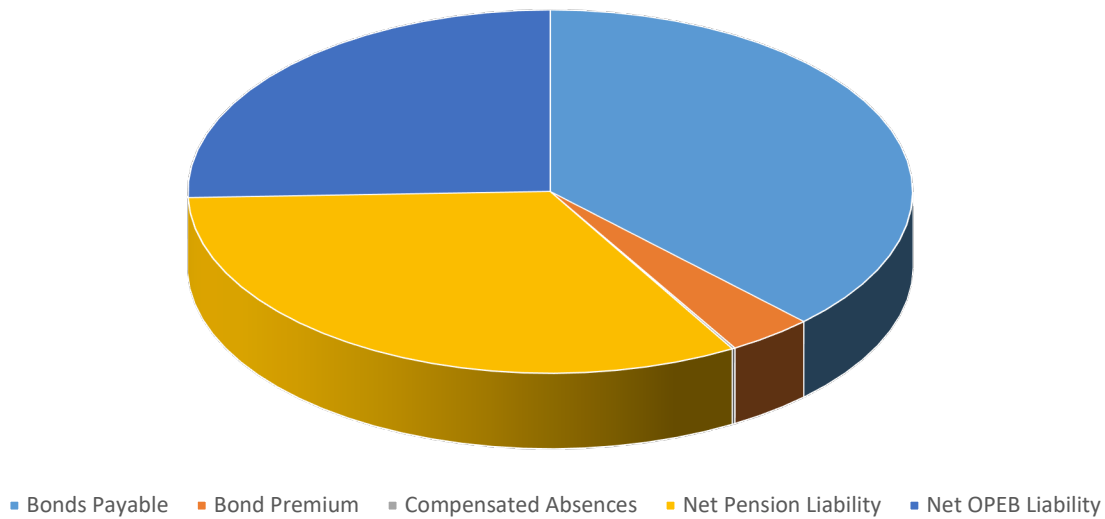
Management's Discussion and Analysis

For the Year ended June 30, 2019

**Long-Term Obligations**

As of June 30, 2019, the School District had \$413.1 million in general obligation and qualified school construction bonds outstanding with \$16.1 million due within one year. On November 8, 2016, the citizens of Cherokee County approved a referendum to collect a one cent Education Special Purpose Local Option Sales Tax (Ed SPLOST) for five years beginning January 1, 2018 and ending December 31, 2022. The bonds will be repaid from sales tax proceeds of this continuing Ed SPLOST and from ½ mill of ad valorem property tax.

FY 19 Long-term Liabilities



The table below summarizes and compares the School District's liabilities for 2019 and 2018.

**Long-term Liabilities at June 30**

	<b>Governmental Activities</b>	
	<b>Fiscal Year 2019</b>	<b>Fiscal Year 2018</b>
Bonds Payable	\$ 413,085,000	\$ 422,505,000
Bond Premium	41,788,073	48,598,225
Compensated Absences	1,537,230	1,545,657
Net Pension Liability	359,724,288	356,740,189
Net OPEB Liability	279,928,576	306,413,183
<b>Total</b>	<b>\$ 1,096,063,167</b>	<b>\$ 1,135,802,254</b>

At June 30, 2019, the School District's assigned long-term bond ratings were Aa2 Stable and AA Stable as determined by Moody's Investor Services, Inc. and Standard and Poor's Rating Services, respectively.

Additional information on the School District's capital assets and long-term obligations can be found in Note 5 and Note 7, respectively, on pages 36 through 39 of this report.

## **CHEROKEE COUNTY SCHOOL DISTRICT**

Management's Discussion and Analysis

For the Year ended June 30, 2019

### **Factors Affecting the School District's Future**

The fiscal year 2020 budget was presented to the public and tentatively adopted by the Board of Education on May 16, 2019 with the final adoption on June 20, 2019. The budget represents an investment plan for the School District, its students, employees, and the communities as a whole. The budget is tied directly to the strategic vision and direction of the Board of Education. The budget for the General Fund for fiscal year 2020 is \$481.2 million, representing an increase of 5.9% from the fiscal year 2019 General Fund budget. This increase allows several budgetary enhancements including filling 30 new teacher positions.

The fiscal year 2020 millage rate is 19.45 mills, with 18.45 mills to support the School District's operating budget (Maintenance and Operations) and 1.0 mills for bond debt service. This rate shifts 0.5 mills from the fiscal year 2019 millage rate of 18.95 mills operating budget to bond debt service. Doing so allows the School District to utilize funds provided by the 2016 Education Special Purpose Local Option Sales Tax for Education to fund current needs as it relates to technology, repairs/maintenance and other voter-approved capital outlay projects.

Positively impacting revenue estimates is projected growth in the local property tax digest. The value of the ad valorem tax digest increased by 9.5% in fiscal year 2018 and 6.1% in fiscal year 2019. The tax digest is projected to increase by 4.1% in fiscal year 2020. This indicates that existing property values have stabilized, and new construction is being added to the digest.

The School District plans capital improvements as future capital needs arise due to increased student population, facility repair, and maintenance needs. Specific capital expenditure plans are formalized in conjunction with individual general obligation bond issues, collections from Education Special Purpose Local Options Sales Tax (Ed SPLOST), and anticipated annual receipts of capital outlay funds from the State of Georgia Department of Education. The School District regularly monitors anticipated capital outlay needs.

### **Contacting the School District's Office of Financial Management**

This financial report is designed to provide a general overview of the Cherokee County School District's finances. Questions concerning any of the information provided in this report or requests for additional financial information should be addressed to the Office of Financial Management, Cherokee County School District, P.O. Box 769, Canton, Georgia, 30169.

# Basic Financial Statements

---



Cherokee County  
School District

# CHEROKEE COUNTY SCHOOL DISTRICT

## Statement of Net Position

June 30, 2019

	<b>Governmental Activities</b>
<b>Assets</b>	
Cash and Cash Equivalents	\$ 133,834,277
Investments	18,083,359
Receivables	
Taxes	8,695,459
State Government	31,178,171
Federal Government	4,360,916
Interest	332,333
Other	1,658,476
Inventory	644,424
Capital Assets, Nondepreciable	40,506,797
Capital Assets, Net	<u>538,934,923</u>
Total Assets	<u>778,229,135</u>
<b>Deferred Outflow of Resources</b>	
Related to Defined Pension Plans (Contributions)	83,750,605
Related to Other Post-Employment Benefits (OPEB Contributions)	20,064,839
Deferred Charges	<u>3,760,353</u>
Total Deferred Outflows of Resources	<u>107,575,797</u>
 Total Assets and Deferred Outflows of Resources	 <u>885,804,932</u>
<b>Liabilities</b>	
Accounts Payable	3,190,000
Salaries and Benefits Payable	38,150,464
Interest Payable	8,799,529
Other Current Liabilities	1,518,193
Long-term Liabilities	
Due Within One Year	23,703,590
Due in More Than One Year	432,706,713
Net Pension Liability	359,724,288
Net Other Post-Employment Benefits (OPEB)	<u>279,928,576</u>
Total Liabilities	<u>1,147,721,353</u>
<b>Deferred Inflows of Resources</b>	
Related to Defined Benefit Pension Plan	11,537,534
Related to Other Post-Employment Benefits	<u>53,788,520</u>
Total Deferred Inflows of Resources	<u>65,326,054</u>
 Total Liabilities and Deferred Inflows of Resources	 <u>1,213,047,407</u>
<b>Net Position</b>	
Net Investment In Capital Assets	114,343,646
Restricted For:	
Capital Projects	14,263,183
Debt Service	72,874,864
Unrestricted	<u>(528,724,168)</u>
Total Net Position	<u>\$ (327,242,475)</u>

The accompanying notes are an integral part of this financial statement.

**CHEROKEE COUNTY SCHOOL DISTRICT**

Statement of Activities

For the Fiscal Year Ended June 30, 2019

Functions/Programs	Expenses	Program Revenues			Net (Expense) Revenue and Changes in Net Position
		Charges for Services	Operating Grants and Contributions	Capital Grants and Contributions	
Governmental Activities :					
Instructional Services	\$ 299,191,977	\$ 13,543,252	\$ 190,923,772	\$ 2,388,327	\$ (92,336,626)
Support Services					
Pupil Services	19,698,979	-	5,097,536	-	(14,601,443)
Improvement of Instructional Services	14,989,865	-	2,943,983	-	(12,045,882)
Educational Media Services	4,591,369	-	4,618,494	-	27,125
General Administration	4,716,707	-	4,478,197	117,184	(121,326)
School Administration	24,991,511	-	7,983,108	53,453	(16,954,950)
Support Services - Business	3,070,305	-	21,593	4,666	(3,044,046)
Maintenance and Operation	26,885,475	253,023	10,653,669	41,455	(15,937,328)
Student Transportation Services	28,050,941	-	3,068,448	630,941	(24,351,552)
Support Services - Central	4,844,465	-	47,973	-	(4,796,492)
Other Support Services	-	-	-	-	-
Operations of Noninstructional Services					
Community Services	2,003,057	-	40	-	(2,003,017)
School Nutrition	16,652,579	7,449,816	10,651,630	5,758	1,454,625
Interest on Long-term Debt	16,557,350	-	1,276,848	4,199,222	(11,081,280)
Total Governmental Activities	<u>\$ 466,244,580</u>	<u>\$ 21,246,091</u>	<u>\$ 241,765,291</u>	<u>\$ 7,441,006</u>	<u>\$ (195,792,192)</u>
General Revenues:					
Taxes:					
Property Tax, Levied for General Purposes				\$ 169,863,066	
Property Tax, Levied for Debt Service				4,504,024	
Educational Local Option Sales Tax				42,354,080	
Other Tax				6,348,184	
Miscellaneous				1,785,756	
Unrestricted Investment Earnings				1,132,482	
Total General Revenues				<u>225,987,592</u>	
Change in Net Position				30,195,400	
Net Position - Beginning of Year				<u>(357,437,875)</u>	
Net Position - End of Year				<u>\$ (327,242,475)</u>	

The accompanying notes are an integral part of these financial statements.



**CHEROKEE COUNTY SCHOOL DISTRICT**

Balance Sheet  
Governmental Funds  
June 30, 2019

	<u>General Fund</u>	<u>District-Wide Capital Projects</u>	<u>Debt Service</u>	<u>Total Governmental Funds</u>
<b>Assets</b>				
Cash and Cash Equivalents	\$ 68,803,326	\$ 15,473,679	\$ 49,557,272	\$ 133,834,277
Investments	65,316	-	18,018,043	18,083,359
Receivables				
Taxes	4,965,170	-	3,730,289	8,695,459
State Government	31,178,171	-	-	31,178,171
Federal Government	4,360,916	-	-	4,360,916
Interest	-	-	332,333	332,333
Other	421,549	-	1,236,927	1,658,476
Inventories	644,424	-	-	644,424
Total Assets	<u>\$ 110,438,872</u>	<u>\$ 15,473,679</u>	<u>\$ 72,874,864</u>	<u>\$ 198,787,415</u>
<b>Liabilities and Fund Balance</b>				
<b>Liabilities</b>				
Accounts Payable	\$ 3,036,874	\$ 153,126	\$ -	\$ 3,190,000
Salaries and Benefits Payable	38,150,464	-	-	38,150,464
Intergovernmental Payable	-	-	-	-
Contracts Payable	-	331,687	-	331,687
Retainage Payable	-	725,683	-	725,683
Total Liabilities	<u>41,187,338</u>	<u>1,210,496</u>	<u>-</u>	<u>42,397,834</u>
<b>Deferred Inflows of Resources</b>				
Deferred Revenue	<u>1,696,225</u>	<u>-</u>	<u>39,331</u>	<u>1,735,556</u>
Total Deferred Inflows of Resources	<u>1,696,225</u>	<u>-</u>	<u>39,331</u>	<u>1,735,556</u>
<b>Fund Balances</b>				
Nonspendable				
Inventory	644,424	-	-	644,424
Restricted				
Debt Service	-	-	72,835,533	72,835,533
Capital Projects	-	14,263,183	-	14,263,183
Committed				
School Food Services	6,765,373	-	-	6,765,373
School Activities	5,372,084	-	-	5,372,084
Unassigned	<u>54,773,428</u>	<u>-</u>	<u>-</u>	<u>54,773,428</u>
Total Fund Balances	<u>67,555,309</u>	<u>14,263,183</u>	<u>72,835,533</u>	<u>154,654,025</u>
Total Liabilities, Deferred Inflows of Resources, and Fund Balances	<u>\$ 110,438,872</u>	<u>\$ 15,473,679</u>	<u>\$ 72,874,864</u>	<u>\$ 198,787,415</u>

The accompanying notes are an integral part of this financial statement.

**CHEROKEE COUNTY SCHOOL DISTRICT**  
**Reconciliation of the Governmental Funds**  
**Balance Sheet to the Statement of Net Position**  
**June 30, 2019**

---

Total Fund Balances Governmental Funds \$ 154,654,025

Amounts reported for governmental activities in the Statement of Net Position are different because:

Capital assets used in governmental activities are not financial resources and, therefore, are not reported in the funds.

	Cost	845,451,704	
	Less Accumulated Depreciation	<u>(266,009,984)</u>	579,441,720

Some liabilities are not due and payable in the current period and, therefore, are not reported in the funds.

	Claims Payable	(460,823)	
	Interest Payable	<u>(8,799,529)</u>	(9,260,352)

Taxes that are not available to pay for current period expenditures are deferred in the governmental funds.

	Property Taxes		1,735,556
--	----------------	--	-----------

Deferred charges or credits on debt refundings are applicable to future periods and are therefore not reported in the funds and are amortized over the life of the new debt.

	Loss on Bond Refundings		3,760,353
--	-------------------------	--	-----------

Deferred Outflows and Inflows of Resources and the net pension liability related to the District's pension plan are applicable to future periods and, therefore, are not reported in the governmental funds.

	Net Pension Liability	(359,724,288)	
	Deferred Outflows of Resources - Pension Related Items	83,750,605	
	Deferred Inflows of Resources - Pension Related Items	<u>(11,537,534)</u>	(287,511,217)

Deferred Outflows and Inflows of Resources and the net OPEB liability related to the District's pension plan are applicable to future periods and, therefore, are not reported in the governmental funds.

	Net Other Post-Employment Benefits Liability	(279,928,576)	
	Deferred Outflows of Resources - OPEB Related Items	20,064,839	
	Deferred Inflows of Resources - OPEB Related Items	<u>(53,788,520)</u>	(313,652,257)

Long-term liabilities are not due and payable in the current period and, therefore, are not reported in the funds.

	Bonds Payable	(413,085,000)	
	Bond Premium, Net of Amortization	(41,788,073)	
	Compensated Absences	<u>(1,537,230)</u>	<u>(456,410,303)</u>

Net Position Of Governmental Activities \$ (327,242,475)

The accompanying notes are an integral part of this financial statement.

**CHEROKEE COUNTY SCHOOL DISTRICT**  
**Statement of Revenues, Expenditures, and Changes in Fund Balance**  
**Governmental Funds**  
**For the Year Ended June 30, 2019**

	<u>General Fund</u>	<u>District-Wide Capital Projects</u>	<u>Debt Service</u>	<u>Total Governmental Funds</u>
<b>Revenues</b>				
Local Sources	\$ 198,807,171	\$ 483,592	\$ 46,858,104	\$ 246,148,867
State Funds	216,141,964	2,070,168	-	218,212,132
Federal Funds	23,857,002	-	-	23,857,002
Investment Earnings	1,132,482	708,295	1,276,848	3,117,625
Miscellaneous	914,724	-	4,199,222	5,113,946
Total Revenues	<u>440,853,343</u>	<u>3,262,055</u>	<u>52,334,174</u>	<u>496,449,572</u>
<b>Expenditures</b>				
<b>Current</b>				
Instructional Services	286,615,881	4,193,535	-	290,809,416
Support Services:				
Pupil Services	20,221,099	-	-	20,221,099
Improvement of Instructional Services	15,341,099	-	-	15,341,099
Educational Media Services	4,718,229	-	-	4,718,229
General Administration	3,978,982	-	-	3,978,982
School Administration	25,338,378	-	-	25,338,378
Support Services - Business	3,100,280	-	-	3,100,280
Maintenance and Operation	26,735,820	-	-	26,735,820
Student Transportation Services	24,233,655	2,607,635	-	26,841,290
Support Services - Central	4,907,557	-	-	4,907,557
Other Support Services	-	-	-	-
Community Services	2,003,057	-	-	2,003,057
School Nutrition	16,587,199	-	-	16,587,199
Capital Outlay	340,061	21,789,396	-	22,129,457
Debt Services				
Principal Retirement	-	-	9,420,000	9,420,000
Interest and Fees	60,247	-	20,820,155	20,880,402
Total Expenditures	<u>434,181,544</u>	<u>28,590,566</u>	<u>30,240,155</u>	<u>493,012,265</u>
Excess (Deficiency) of Revenues Over (Under) Expenditures	<u>6,671,799</u>	<u>(25,328,511)</u>	<u>22,094,019</u>	<u>3,437,307</u>
<b>Other Financing Sources (Uses)</b>				
Proceeds from Sale of Capital Assets	70,300	-	-	70,300
Transfers In	-	-	-	-
Transfers Out	-	-	-	-
Total Other Financing Sources (Uses)	<u>70,300</u>	<u>-</u>	<u>-</u>	<u>70,300</u>
Net Change in Fund Balances	6,742,099	(25,328,511)	22,094,019	3,507,607
<b>Fund Balances - Beginning</b>	<u>60,813,210</u>	<u>39,591,694</u>	<u>50,741,514</u>	<u>151,146,418</u>
Fund Balances - Ending	<u>\$ 67,555,309</u>	<u>\$ 14,263,183</u>	<u>\$ 72,835,533</u>	<u>\$ 154,654,025</u>

The accompanying notes are an integral part of this financial statement.

**CHEROKEE COUNTY SCHOOL DISTRICT**  
**Reconciliation of the Statement of Revenues, Expenditures, and Changes**  
**in Fund Balances to the Statement of Activities**  
**For the Year Ended June 30, 2019**

Net Change in Fund Balances - Total Governmental Funds \$ 3,507,607

Governmental funds report capital outlays as expenditures. However, in the statement of activities the cost of those assets is allocated over their estimated useful lives and reported as depreciation expense. The amount by which capital outlays exceeded depreciation expense is as follows:

Capital Outlay	22,129,457	
Depreciation Expense	<u>(18,731,493)</u>	3,397,964

The net effect of various miscellaneous transactions involving capital assets during the fiscal year decreased net position. (81,667)

Revenues in the statement of activities that do not provide current financial resources are not reported as revenues in the funds.

Property Taxes	(70,418)
----------------	----------

District pension contributions are reported as expenditures in the governmental funds when made. However, they are reported as deferred outflows of resources in the Statement of Net Position because the reported net pension/OPEB liability is measured a year before the District's report date. Pension/OPEB expense, which is the change in the net pension/OPEB liability adjusted for changes in deferred outflows and inflows of resources related to pensions/OPEB, is reported in the Statement of Activities.

Pension expense	11,065,006
OPEB expense	(1,393,454)

The issuance of long-term debt provides current financial resources to governmental funds, while the repayment of the principal of long-term debt consumes the current financial resources of governmental funds. Neither transaction, however, has any effect on net position. This amount is the net effect of these differences in the treatment of long-term debt and related items.

Principal Payments - Bonds	9,420,000
----------------------------	-----------

Some expenses reported in the statement of activities do not require the use of current financial resources and, therefore, are not reported as expenditures in the governmental funds.

Amortization of Bond Premium	6,810,152	
Amortization of Deferred Charge on Refunding	(2,193,379)	
Change in Claims Payable	18,883	
Change in Compensated Absences	8,427	
Change in Accrued Interest	<u>(293,721)</u>	<u>4,350,362</u>

Change in Net Position of Governmental Activities \$ 30,195,400

**CHEROKEE COUNTY SCHOOL DISTRICT**

General Fund

Statement of Revenues, Expenditures, and Changes in Fund Balance - Budget to Actual  
For the Fiscal Year Ended June 30, 2019

	<u>Original Budget</u>	<u>Final Budget</u>	<u>Actual</u>	<u>Variance With Final Budget</u>
<b>Revenues</b>				
Local Sources	\$ 196,605,253	\$ 196,605,253	\$ 198,807,171	\$ 2,201,918
State Funds	218,318,211	219,037,411	216,141,964	(2,895,447)
Federal Funds	23,860,840	26,441,504	23,857,002	(2,584,502)
Investment Earnings	-	-	1,132,482	1,132,482
Miscellaneous	-	-	914,724	914,724
<b>Total Revenues</b>	<u>438,784,304</u>	<u>442,084,168</u>	<u>440,853,343</u>	<u>(1,230,825)</u>
<b>Expenditures</b>				
Instructional Services	283,384,037	280,147,815	286,615,881	(6,468,066)
Support Services				
Pupil Services	18,392,239	20,352,704	20,221,099	131,605
Improvement of Instructional Services	14,995,902	16,245,921	15,341,099	904,822
Educational Media Services	4,924,608	4,778,506	4,718,229	60,277
General Administration	3,881,814	4,237,460	3,978,982	258,478
School Administration	24,715,279	25,305,279	25,338,378	(33,099)
Support Services - Business	3,054,565	3,254,565	3,100,280	154,285
Maintenance and Operation	28,503,735	28,503,735	26,735,820	1,767,915
Student Transportation Services	21,736,159	23,774,323	24,233,655	(459,332)
Support Services - Central	5,183,799	5,384,421	4,907,557	476,864
Other Support Services	-	-	-	-
Community Services	-	-	2,003,057	(2,003,057)
School Nutrition	17,267,536	17,277,381	16,587,199	690,182
Capital Outlay	475,000	475,000	340,061	134,939
Debt Service				
Principal Retirement	-	-	-	-
Interest and Fees	11,532,623	11,532,623	60,247	11,472,376
<b>Total Expenditures</b>	<u>438,047,296</u>	<u>441,269,733</u>	<u>434,181,544</u>	<u>7,088,189</u>
Excess (Deficiency) of Revenues over (under) Expenditures	<u>737,008</u>	<u>814,435</u>	<u>6,671,799</u>	<u>5,857,364</u>
<b>Other Financing Sources</b>				
Proceeds from Sale of Capital Assets	-	-	70,300	70,300
Transfers Out	-	-	-	-
<b>Total Other Financing Sources (Uses)</b>	<u>-</u>	<u>-</u>	<u>70,300</u>	<u>70,300</u>
Net Change in Fund Balances	737,008	814,435	6,742,099	5,927,664
<b>Fund Balances - Beginning</b>	<u>60,813,210</u>	<u>60,813,210</u>	<u>60,813,210</u>	<u>-</u>
<b>Fund Balances - Ending</b>	<u>\$ 61,550,218</u>	<u>\$ 61,627,645</u>	<u>\$ 67,555,309</u>	<u>\$ 5,927,664</u>

The accompanying notes are an integral part of this financial statement.

**CHEROKEE COUNTY SCHOOL DISTRICT**  
 District-Wide Capital Projects  
 Statement of Revenues, Expenditures, and Changes in Fund Balance - Budget to Actual  
 For the Fiscal Year Ended June 30, 2019

	<u>Original Budget</u>	<u>Final Budget</u>	<u>Actual</u>	<u>Variance With Final Budget</u>
<b>Revenues</b>				
Local Sources	\$ 467,385	\$ 467,385	\$ 483,592	\$ 16,207
State Funds	877,500	1,188,411	2,070,168	881,757
Federal Funds	-	-	-	-
Investment Earnings	-	-	708,295	708,295
Miscellaneous	-	-	-	-
Total Revenues	<u>1,344,885</u>	<u>1,655,796</u>	<u>3,262,055</u>	<u>1,606,259</u>
<b>Expenditures</b>				
Instructional Services	4,500,000	4,500,000	4,193,535	306,465
Support Services				
Pupil Services	-	-	-	-
Improvement of Instructional Services	-	-	-	-
Educational Media Services	-	-	-	-
General Administration	-	-	-	-
School Administration	-	-	-	-
Support Services - Business	-	-	-	-
Maintenance and Operation	-	-	-	-
Student Transportation Services	2,700,000	2,700,000	2,607,635	92,365
Support Services - Central	-	-	-	-
Other Support Services	-	-	-	-
Community Services	-	-	-	-
School Nutrition	-	-	-	-
Capital Outlay	20,873,600	21,184,511	21,789,396	(604,885)
Debt Service				
Principal Retirement	-	-	-	-
Interest and Fees	-	-	-	-
Total Expenditures	<u>28,073,600</u>	<u>28,384,511</u>	<u>28,590,566</u>	<u>(206,055)</u>
Excess (Deficiency) of Revenues over (under) Expenditures	<u>(26,728,715)</u>	<u>(26,728,715)</u>	<u>(25,328,511)</u>	<u>1,400,204</u>
<b>Other Financing Sources</b>				
Proceeds from Sale of Capital Assets	-	-	-	-
Transfers Out	-	-	-	-
Total Other Financing Sources (Uses)	<u>-</u>	<u>-</u>	<u>-</u>	<u>-</u>
Net Change in Fund Balances	(26,728,715)	(26,728,715)	(25,328,511)	1,400,204
<b>Fund Balances - Beginning</b>	<u>39,591,694</u>	<u>39,591,694</u>	<u>39,591,694</u>	<u>-</u>
<b>Fund Balances - Ending</b>	<u>\$ 12,862,979</u>	<u>\$ 12,862,979</u>	<u>\$ 14,263,183</u>	<u>\$ 1,400,204</u>

The accompanying notes are an integral part of this financial statement.

**CHEROKEE COUNTY SCHOOL DISTRICT**

Debt Service

Statement of Revenues, Expenditures, and Changes in Fund Balance - Budget to Actual  
For the Fiscal Year Ended June 30, 2019

	<u>Original Budget</u>	<u>Final Budget</u>	<u>Actual</u>	<u>Variance With Final Budget</u>
<b>Revenues</b>				
Local Sources	\$ 37,937,283	\$ 37,937,283	\$ 46,858,104	\$ 8,920,821
State Funds	-	-	-	-
Federal Funds	2,936,977	2,936,977	-	(2,936,977)
Investment Earnings	699,551	699,551	1,276,848	577,297
Miscellaneous	-	-	4,199,222	4,199,222
<b>Total Revenues</b>	<u>41,573,811</u>	<u>41,573,811</u>	<u>52,334,174</u>	<u>10,760,363</u>
<b>Expenditures</b>				
Instructional Services	-	-	-	-
Support Services				
Pupil Services	-	-	-	-
Improvement of Instructional Services	-	-	-	-
Educational Media Services	-	-	-	-
General Administration	-	-	-	-
School Administration	-	-	-	-
Support Services - Business	-	-	-	-
Maintenance and Operation	-	-	-	-
Student Transportation Services	-	-	-	-
Support Services - Central	-	-	-	-
Other Support Services	-	-	-	-
Community Services	-	-	-	-
School Nutrition	-	-	-	-
Capital Outlay	-	-	-	-
Debt Service				
Principal Retirement	9,420,000	9,420,000	9,420,000	-
Interest and Fees	19,415,094	19,415,094	20,820,155	(1,405,061)
<b>Total Expenditures</b>	<u>28,835,094</u>	<u>28,835,094</u>	<u>30,240,155</u>	<u>(1,405,061)</u>
Excess (Deficiency) of Revenues over (under) Expenditures	<u>12,738,717</u>	<u>12,738,717</u>	<u>22,094,019</u>	<u>9,355,302</u>
<b>Other Financing Sources</b>				
Proceeds from Sale of Capital Assets	-	-	-	-
Transfers Out	-	-	-	-
<b>Total Other Financing Sources (Uses)</b>	<u>-</u>	<u>-</u>	<u>-</u>	<u>-</u>
Net Change in Fund Balances	12,738,717	12,738,717	22,094,019	9,355,302
<b>Fund Balances - Beginning</b>	<u>50,741,514</u>	<u>50,741,514</u>	<u>50,741,514</u>	<u>-</u>
<b>Fund Balances - Ending</b>	<u>\$ 63,480,231</u>	<u>\$ 63,480,231</u>	<u>\$ 72,835,533</u>	<u>\$ 9,355,302</u>

The accompanying notes are an integral part of this financial statement.

**CHEROKEE COUNTY SCHOOL DISTRICT**  
Statement of Fiduciary Assets and Liabilities  
Agency Funds  
June 30, 2019

---

---

	<u>Agency Fund</u>
<b>Assets</b>	
Cash and Cash Equivalents	\$ <u>543,621</u>
Total Assets	\$ <u><u>543,621</u></u>
<b>Liabilities</b>	
Due To Others	\$ <u>543,621</u>
Total Liabilities	\$ <u><u>543,621</u></u>

The accompanying notes are an integral part of this financial statement.



# CHEROKEE COUNTY SCHOOL DISTRICT

## Notes to the Basic Financial Statements

June 30, 2019

### **Note 1: DESCRIPTION OF SCHOOL DISTRICT AND REPORTING ENTITY**

#### **REPORTING ENTITY**

The Cherokee County School District (School District) was established under the laws of the State of Georgia and operates under the guidance of a board elected by the voters and a Superintendent appointed by the Board. The School District is organized as a separate legal entity and has the power to levy taxes and issue bonds. Its budget is not subject to approval by any other entity. Accordingly, the School District is a primary government and consists of all the organizations that compose its legal entity.

### **Note 2: SUMMARY OF SIGNIFICANT ACCOUNTING POLICIES**

The accompanying financial statements of the School District have been prepared in conformity with generally accepted accounting principles (GAAP) as prescribed by the Governmental Accounting Standards Board (GASB). GASB is the accepted standard-setting body for governmental accounting and financial reporting principles. The most significant of the School District's accounting policies are described below.

#### **BASIS OF PRESENTATION**

The School District's basic financial statements are collectively comprised of the government-wide financial statements, fund financial statements and notes to the basic financial statements. The government-wide statements focus on the School District as a whole, while the fund financial statements focus on major funds. Each presentation provides valuable information that can be analyzed and compared between years and between governments to enhance the information's usefulness.

#### **Government-wide Statements:**

The Statement of Net Position and the Statement of Activities display information about the financial activities of the overall School District, except for fiduciary activities. Eliminations have been made to minimize the double counting of internal activities. Governmental activities generally are financed through taxes, intergovernmental revenues, and other nonexchange transactions.

The Statement of Net Position presents the School District's non-fiduciary assets and liabilities, with the difference reported as net position. Net position is reported in three categories as follows:

1. **Net investment in capital assets** consists of the School District's total investment in capital assets, net of accumulated depreciation, and reduced by outstanding debt obligations related to those capital assets. To the extent debt has been incurred but not yet expended for capital assets, such amounts are not included as a component of net investment in capital assets.
2. **Restricted net position** consists of resources for which the School District is legally or contractually obligated to spend in accordance with restrictions imposed by external third parties or imposed by law through constitutional provisions or enabling legislation.
3. **Unrestricted net position** consists of resources not meeting the definition of the two preceding categories. Unrestricted net position often has constraints on resources imposed by management which can be removed or modified.

## CHEROKEE COUNTY SCHOOL DISTRICT

### Notes to the Basic Financial Statements

June 30, 2019

The Statement of Activities presents a comparison between direct expenses and program revenues for each function of the School District's governmental activities.

Direct expenses are those that are specifically associated with a program or function and, therefore, are clearly identifiable to a particular function. Indirect expenses (expenses of the School District related to the administration and support of the School District's programs, such as office and maintenance personnel and accounting) are not allocated to programs.

Program revenues include (a) charges paid by the recipients of goods or services offered by the programs and (b) grants and contributions that are restricted to meeting the operational or capital requirements of a particular program. Revenues that are not classified as program revenues, including all taxes, are presented as general revenues.

#### ***Fund Financial Statements:***

The fund financial statements provide information about the School District's funds, including fiduciary funds. Eliminations have been made to minimize the double counting of internal activities. Separate financial statements are presented for governmental and fiduciary funds. The emphasis of fund financial statements is on major governmental funds, each displayed in a separate column.

The School District reports the following major governmental funds:

- The general fund is the School District's primary operating fund. It accounts for and reports all financial resources not accounted for and reported in another fund.
- The capital projects fund accounts for and reports financial resources including Education Special Purpose Local Option Sales Tax (ESPLOST), Bond Proceeds and grants from Georgia State Financing and Investment Commission that are restricted, committed or assigned for capital outlay expenditures, including the acquisition or construction of capital facilities and other capital assets.
- The debt service fund accounts for and reports financial resources that are restricted, committed, or assigned including taxes (property and sales) legally restricted for the payment of general long-term principal and interest.

The School District reports the following fiduciary fund type:

- Agency funds are used to report resources held by the School District in a purely custodial capacity (assets equal liabilities) and do not involve measurement of results of operations.

#### **BASIS OF ACCOUNTING**

The basis of accounting determines when transactions are reported on the financial statements. The government-wide and fiduciary fund financial statements are reported using the economic resources measurement focus and the accrual basis of accounting. Revenues are recorded when earned and expenses are recorded at the time liabilities are incurred, regardless of when the related cash flows take place. Nonexchange transactions, in which the School District gives (or receives) value without directly receiving (or giving) equal value in exchange, include property taxes, sales taxes and grants. On an accrual basis, revenue from property taxes is recognized in the fiscal year for which the taxes are levied. Revenue from sales taxes is recognized in the fiscal

## CHEROKEE COUNTY SCHOOL DISTRICT

### Notes to the Basic Financial Statements

June 30, 2019

year in which the underlying transaction (sale) takes place. Revenue from grants is recognized in the fiscal year in which all eligibility requirements have been satisfied.

The School District uses funds to report on its financial position and the results of its operations. Fund accounting is designed to demonstrate legal compliance and to aid financial management by segregating transactions related to certain governmental functions or activities. A fund is a separate accounting entity with a self-balancing set of accounts.

Governmental funds are reported using the current financial resources measurement focus and the modified accrual basis of accounting. Under this method, revenues are recognized when measurable and available. The School District considers all revenues reported in the governmental funds to be available if they are collected within sixty days after year-end. The School District considers all intergovernmental revenues to be available if they are collected within six months after year-end. Property taxes, sales taxes and interest are considered to be susceptible to accrual. Expenditures are recorded when the related fund liability is incurred, except for principal and interest on long-term debt, claims and judgments, and compensated absences, which are recognized as expenditures to the extent they have matured. Capital asset acquisitions are reported as expenditures in governmental funds. Proceeds of general long-term liabilities are reported as other financing sources.

The School District funds certain programs by a combination of specific cost-reimbursement grants, categorical grants, and general revenues. Thus, when program costs are incurred, there are both restricted and unrestricted net assets available to finance the program. It is the School District's policy to first apply grant resources to such programs, followed by cost-reimbursement grants, then general revenues.

#### NEW ACCOUNTING PRONOUNCEMENTS

In fiscal year 2019, the School District adopted Governmental Accounting Standards Board (GASB) Statement No. 83, *Certain Asset Retirement Obligations*. This statement addresses accounting and financial reporting for certain asset retirement obligations (AROs). An ARO is a legally enforceable liability associated with the retirement of a tangible capital asset. A government that has legal obligations to perform future asset retirement activities related to its tangible capital assets should recognize a liability based on the guidance in this statement. The adoption of this statement does not have a significant impact on the School District's financial statement.

In fiscal year 2019, the School District adopted Governmental Accounting Standards Board (GASB) Statement No. 88, *Certain Disclosures Related to Debt, including Direct Borrowings and Direct Placements*. The primary objective of this statement is to improve the information that is disclosed in notes to government financial statements related to debt, including direct borrowings and direct placements. It also clarifies which liabilities governments should include when disclosing information related to debt. The adoption of this statement does not have a significant impact on the School District's financial statement.

#### CASH AND CASH EQUIVALENTS

Cash and cash equivalents consist of cash on hand, demand deposits, investments in the State of Georgia local government investment pool (Georgia Fund 1) and short-term investments with original maturities of three months or less from the date of acquisition in authorized financial

## CHEROKEE COUNTY SCHOOL DISTRICT

### Notes to the Basic Financial Statements

June 30, 2019

institutions. Official Code of Georgia Annotated (O.C.G.A.) §45-8-14 authorizes the School District to deposit its funds in one or more solvent banks, insured Federal savings and loan associations or insured chartered building and loan associations.

#### INVESTMENTS

The School District can invest its funds as permitted by O.C.G.A. §36-83-4. In selecting among options for investment or among institutional bids for deposits, the highest rate of return shall be the objective, given equivalent conditions of safety and liquidity.

Investments made by the School District in nonparticipating interest-earning contracts (such as certificates of deposit) and repurchase agreements are reported at cost. Participating interest-earning contracts and money market investments with a maturity at purchase of one year or less are reported at amortized cost. All other investments are reported at fair value.

For accounting purposes, certificates of deposit are classified as investments if they have an original maturity greater than three months when acquired.

#### RECEIVABLES

Receivables consist of amounts due from property and sales taxes, grant reimbursements due on Federal, State or other grants for expenditures made but not reimbursed and other receivables disclosed from information available. Receivables are recorded when either the asset or revenue recognition criteria has been met. Receivables recorded on the basic financial statements do not include any amounts which would necessitate the need for an allowance for uncollectible receivables.

Due to other funds and due from other funds consist of activities between funds that are representative of lending/borrowing arrangements outstanding at the end of the fiscal year.

#### INVENTORIES

Food Inventories: On the basic financial statements, inventories of donated food commodities used in the preparation of meals are reported at their Federally assigned value and purchased foods inventories are reported at cost (calculated on the first-in first-out (FIFO) basis). The School District uses the consumption method to account for inventories whereby donated food commodities are recorded as an asset and as revenue when received, and expenses/expenditures are recorded as the inventory items are used. Purchased foods are recorded as an asset when purchased and expenses/expenditures are recorded as the inventory items are used.

Supplies/Equipment Inventories: On the basic financial statements, inventories of stored supplies and equipment are reported at cost using the first-in, first-out method. The School District uses the consumption method to account for the inventories whereby items are recorded as an asset when purchased and expenses are recorded when the item is put into use.

#### PREPAID ITEMS

Payments made to vendors for services that will benefit future accounting periods are recorded as prepaid items, in both the government-wide and governmental fund financial statements.

**CHEROKEE COUNTY SCHOOL DISTRICT**

Notes to the Basic Financial Statements

June 30, 2019

**CAPITAL ASSETS**

On the government-wide financial statements, capital assets are recorded at cost where historical records are available and at estimated historical cost based on appraisals or deflated current replacement cost where no historical records exist. Donated capital assets are recorded at the acquisition value on the date donated. The cost of normal maintenance and repairs that do not add to the value of assets or materially extend the useful lives of the assets is not capitalized. The School District does not capitalize book collections or works of art.

Capital acquisition and construction are recorded as expenditures in the governmental fund financial statements at the time of purchase (including ancillary charges), and the related assets are reported as capital assets in the governmental activities' column in the government-wide financial statements.

Depreciation is computed using the straight-line for all assets, except land, and is used to allocate the actual or estimated historical cost of capital assets over estimated useful lives.

Capitalization thresholds and estimated useful lives of capital assets reported in the government-wide statements are as follows:

<u>Description</u>	<u>Capitalization Policy</u>	<u>Estimated Useful Life</u>
Land	Any Amount	N/A
Land Improvements	\$10,000	20 Years
Buildings	\$10,000	20-50 Years
Equipment	\$10,000	5-10 Years

**DEFERRED OUTFLOWS/INFLOWS OF RESOURCES**

In addition to assets, the statement of financial position will report a separate section for deferred outflows of resources. This separate financial statement element represents a consumption of resources that applies to a future period(s) and therefore will not be recognized as an outflow of resources (expense/expenditure) until then.

In addition to liabilities, the statement of financial position will report a separate section for deferred inflows of resources. This separate financial statement element represents an acquisition of resources that applies to a future period(s) and, therefore, will not be recognized as an inflow of resources (revenue) until that time.

**COMPENSATED ABSENCES**

Compensated absences payable consists of vacation leave employees earned based on services already rendered.

Vacation leave of 12 days is awarded on a fiscal year basis to all full-time personnel employed on a twelve-month basis. No other employees are eligible to earn vacation leave. Vacation leave not utilized during the fiscal year may be carried over to the next fiscal year, providing such vacation leave does not exceed 45 days. Vacation leave of 20 days is awarded on a fiscal year basis to the Superintendent and there are no limits on the amount that may be carried over. Upon

## **CHEROKEE COUNTY SCHOOL DISTRICT**

### Notes to the Basic Financial Statements

June 30, 2019

terminating employment, the School District pays all unused and unforfeited vacation benefits to employees. Accordingly, vacation benefits are accrued as a liability in the government-wide financial statements. A liability for these amounts is reported in the governmental fund financial statements only if they have matured, for example, as a result of employee resignations and retirements by fiscal-year end.

Members of the Teachers Retirement System of Georgia (TRS) may apply unused sick leave toward early retirement. The liability for early retirement will be borne by TRS rather than by the individual School Districts. Otherwise, sick leave does not vest with the employee, and no liability is reported in the School District's financial statements.

#### **LONG-TERM LIABILITIES AND BOND DISCOUNTS/PREMIUMS**

In the School District's government-wide financial statements, outstanding debt is reported as liabilities. Bond premiums and discounts and the difference between the reacquisition price and the net carrying value of refunded debt are deferred and amortized over the life of the bonds using the effective interest method. Bond issuance costs are recognized as an outflow of resources in the fiscal year in which the bonds are issued.

In the governmental fund financial statements, the School District recognizes the proceeds of debt and premiums as other financing sources of the current period. Bond issuance costs are reported as debt service expenditures.

#### **PENSIONS**

For purposes of measuring the net pension liability, deferred outflows of resources and deferred inflows of resources related to pensions, and pension expense, information about the pension plan's fiduciary net position and additions to/deductions from the plan's fiduciary net position have been determined on the same basis as they are reported by the plan. For this purpose, benefit payments (including refunds of employee contributions) are recognized when due and payable in accordance with the benefit terms. Investments are reported at fair value.

#### **POSTEMPLOYMENT BENEFITS OTHER THAN PENSIONS (OPEB)**

For purposes of measuring the net OPEB liability, deferred outflows of resources and deferred inflows of resources related to OPEB, and OPEB expense, information about the fiduciary net position of the Georgia School Employees Postemployment Benefit Fund (School OPEB Fund) and additions to/deductions from School OPEB Fund fiduciary net position have been determined on the same basis as they are reported by School OPEB Fund. For this purpose, benefit payments are recognized when due and payable in accordance with the benefit terms. Investments are reported at fair value.

#### **FUND BALANCES**

Fund balance for governmental funds is reported in classifications that comprise a hierarchy based primarily on the extent to which the government is bound to honor constraints on the specific purposes for which amounts in those funds can be spent.



## CHEROKEE COUNTY SCHOOL DISTRICT

### Notes to the Basic Financial Statements

June 30, 2019

The School District's fund balances are classified as follows:

**Nonspendable** consists of resources that cannot be spent either because they are in a nonspendable form or because they are legally or contractually required to be maintained intact.

**Restricted** consists of resources that can be used only for specific purposes pursuant to constraints either (1) externally imposed by creditors, grantors, contributors, or laws and regulations of other governments or (2) imposed by law through constitutional provisions or enabling legislation.

**Committed** consists of resources that can be used only for specific purposes pursuant to constraints imposed by formal action of the Board. The Board is the School District's highest level of decision-making authority, and the formal action that is required to be taken to establish, modify, or rescind a fund balance commitment is a resolution approved by the Board. Committed fund balance also should incorporate contractual obligations to the extent that existing resources in the fund have been specifically committed for use in satisfying those contractual requirements.

**Assigned** consists of resources constrained by the School District's intent to be used for specific purposes but are neither restricted nor committed. The intent should be expressed by (1) the Board or (2) the budget or finance committee, or the Superintendent, or designee, to assign amounts to be used for specific purposes.

**Unassigned** consists of resources within the general fund not meeting the definition of any aforementioned category. The general fund should be the only fund that reports a positive unassigned fund balance amount. In other governmental funds, it may be necessary to report a negative unassigned fund balance.

When multiple categories of fund balance are available for expenditure, the School District will start with the most restricted category and spend those funds first before moving down to the next category with available funds.

It is the goal of the School District to achieve and maintain a committed, assigned, and unassigned fund balance in the general fund at fiscal year-end of not less than 12% of prior year general fund budgeted expenditures, not to exceed 15% of the total budget of the subsequent fiscal year, in compliance with O.C.G.A. § 20-2-167(a)5. If the unassigned fund balance at fiscal year-end falls below the goal, the School District shall develop a restoration plan to achieve and maintain the minimum fund balance.

### USE OF ESTIMATES

The preparation of the financial statements in conformity with accounting principles generally accepted in the United States requires management to make estimates and assumptions that affect the amounts reported in the financial statements and accompanying notes. Actual results may differ from those estimates.

### PROPERTY TAXES

The Cherokee Board of Commissioners adopted the property tax levy for the 2018 tax digest year (calendar year) on July 19, 2018 (levy date) based on property values as of January 1, 2018. Taxes were due on Nov 15, 2018 (lien date). Taxes collected within the current fiscal year or within 60 days after year-end on the 2018 tax digest are reported as revenue in the governmental

**CHEROKEE COUNTY SCHOOL DISTRICT**

Notes to the Basic Financial Statements

June 30, 2019

funds for fiscal year 2019. The Cherokee Board of Commissioners bills and collects the property taxes for the School District, withholds 2.00% of taxes collected as a fee for tax collection and remits the balance of taxes collected to the School District. Property tax revenues, at the fund reporting level, during the fiscal year ended June 30, 2019, for maintenance and operations amounted to \$156,015,175 and for school bonds amounted to \$4,137,871.

Tax millage rates levied for the 2018 tax year (calendar year) for the School District were as follows (a mill equals \$1 per thousand dollars of assessed value):

School Operations	18.95 mills
School Bonds	<u>0.50</u> mills
	<u>19.45</u> mills

Additionally, Title Ad Valorem Tax revenues, at the fund reporting level, amounted to \$14,116,968 during fiscal year ended June 30, 2019.

**SALES TAXES**

Education Special Purpose Local Option Sales Tax (ESPLOST), at the fund reporting level, during the year ended June 30, 2019 amounted to \$42,354,080 and is to be used for capital outlay for educational purposes or debt service. This sales tax was authorized by local referendum and the sales tax must be re-authorized at least every five years.

**Note 3: BUDGETARY DATA**

The budget is a complete financial plan for the School District's fiscal year and is based upon careful estimates of expenditures together with probable funding sources. The budget is legally adopted each year for the general, debt service, and capital projects funds. There is no statutory prohibition regarding over expenditure of the budget at any level. The budget for all governmental funds, except the various school activity (principal) accounts, is prepared and adopted by fund, function and object. The legal level of budgetary control was established by the Board at the aggregate function level. The budget for the general fund was not prepared in accordance with accounting principles generally accepted in the United States of America.

After the Board has tentatively adopted the budget, the budget is advertised at least once in the local newspaper of general circulation. At the next regularly scheduled meeting after advertisement, the Board receives comments, makes revisions as necessary, and adopts the final budget. The approved budget is then submitted, in accordance with provisions of O.C.G.A. §20-2-167(c), to the Georgia Department of Education. The Board may increase or decrease the budget at any time during the year. All unexpended budget authority lapses at fiscal year-end.

The Superintendent is authorized by the Board to approve adjustments of no more than 5% of the amount budgeted for expenditures in any budget function for any fund. The Superintendent shall report any such adjustments to the Board no later than the next regular meeting of the Board. If expenditure of funds in any budget function for any fund is anticipated to be more than 5% of the budgeted amount, the Superintendent shall request Board approval for the budget amendment.



**CHEROKEE COUNTY SCHOOL DISTRICT**

Notes to the Basic Financial Statements

June 30, 2019

See the General Fund, Debt Service and Capital Projects Statement of Revenues, Expenditures and Changes in Fund Balances – Budget to Actual in the Supplementary Information Section for a detail of any over/under expenditures during the fiscal year under review.

**BUDGETARY/GAAP BASIS RECONCILIATION**

In the general fund, accounting principles used in developing budgets on a budgetary basis differ from those used in preparing financial statements in conformity with generally accepted accounting principles (GAAP).

The primary differences between the budget basis and GAAP basis are:

1. Payments made by the State of Georgia for School District employee benefits are recognized as revenues and expenditures under GAAP and are not recognized on the budget basis.
2. Proceeds and repayments of tax anticipation notes are budgeted by the School District as revenues and expenditures of the general fund. Under generally accepted accounting principles, a tax anticipation note is considered a short-term debt issuance.

Thus, there is an accounting basis difference between the budget and actual Statement of Revenues, Expenditures and Changes in Fund Balances in the general fund that is reconciled as follows:

Actual Revenues, GAAP Basis	\$ 440,853,343	
TAN Proceeds	11,500,000	
On-Behalf Benefit Contribution	<u>(691,820)</u>	
Actual Revenues, Budgetary Basis		\$ <u>451,661,523</u>
Actual Expenditures, GAAP Basis	\$ 434,181,544	
Payback of TAN Principal	11,500,000	
On-Behalf Benefits Expenditure	<u>(691,820)</u>	
Actual Expenditures, Budgetary Basis		\$ <u>444,989,724</u>
Other Financing Sources (Uses) - Net		\$ <u>70,300</u>
Revenues Over Expenditures and Other Financing Sources (Uses), Budgetary Basis		\$ <u><u>6,742,099</u></u>
Revenues Over Expenditures and Other Financing Sources (Uses), GAAP Basis		\$ <u><u>6,742,099</u></u>

**Note 4: DEPOSITS, CASH EQUIVALENTS AND INVESTMENTS**

**COLLATERALIZATION OF DEPOSITS**

O.C.G.A. § 45-8-12 provides that there shall not be on deposit at any time in any depository for a time longer than ten days a sum of money which has not been secured by surety bond, by guarantee of insurance, or by collateral. The aggregate of the face value of such surety bond and the market value of securities pledged shall be equal to not less than 110% of the public funds

## CHEROKEE COUNTY SCHOOL DISTRICT

### Notes to the Basic Financial Statements

June 30, 2019

being secured after the deduction of the amount of deposit insurance. If a depository elects the pooled method (O.C.G.A. § 45-8-13.1) the aggregate of the market value of the securities pledged to secure a pool of public funds shall be not less than 110% of the daily pool balance. As of June 30, 2019, the School District's deposits were secured by surety bond, insurance, or collateral.

Acceptable security for deposits consists of any one of or any combination of the following:

- (1) Surety bond signed by a surety company duly qualified and authorized to transact business within the State of Georgia,
- (2) Insurance on accounts provided by the Federal Deposit Insurance Corporation,
- (3) Bonds, bills, notes, certificates of indebtedness or other direct obligations of the United States or of the State of Georgia,
- (4) Bonds, bills, notes, certificates of indebtedness or other obligations of the counties or municipalities of the State of Georgia,
- (5) Bonds of any public authority created by the laws of the State of Georgia, providing that the statute that created the authority authorized the use of the bonds for this purpose,
- (6) Industrial revenue bonds and bonds of development authorities created by the laws of the State of Georgia, and
- (7) Bonds, bills, notes, certificates of indebtedness, or other obligations of a subsidiary corporation of the United States government, which are fully guaranteed by the United States government both as to principal and interest or debt obligations issued by or securities guaranteed by the Federal Land Bank, the Federal Home Loan Bank, the Federal Intermediate Credit Bank, the Central Bank for Cooperatives, the Farm Credit Banks, the Federal Home Loan Mortgage Association, and the Federal National Mortgage Association.

#### CATEGORIZATION OF DEPOSITS

Custodial credit risk is the risk that in the event of a bank failure, the School District's deposits may not be returned to it. The School District does not have a formal deposit policy for managing custodial credit risk. At June 30, 2019, the School District had deposits with a carrying amount of \$48,169,324, which includes \$65,316 in Certificates of Deposit that are recorded as investments. Bank balances at June 30, 2019 were \$49,811,475. The bank balances insured by Federal depository insurance were \$7,036,011 and the bank balances collateralized with securities held by the pledging financial institution's trust department or agent in the School District's name were \$42,775,464.

#### CATEGORIZATION OF CASH EQUIVALENTS

The School District reported cash equivalents of \$85,730,269 in Georgia Fund 1, a local government investment pool, which is included in the cash balances above. Georgia Fund 1 is not registered with the SEC as an investment company and does not operate in a manner consistent with the SEC's Rule 2a-7 of the Investment Company Act of 1940. The investment is valued at the pool's share price, \$1.00 per share, which approximates fair value. The pool is an AAf rated investment pool by Standard and Poor's. The weighted average maturity of Georgia

**CHEROKEE COUNTY SCHOOL DISTRICT**

Notes to the Basic Financial Statements

June 30, 2019

Fund 1 may not exceed 60 days. The weighted average maturity for Georgia Fund 1 on June 30, 2019, was 39 days.

Georgia Fund 1, administered by the State of Georgia, Office of the State Treasurer, is not required to be categorized since the School District did not own any specific identifiable securities in the pool. The investment policy of the State of Georgia, Office of the State Treasurer for the Georgia Fund 1, does not provide for investment in derivatives or similar investments. Additional information on the Georgia Fund 1 is disclosed in the *State of Georgia* Comprehensive Annual Financial Report. This audit can be obtained from the Georgia Department of Audits and Accounts at [www.audits.ga.gov/SGD/CAFR.html](http://www.audits.ga.gov/SGD/CAFR.html).

**CATEGORIZATION OF INVESTMENTS**

The School District measures and records its investments using fair value measurement guidelines established by generally accepted accounting principles. These guidelines recognize a three-tiered fair value hierarchy, as follows:

- Level 1: Quoted prices for identical investments in active markets;
- Level 2: Observable inputs other than quoted market prices; and,
- Level 3: Unobservable inputs

At June 30, 2019, the School District had the following investments by fair value level:

<u>Investments by fair value level:</u>	<u>Fair Value</u>	<u>Maturity</u>	<u>Fair Value Level</u>
Repurchase Agreements	\$ 18,018,043	Less than 1 year	Level 1
Investments not subject to level disclosure:			
Certificates of Deposit	<u>65,316</u>		
Total investments by fair value level	<u>\$ 18,083,359</u>		

The Repurchase Agreements in Level 1 of the fair value hierarchy are valued using prices quoted in active markets for these investments. Certificates of deposit are reported at cost.

**Interest Rate Risk**

Interest rate risk is the risk that changes in interest rates of debt investments will adversely affect the fair value of an investment. The School District does not have a formal policy for managing interest rate risk.

**Custodial Credit Risk**

Custodial credit risk for investments is the risk that, in the event of the failure of the counterparty to a transaction, the School District will not be able to recover the value of the investment or collateral securities that are in the possession of an outside party. The School District does not have a formal policy for managing custodial credit risk.

At June 30, 2019, \$18,083,359 of the School District's applicable investments were insured or registered, with securities held by the entity or its agent, in the School District's name.

**CHEROKEE COUNTY SCHOOL DISTRICT**

Notes to the Basic Financial Statements

June 30, 2019

**Credit Quality Risk**

Credit quality risk is the risk that an issuer of other counterparty to an investment will not fulfill its obligations. State law limits investments to those prescribed by O.C.G.A. § 36-83-4. The School District does not have a formal policy for managing credit quality risk.

The investments subject to credit quality risk are reflected below:

<u>Investment Type</u>	<u>Fair Value</u>	<u>Unrated</u>
Repurchase Agreements	\$ 18,018,043	\$ 18,018,043
	<u>\$ 18,018,043</u>	<u>\$ 18,018,043</u>

**Note 5: CAPITAL ASSETS**

The following is a summary of changes in the capital assets for governmental activities during the fiscal year:

	<u>Balances July 1, 2018</u>	<u>Increases</u>	<u>Decreases</u>	<u>Transfers</u>	<u>Balances June 30, 2019</u>
Governmental Activities					
Capital Assets, Not Being Depreciated:					
Land	\$ 31,248,204	\$ 2,727,441	\$ -	\$ -	\$ 33,975,645
Construction in Progress	<u>2,116,527</u>	<u>4,936,911</u>	<u>-</u>	<u>(522,286)</u>	<u>6,531,152</u>
Total Capital Assets Not Being Depreciated	<u>33,364,731</u>	<u>7,664,352</u>	<u>-</u>	<u>(522,286)</u>	<u>40,506,797</u>
Capital Assets Being Depreciated					
Buildings and Improvements	721,093,860	3,283,625	-	-	724,377,485
Equipment	45,214,030	6,451,219	1,124,307	-	50,540,942
Land Improvements	24,773,933	4,730,261	-	522,286	30,026,480
Less Accumulated Depreciation for:					
Buildings and Improvements	198,276,991	15,190,451	-	-	213,467,442
Equipment	35,642,176	2,576,926	1,042,640	-	37,176,462
Land Improvements	<u>14,401,964</u>	<u>964,116</u>	<u>-</u>	<u>-</u>	<u>15,366,080</u>
Total Capital Assets, Being Depreciated, Net	<u>542,760,692</u>	<u>(4,266,388)</u>	<u>81,667</u>	<u>522,286</u>	<u>538,934,923</u>
Governmental Activities Capital Assets - Net	<u>\$ 576,125,423</u>	<u>\$ 3,397,964</u>	<u>\$ 81,667</u>	<u>\$ -</u>	<u>\$ 579,441,720</u>

**CHEROKEE COUNTY SCHOOL DISTRICT**

Notes to the Basic Financial Statements

June 30, 2019

Current year depreciation expense by function is as follows:

Instructional Services		\$ 16,101,320
Support Services		
General Administration	\$ 790,018	
School Administration	360,360	
Support Services - Business	31,454	
Maintenance and Operation	279,479	
Student Transportation Services	<u>1,130,043</u>	2,591,354
School Nutrition		<u>38,819</u>
		<u>\$ 18,731,493</u>

**Note 6: SHORT-TERM DEBT**

The School District issues tax anticipation notes in advance of property tax collections, depositing the proceeds in its general fund. This short-term debt is to provide cash for operations until property tax collections are received by the School District. Article IX, Section V, Paragraph V of the Constitution of the State of Georgia limits the aggregate amount of short-term debt to 75% of the total gross income from taxes collected in the preceding year and requires all short-term debt to be repaid no later than December 31 of the calendar year in which the debt was incurred.

Short-term debt activity for the fiscal year is as follows:

	<u>Beginning Balance</u>	<u>Issued</u>	<u>Redeemed</u>	<u>Ending Balance</u>
Tax Anticipation Notes	\$ -	\$ 11,500,000	\$ 11,500,000	\$ -

**Note 7: LONG-TERM LIABILITIES**

The changes in long-term liabilities during the fiscal year for governmental activities were as follows:

	<u>Governmental Activities</u>				
	<u>Balance July 1, 2018</u>	<u>Additions</u>	<u>Deductions</u>	<u>Balance June 30, 2019</u>	<u>Due Within One Year</u>
General Obligation (G.O.) Bonds	\$ 382,450,000	\$ -	\$ 9,420,000	\$ 373,030,000	\$ 16,110,000
Unamortized Bond Premiums	48,598,225	-	6,810,152	41,788,073	6,489,699
Qualified School Construction Bonds	40,055,000	-	-	40,055,000	-
Compensated Absences	<u>1,545,657</u>	<u>977,754</u>	<u>986,181</u>	<u>1,537,230</u>	<u>1,103,891</u>
	<u>\$ 472,648,882</u>	<u>\$ 977,754</u>	<u>\$ 17,216,333</u>	<u>\$ 456,410,303</u>	<u>\$ 23,703,590</u>

**GENERAL OBLIGATION DEBT OUTSTANDING**

The School District's bonded debt consists of various issues of general obligation bonds that are generally callable with interest payable semiannually. Bond proceeds primarily pay for acquiring or constructing capital facilities. Bonds have also been issued to advance-refund previously

**CHEROKEE COUNTY SCHOOL DISTRICT**

Notes to the Basic Financial Statements

June 30, 2019

issued bonds. The School District repays general obligation bonds from voter-approved property taxes and sales taxes. General obligation bonds are direct obligations and pledge the full faith and credit of the School District.

Voters have authorized \$75,315,000 in general obligation debt for capital outlay projects and the costs of issuing and paying capitalized interest which was not issued as of June 30, 2019.

General Obligation Bonds currently outstanding are as follows:

<u>Description</u>	<u>Interest Rates</u>	<u>Issue Date</u>	<u>Maturity Date</u>	<u>Amount Issued</u>	<u>Amount Outstanding</u>
2009A Series	4.00-5.00%	6/18/2009	8/1/2019	\$ 52,880,000	\$ 8,000,000
2009B Series	5.87%	6/18/2009	8/1/2028	48,375,000	48,375,000
2012 Series	5.00%	11/1/2012	8/1/2033	35,930,000	34,085,000
2014A Series	5.00%	2/6/2014	8/1/2033	46,885,000	40,970,000
2014B Series	3.75-5.00%	2/6/2014	8/1/2025	34,430,000	34,430,000
2015 Series	4.00-5.00%	2/15/2015	2/1/2033	108,960,000	106,625,000
2016 Series	5.00%	5/19/2016	8/1/2023	42,685,000	42,685,000
2017 Series	3.00-5.00%	5/9/2017	2/1/2033	18,175,000	18,175,000
2018 Series	5.00%	5/3/2018	8/1/2033	39,685,000	39,685,000
Total General Obligation Bonds				<u>\$ 428,005,000</u>	<u>\$ 373,030,000</u>

At June 30, 2019, principal and interest payments due by fiscal year for general obligation bonds are as follows:

<u>Payments Due in Fiscal Year Ending June 30</u>	<u>Principal</u>	<u>Interest</u>	<u>Amortization of Bond Premium</u>
2020	\$ 16,110,000	\$ 18,486,350	\$ 6,489,699
2021	21,270,000	17,611,825	6,014,519
2022	25,100,000	16,509,950	5,364,333
2023	27,105,000	15,228,325	4,618,161
2024	29,285,000	13,844,950	3,811,513
2025-2029	165,015,000	42,753,332	12,259,528
2030-2034	89,145,000	11,158,513	3,230,320
Total	<u>\$ 373,030,000</u>	<u>\$ 135,593,245</u>	<u>\$ 41,788,073</u>

**QUALIFIED SCHOOL CONSTRUCTION BONDS (QSCB)**

Section 1521 of the American Recovery and Reinvestment Act (ARRA) of 2009 provides for a source of capital at no or nominal interest rates for costs incurred by School Districts in connection with the construction, rehabilitation or repair of a public school facility or for the acquisition of land where a school will be built. Investors receive Federal income tax credits at prescribed tax credit

**CHEROKEE COUNTY SCHOOL DISTRICT**

Notes to the Basic Financial Statements

June 30, 2019

rates in lieu of interest, which essentially allows School Districts to borrow without incurring interest costs.

When the stated interest rate on the QSCB results in interest payments that exceed the supplemental interest payments discussed in the preceding paragraph, the School District may apply for a direct cash subsidy payment from the U.S. Treasury which is intended to reduce the stated interest rate to a nominal percentage. To qualify for this subsidy, the School District is required to periodically file appropriate documents with the Internal Revenue Service. These subsidy payments do not include the amount of any supplemental interest paid on a QSCB. The interest subsidy received by the School District in fiscal year 2019 was \$2,014,670, which funded all but \$238,824 of interest expense due on the QSCB.

Debt currently outstanding under Qualified School Construction Bonds is as follows:

<u>Description</u>	<u>Interest Rates</u>	<u>Issue Date</u>	<u>Maturity Date</u>	<u>Amount Issued</u>	<u>Amount Outstanding</u>
2010B Series	5.63%	11/11/2010	8/1/2028	\$ 40,055,000	\$ 40,055,000

The following is a schedule of total Qualified School Construction Bond payments:

<u>Fiscal Year Ended</u> <u>June 30:</u>	<u>Principal</u>	<u>Interest</u>
2020	\$ -	\$ 2,253,494
2021	-	2,253,494
2022	-	2,253,494
2023	-	2,253,494
2024	-	2,253,494
2025 - 2029	40,055,000	9,075,160
<b>Total</b>	<b>\$ 40,055,000</b>	<b>\$ 20,342,630</b>

**COMPENSATED ABSENCES**

Compensated absences represent obligations of the School District relating to employees' rights to receive compensation for future absences based upon service already rendered. This obligation relates only to vesting accumulating leave in which payment is probable and can be reasonably estimated. Typically, the general fund is the fund used to liquidate this long-term debt. The School District uses the vesting method to compute compensated absences.

**Note 8: RISK MANAGEMENT**

The School District is exposed to various risks of loss related to torts; theft of, damage to and destruction of assets; errors or omissions; job related illness or injuries to employees; and natural disasters. Except as described below, the School District carries commercial insurance for these risks. Settled claims resulting from these insured risks have not exceed commercial insurance coverage in any of the past three fiscal years.

**CHEROKEE COUNTY SCHOOL DISTRICT**

Notes to the Basic Financial Statements

June 30, 2019

The School District is self-insured for workers' compensation, unemployment claims, and dental claims. The School District purchases commercial insurance for all other risks of loss. Settled claims have not exceeded purchased commercial insurance coverage in any of the past three years.

**WORKERS' COMPENSATION**

The School District has established a limited risk management program for workers' compensation claims. The School District accounts for claims within the general fund with expenses/expenditures and liability being reported when it is probable that a loss has occurred, and the amount of that loss can be reasonably estimated. An excess coverage insurance policy covers individual claims in excess of \$400,000 loss per occurrence, up to the statutory limit.

Changes in the workers' compensation claims liability during the last two fiscal years are as follows:

	<u>Beginning of Year Liability</u>	<u>Claims and Changes in Estimates</u>	<u>Claims Paid</u>	<u>End of Year Liability</u>
2018	\$ <u>610,163</u>	\$ <u>406,007</u>	\$ <u>536,464</u>	\$ <u>479,706</u>
2019	\$ <u>479,706</u>	\$ <u>976,419</u>	\$ <u>995,302</u>	\$ <u>460,823</u>

**UNEMPLOYMENT COMPENSATION**

The School District is self-insured with regard to unemployment compensation claims. The School District accounts for claims within the general fund with expenses/expenditures and liability being reported when it is probable that a loss has occurred, and the amount of that loss can be reasonably estimated. There was no liability reported for unemployment compensation claims during the last two fiscal years.

**DENTAL CLAIMS**

The School District is self-insured with regard to dental claims. The School District accounts for dental claims expenditures and liability in the general fund when it is probable that a loss has occurred and the amount of the loss can be reasonably estimated.

Changes in the dental claims liability during the last two fiscal years are as follows:

	<u>Beginning of Year Liability</u>	<u>Claims and Changes in Estimates</u>	<u>Claims Paid</u>	<u>End of Year Liability</u>
2018	\$ <u>35,449</u>	\$ <u>2,845,551</u>	\$ <u>2,842,572</u>	\$ <u>38,428</u>
2019	\$ <u>38,428</u>	\$ <u>2,834,219</u>	\$ <u>2,853,102</u>	\$ <u>19,545</u>



**CHEROKEE COUNTY SCHOOL DISTRICT**

Notes to the Basic Financial Statements

June 30, 2019

**SURETY BOND**

The School District purchased surety bonds to provide additional insurance coverage as follows:

<u>Position Covered</u>	<u>Amount</u>
Superintendent	\$ 100,000
Chief Financial Officer	\$ 100,000
School Principals	\$ 10,000

**Note 9: SIGNIFICANT COMMITMENTS**

The following is an analysis of significant outstanding construction or renovation contracts executed by the School District as of June 30, 2019, together with funding available:

<u>Project</u>	<u>Unearned Executed Contracts<sup>1</sup></u>	<u>Payments Through June 30, 2019<sup>2</sup></u>	<u>Funding Available From State<sup>1</sup></u>
Mill Creek MS Addition	\$ 1,763,116	\$ 5,659,384	\$ 1,759,257
Synthetic Turf Fields	2,701,651	2,234,937	-
	<u>\$ 4,464,767</u>	<u>\$ 7,894,321</u>	<u>\$ 1,759,257</u>

<sup>1</sup> The amounts described in this note are not reflected in the basic financial statements.

<sup>2</sup> Payments include contracts and retainages payable at year-end.

**Note 10: OPERATING LEASES**

The Cherokee County School District has entered into various lease agreements as lessee for office equipment. These leases are considered for accounting purposes to be operating leases. Rental expenditures under the terms of the operating leases totaled \$309,712 for the year ended June 30, 2019. The following future minimum lease payments were required under operating leases at June 30, 2019:

<u>Year Ending</u>	<u>Lease Payments</u>
2020	309,172
2021	309,172
2022	25,764
Total	<u>\$ 644,108</u>

**Note 11: SIGNIFICANT CONTINGENT LIABILITIES**

**FEDERAL GRANTS**

Amounts received or receivable principally from the Federal government are subject to audit and review by grantor agencies. This could result in requests for reimbursement to the grantor agency for any costs which are disallowed under grant terms. Any disallowances resulting from the

## CHEROKEE COUNTY SCHOOL DISTRICT

### Notes to the Basic Financial Statements

June 30, 2019

grantor audit may become a liability of the School District. However, the School District believes that such disallowances, if any, will be immaterial to its overall financial position.

#### LITIGATION

The School District is a defendant in various legal proceedings pertaining to matters incidental to the performance of routine School District operations. The ultimate disposition of these proceedings is not presently determinable but is not believed to have a material adverse effect on the financial condition of the School District.

#### **Note 12: OTHER POST-EMPLOYMENT BENEFITS (OPEB)**

##### GEORGIA SCHOOL PERSONNEL POST-EMPLOYMENT HEALTH BENEFIT FUND

**Plan Description:** Certified teachers and non-certified public school employees of the School District as defined in §20-2-875 of the Official Code of Georgia Annotated (O.C.G.A.) are provided OPEB through the School OPEB Fund - a cost-sharing multiple-employer defined benefit postemployment healthcare plan, reported as an employee trust fund and administered by a Board of Community Health (Board). Title 20 of the O.C.G.A. assigns the authority to establish and amend the benefit terms of the group health plan to the Board.

**Benefits Provided:** The School OPEB Fund provides healthcare benefits for retirees and their dependents due under the group health plan for public school teachers, including librarians, other certified employees of public schools, regional educational service agencies and non-certified public school employees. Retiree medical eligibility is attained when an employee retires and is immediately eligible to draw a retirement annuity from Employees' Retirement System (ERS), Georgia Judicial Retirement System (JRS), Legislative Retirement System (LRS), Teachers Retirement System (TRS) or Public School Employees Retirement System (PSERS). If elected, dependent coverage starts on the same day as retiree coverage. Medicare-eligible retirees are offered Standard and Premium Medicare Advantage plan options. Non-Medicare eligible retiree plan options include Health Reimbursement Arrangement (HRA), Health Maintenance Organization (HMO) and a High Deductible Health Plan (HDHP). The School OPEB Fund also pays for administrative expenses of the fund. By law, no other use of the assets of the School OPEB Fund is permitted.

**Contributions:** As established by the Board, the School OPEB Fund is substantially funded on a pay-as-you-go basis; that is, annual cost of providing benefits will be financed in the same year as claims occur. Contributions to the School OPEB Fund from the School District were \$12,015,177 for the year ended June 30, 2019. Active employees are not required to contribute to the School OPEB Fund.

#### **OPEB Liabilities, OPEB Expense, and Deferred Outflows of Resources and Deferred Inflows of Resources Related to OPEB**

At June 30, 2019, the School District reported a liability of \$279,928,576 for its proportionate share of the net OPEB liability. The net OPEB liability was measured as of June 30, 2018. The total OPEB liability used to calculate the net OPEB liability was based on an actuarial valuation as of June 30, 2017. An expected total OPEB liability as of June 30, 2018 was determined using standard roll-forward techniques. The School District's proportion of the net OPEB liability was actuarially determined based on employer contributions during the fiscal year ended June 30,

**CHEROKEE COUNTY SCHOOL DISTRICT**

Notes to the Basic Financial Statements

June 30, 2019

2018. At June 30, 2018, the School District's proportion was 2.2025%, which was an increase of 0.0216% from its proportion measured as of June 30, 2017.

For the year ended June 30, 2019, the School District recognized OPEB expense of \$13,408,631. At June 30, 2019, the School District reported deferred outflows of resources and deferred inflows of resources related to OPEB from the following sources:

	OPEB	
	Deferred Outflows of Resources	Deferred Inflows of Resources
Differences between expected and actual experience	\$ -	\$ 6,367,273
Changes of assumptions	-	47,421,247
Net difference between projected and actual earnings on OPEB plan investments	378,742	-
Changes in proportion and differences between School District contributions and proportionate share of contributions	7,670,920	-
School District contributions subsequent to the measurement date	12,015,177	-
Total	\$ 20,064,839	\$ 53,788,520

School District contributions subsequent to the measurement date are reported as deferred outflows of resources and will be recognized as a reduction of the net OPEB liability in the year ended June 30, 2020. Other amounts reported as deferred outflows of resources and deferred inflows of resources related to OPEB will be recognized in OPEB expense as follows:

Year Ended June 30:	OPEB
2020	\$ (8,793,850)
2021	\$ (8,793,850)
2022	\$ (8,793,850)
2023	\$ (8,816,478)
2024	\$ (7,502,849)
Thereafter	\$ (3,037,981)

**CHEROKEE COUNTY SCHOOL DISTRICT**

Notes to the Basic Financial Statements

June 30, 2019

**Actuarial assumptions:** The total OPEB liability as of June 30, 2018 was determined by an actuarial valuation as of June 30, 2017 using the following actuarial assumptions and other inputs, applied to all periods included in the measurement and rolled forward to the measurement date of June 30, 2018:

**OPEB:**

Inflation	2.75%
Salary increases	3.25% - 9.00%, including inflation
Long-term expected rate of return	7.30%, compounded annually, net of investment expense, and including inflation
Healthcare cost trend rate	
Pre-Medicare Eligible	7.50%
Medicare Eligible	5.50%
Ultimate trend rate	
Pre-Medicare Eligible	4.75%
Medicare Eligible	4.75%
Year of Ultimate trend rate	
Pre-Medicare Eligible	2028
Medicare Eligible	2022

Mortality rates were based on the RP-2000 Combined Mortality Table for Males or Females, as appropriate, with adjustments for mortality improvements based on Scale BB as follows:

- For TRS members: The RP-2000 White Collar Mortality Table projected to 2025 with projection scale BB (set forward 1 year for males) is used for death after service retirement and beneficiaries. The RP-2000 Disabled Mortality Table projected to 2025 with projection scale BB (set forward two years for males and four years for females) is used for death after disability retirement.
- For PSERS members: The RP-2000 Blue-Collar Mortality Table projected to 2025 with projection scale BB (set forward 3 years for males and 2 years for females) is used for the period after service retirement and for beneficiaries of deceased members. The RP-2000 Disabled Mortality Table projected to 2025 with projection scale BB (set forward 5 years for both males and females) is used for the period after disability retirement.

The actuarial assumptions used in the June 30, 2017 valuation were based on the results of an actuarial experience study for the pension systems, which covered the five-year period ending June 30, 2014.

The remaining actuarial assumptions (e.g., initial per capita costs, health care cost trends, rate of plan participation, rates of plan election, etc.) used in the June 30, 2017 valuation were based on a review of recent plan experience done concurrently with the June 30, 2017 valuation.

Projection of benefits for financial reporting purposes are based on the substantive plan (the plan as understood by the employer and plan members) and include the types of benefits provided at the time of each valuation and the historical pattern of sharing of benefit costs between the employer and plan members to that point. The actuarial methods and assumptions used include techniques that are designed to reduce the effects of short-term volatility in actuarial accrued

**CHEROKEE COUNTY SCHOOL DISTRICT**

Notes to the Basic Financial Statements

June 30, 2019

liabilities and the actuarial value of assets, consistent with the long-term perspective of the calculation.

The long-term expected rate of return on OPEB plan investments was determined using a log-normal distribution analysis in which best-estimate ranges of expected future real rates of return (expected nominal returns, net of investment expense and the assumed rate of inflation) are developed for each major asset class. These ranges are combined to produce the long-term expected rate of return by weighting the expected future real rates of return by the target asset allocation percentage and by adding expected inflation. During fiscal year 2018, the School OPEB fund updated their investment strategy to a more long-term approach. The target allocation and best estimates of arithmetic real rates of return for each major asset class are summarized in the following table:

Asset class	Target allocation	Long-Term Expected Real Rate of Return*
Fixed income	30.00%	(0.50)%
Domestic Stocks -- Large Cap	37.20%	9.00%
Domestic Stocks -- Mid Cap	3.40%	12.00%
Domestic Stocks -- Small Cap	1.40%	13.50%
Int'l Stocks - Developed Mkt	17.80%	8.00%
Int'l Stocks - Emerging Mkt	5.20%	12.00%
Alternatives	5.00%	10.50%
Total	100.00%	

\*Net of Inflation

**Discount rate:** The discount rate has changed since the prior measurement date from 3.58% to 3.87%. In order to measure the total OPEB liability for the School OPEB Fund, a single equivalent interest rate of 3.87% was used as the discount rate. This is comprised mainly of the yield or index rate for 20-year tax-exempt general obligation municipal bonds with an average rating of AA or higher (3.87% per the Bond Buyers Index). The projection of cash flows used to determine the discount rate assumed that contributions from members and from the employer will be made at the current level as averaged over the last five years, adjusted for annual projected changes in headcount. Projected future benefit payments for all current plan members were projected through 2118. Based on these assumptions, the OPEB plan's fiduciary net position was projected to be available to make OPEB payments for inactive employees through year 2018. Therefore, the calculated discount rate of 3.87% was applied to all periods of projected benefit payments to determine the total OPEB liability.

**CHEROKEE COUNTY SCHOOL DISTRICT**

Notes to the Basic Financial Statements

June 30, 2019

**Sensitivity of the District's proportionate share of the net OPEB liability to changes in the discount rate:** The following presents the School District's proportionate share of the net OPEB liability calculated using the discount rate of 3.87%, as well as what the School District's proportionate share of the net OPEB liability would be if it were calculated using a discount rate that is 1-percentage-point lower (2.87%) or 1-percentage-point higher (4.87%) than the current discount rate:

	<u>1% Decrease (2.87%)</u>		<u>Current Discount Rate (3.87%)</u>		<u>1% Increase (4.87%)</u>
School District's proportionate share of the Net OPEB Liability	\$ 326,868,806	\$	279,928,576	\$	\$ 242,076,192

**Sensitivity of the District's proportionate share of the net OPEB liability to changes in the healthcare cost trend rates:** The following presents the School District's proportionate share of the net OPEB liability, as well as what the School District's proportionate share of the net OPEB liability would be if it were calculated using healthcare cost trend rates that are 1-percentage-point lower or 1-percentage-point higher than the current healthcare cost trend rates:

	<u>1% Decrease</u>		<u>Current Healthcare Cost Trend Rate</u>		<u>1% Increase</u>
School District's proportionate share of the Net OPEB Liability	\$ 235,338,207	\$	279,928,576	\$	\$ 336,913,424

**OPEB plan fiduciary net position:** Detailed information about the OPEB plan's fiduciary net position is available in the Comprehensive Annual Financial Report (CAFR) which is publicly available at <https://sao.georgia.gov/comprehensive-annual-financial-reports>.

**Note 13: RETIREMENT PLANS**

The School District participates in various retirement plans administered by the State of Georgia, as further explained below.

**TEACHERS RETIREMENT SYSTEM OF GEORGIA (TRS)**

**Plan Description:** All teachers of the School District as defined in O.C.G.A §47-3-60 and certain other support personnel as defined by O.C.G.A. §47-3-63 are provided a pension through the Teachers Retirement System of Georgia (TRS). TRS, a cost-sharing multiple-employer defined benefit pension plan, is administered by the TRS Board of Trustees (TRS Board). Title 47 of the O.C.G.A. assigns the authority to establish and amend the benefit provisions to the State Legislature. The Teachers Retirement System of Georgia issues a publicly available separate financial report that can be obtained at [www.trsga.com/publications](http://www.trsga.com/publications).

**Benefits Provided:** TRS provides service retirement, disability retirement, and death benefits. Normal retirement benefits are determined as 2% of the average of the employee's two highest paid consecutive years of service, multiplied by the number of years of creditable service up to 40 years. An employee is eligible for normal service retirement after 30 years of creditable service, regardless of age, or after 10 years of service and attainment of age 60. Ten years of service is required for disability and death benefits eligibility. Disability benefits are based on the employee's creditable service and compensation up to the time of disability. Death benefits equal the amount

## CHEROKEE COUNTY SCHOOL DISTRICT

### Notes to the Basic Financial Statements

June 30, 2019

that would be payable to the employee's beneficiary had the employee retired on the date of death. Death benefits are based on the employee's creditable service and compensation up to the date of death.

**Contributions:** Per Title 47 of the O.C.G.A., contribution requirements of active employees and participating employers, as actuarially determined, are established and may be amended by the TRS Board. Pursuant to O.C.G.A. §47-3-63, the employer contributions for certain full-time public school support personnel are funded on behalf of the employer by the State of Georgia. Contributions are expected to finance the costs of benefits earned by employees during the year, with an additional amount to finance any unfunded accrued liability. Employees were required to contribute 6.00% of their annual pay during fiscal year 2019. The School District's contractually required contribution rate for the year ended June 30, 2019 was 20.90% of annual School District payroll, of which 20.84% of payroll was required from the School District and .06% of payroll was required from the State. For the current fiscal year, employer contributions to the pension plan were \$49,737,547 and \$157,222 from the School District and the State, respectively.

#### EMPLOYEES' RETIREMENT SYSTEM

**Plan description:** The Employees' Retirement System of Georgia (ERS) is a cost-sharing multiple-employer defined benefit pension plan established by the Georgia General Assembly during the 1949 Legislative Session for the purpose of providing retirement allowances for employees of the State of Georgia and its political subdivisions. ERS is directed by a Board of Trustees. Title 47 of the O.C.G.A. assigns the authority to establish and amend the benefit provisions to the State Legislature. ERS issues a publicly available financial report that can be obtained at [www.ers.ga.gov/financials](http://www.ers.ga.gov/financials).

**Benefits provided:** The ERS Plan supports three benefit tiers: Old Plan, New Plan, and Georgia State Employees' Pension and Savings Plan (GSEPS). Employees under the old plan started membership prior to July 1, 1982 and are subject to plan provisions in effect prior to July 1, 1982. Members hired on or after July 1, 1982 but prior to January 1, 2009 are new plan members subject to modified plan provisions. Effective January 1, 2009, new state employees and rehired state employees who did not retain membership rights under the Old or New Plans are members of GSEPS. ERS members hired prior to January 1, 2009 also have the option to irrevocably change their membership to GSEPS.

Under the old plan, the new plan, and GSEPS, a member may retire and receive normal retirement benefits after completion of 10 years of creditable service and attainment of age 60 or 30 years of creditable service regardless of age. Additionally, there are some provisions allowing for early retirement after 25 years of creditable service for members under age 60.

Retirement benefits paid to members are based upon the monthly average of the member's highest 24 consecutive calendar months, multiplied by the number of years of creditable service, multiplied by the applicable benefit factor. Annually, postretirement cost-of-living adjustments may also be made to members' benefits, provided the members were hired prior to July 1, 2009. The normal retirement pension is payable monthly for life; however, options are available for distribution of the member's monthly pension, at reduced rates, to a designated beneficiary upon the member's death. Death and disability benefits are also available through ERS.

## CHEROKEE COUNTY SCHOOL DISTRICT

### Notes to the Basic Financial Statements

June 30, 2019

**Contributions:** Member contributions under the old plan are 4% of annual compensation, up to \$4,200, plus 6% of annual compensation in excess of \$4,200. Under the old plan, the state pays member contributions in excess of 1.25% of annual compensation. Under the old plan, these state contributions are included in the members' accounts for refund purposes and are used in the computation of the members' earnable compensation for the purpose of computing retirement benefits. Member contributions under the new plan and GSEPS are 1.25% of annual compensation. The School District's required contribution rate for the year ended June 30, 2019 was 24.78% of annual covered payroll for old and new plan members and 21.78% for GSEPS members. The rates include the annual actuarially determined employer contributions rate of 24.66% of annual covered payroll of new and old plan members and 21.66% of GSEPS members, plus a 0.12% adjustment for the HB 751 one-time benefit adjustment of 3% to retired state employees. Contributions are expected to finance the costs of benefits earned by employees during the year, with an additional amount to finance any unfunded accrued liability. There were no employer contributions to the pension plan for the current fiscal year.

#### PUBLIC SCHOOL EMPLOYEES RETIREMENT SYSTEM (PSERS)

**Plan description:** PSERS is a cost-sharing multiple-employer defined benefit pension plan established by the Georgia General Assembly in 1969 for the purpose of providing retirement allowances for public school employees who are not eligible for membership in the Teachers Retirement System of Georgia. The ERS Board of Trustees, plus two additional trustees, administers PSERS. Title 47 of the O.C.G.A. assigns the authority to establish and amend the benefit provisions to the State Legislature. PSERS issues a publicly available financial report that can be obtained at [www.ers.ga.gov/financials](http://www.ers.ga.gov/financials).

**Benefits provided:** A member may retire and elect to receive normal monthly retirement benefits after completion of ten years of creditable service and attainment of age 65. A member may choose to receive reduced benefits after age 60 and upon completion of ten years of service.

Upon retirement, the member will receive a monthly benefit of \$15, multiplied by the number of years of creditable service. Death and disability benefits are also available through PSERS. Additionally, PSERS may make periodic cost-of-living adjustments to the monthly benefits. Upon termination of employment, member contributions with accumulated interest are refundable upon request by the member. However, if an otherwise vested member terminates and withdraws his/her member contribution, the member forfeits all rights to retirement benefits.

**Contributions:** The general assembly makes an annual appropriation to cover the employer contribution to PSERS on behalf of local school employees (bus drivers, cafeteria workers, and maintenance staff). The annual employer contribution required by statute is actuarially determined and paid directly to PSERS by the State Treasurer in accordance with O.C.G.A. §47-4-29(a) and 60(b). Contributions are expected to finance the costs of benefits earned by employees during the year, with an additional amount to finance any unfunded accrued liability.

Individuals who became members prior to July 1, 2012 contribute \$4 per month for nine months each fiscal year. Individuals who became members on or after July 1, 2012 contribute \$10 per month for nine months each fiscal year. The State of Georgia, although not the employer of PSERS members, is required by statute to make employer contributions actuarially determined and approved and certified by the PSERS Board of Trustees. The current fiscal year contribution was \$534,598.



**CHEROKEE COUNTY SCHOOL DISTRICT**

Notes to the Basic Financial Statements

June 30, 2019

***Pension Liabilities, Pension Expense, and Deferred Outflows of Resources and Deferred Inflows of Resources Related to Pensions***

At June 30, 2019, the School District reported a liability of \$359,724,288 for its proportionate share of the net pension liability for TRS.

The TRS net pension liability reflected a reduction for support provided to the School District by the State of Georgia for certain public school support personnel. The amount recognized by the School District as its proportionate share of the net pension liability, the related State of Georgia support, and the total portion of the net pension liability that was associated with the School District were as follows:

School District's proportionate share of the net pension liability	\$	359,724,288
State of Georgia's proportionate share of the net pension liability associated with the School District		<u>1,186,863</u>
Total	\$	<u>360,911,151</u>

The net pension liability for TRS and ERS was measured as of June 30, 2018. The total pension liability used to calculate the net pension liability was based on an actuarial valuation as of June 30, 2017. An expected total pension liability as of June 30, 2018 was determined using standard roll-forward techniques. The School District's proportion of the net pension liability was based on contributions to TRS and ERS during the fiscal year ended June 30, 2018.

At June 30, 2018, the School District's TRS proportion was 1.94%, which was an increase of 0.02% from its proportion measured as of June 30, 2017. At June 30, 2018, the School District's ERS proportion was 0.00%, which was a decrease of 0.002774% from its proportion measured as of June 30, 2017.

At June 30, 2019, the School District did not have a PSERS liability for a proportionate share of the net pension liability because of a Special Funding Situation with the State of Georgia, which is responsible for the net pension liability of the plan. The amount of the State's proportionate share of the net pension liability associated with the School District is \$3,228,085.

The PSERS net pension liability was measured as of June 30, 2018. The total pension liability used to calculate the net pension liability was based on an actuarial valuation as of June 30, 2017. An expected total pension liability as of June 30, 2018 was determined using standard roll-forward techniques. The State's proportion of the net pension liability associated with the School District was based on actuarially determined contributions paid by the State during the fiscal year ended June 30, 2018.

For the year ended June 30, 2019, the School District recognized pension expense of \$38,710,118 for TRS, (\$7,406) for ERS and \$747,419 for PSERS and revenue of (\$5,228) for TRS and \$747,419 for PSERS. The revenue is support provided by the State of Georgia. For TRS the State of Georgia support is provided only for certain support personnel.

**CHEROKEE COUNTY SCHOOL DISTRICT**

Notes to the Basic Financial Statements

June 30, 2019

At June 30, 2019, the School District reported deferred outflows of resources and deferred inflows of resources related to pensions from the following sources:

	TRS		ERS	
	Deferred Outflows of Resources	Deferred Inflows of Resources	Deferred Outflows of Resources	Deferred Inflows of Resources
Differences between expected and actual experience	\$ 23,814,256	\$ 741,400	\$ -	\$ -
Changes of assumptions	5,428,109	-	-	-
Net difference between projected and actual earnings on pension plan investments	-	9,835,560	-	-
Changes in proportion and differences between School District contributions and proportionate share of contributions	4,769,788	891,988	905	68,586
School District contributions subsequent to the measurement date	<u>49,737,547</u>	<u>-</u>	<u>-</u>	<u>-</u>
Total	<u>\$ 83,749,700</u>	<u>\$ 11,468,948</u>	<u>\$ 905</u>	<u>\$ 68,586</u>

The School District contributions subsequent to the measurement date for TRS are reported as deferred outflows of resources and will be recognized as a reduction of the net pension liability in the year ended June 30, 2020. Other amounts reported as deferred outflows of resources and deferred inflows of resources related to pensions will be recognized in pension expense as follows:

Year Ended June 30:	TRS	ERS
2020	\$ 20,388,363	\$ (41,962)
2021	\$ 10,358,039	\$ (25,719)
2022	\$ (9,090,383)	\$ -
2023	\$ 481,111	\$ -
2024	\$ 406,075	\$ -
Thereafter	\$ -	\$ -

**CHEROKEE COUNTY SCHOOL DISTRICT**

Notes to the Basic Financial Statements

June 30, 2019

**Actuarial assumptions:** The total pension liability as of June 30, 2018 was determined by an actuarial valuation as of June 30, 2017, using the following actuarial assumptions, applied to all periods included in the measurement:

**Teachers Retirement System:**

Inflation	2.75%
Salary increases	3.25% – 9.00%, average, including inflation
Investment rate of return	7.50%, net of pension plan investment expense, including inflation

Post-retirement mortality rates were based on the RP-2000 White Collar Mortality Table with future mortality improvement projected to 2025 with the Society of Actuaries' projection scale BB (set forward one year for males) for service requirements and dependent beneficiaries. The RP-2000 Disabled Mortality table with future mortality improvement projected to 2025 with Society of Actuaries' projection scale BB (set forward two years for males and four years for females) was used for the death after disability retirement. Rates of mortality in active service were based on the RP-2000 Employee Mortality Table projected to 2025 with projection scale BB.

The actuarial assumptions used in the June 30, 2017 valuation were based on the results of an actuarial experience study for the period July 1, 2009 – June 30, 2014.

**Employees' Retirement System:**

Inflation	2.75%
Salary increases	3.25% - 7.00%, including inflation
Investment rate of return	7.30%, net of pension plan investment expense, including inflation

Post-retirement mortality rates were based on the RP-2000 Combined Mortality Table with future mortality improvement projected to 2025 with the Society of Actuaries' projection scale BB and set forward 2 years for both males and females for service retirements and dependent beneficiaries. The RP- 2000 Disabled Mortality Table with future mortality improvement projected to 2025 with Society of Actuaries' projection scale BB and set back 7 years for males and set forward 3 years for females was used for death after disability retirement. There is a margin for future mortality improvement in the tables used by the System. Based on the results of the most recent experience study adopted by the Board on December 17, 2015, the numbers of expected future deaths are 9-12% less than the actual number of deaths that occurred during the study period for service retirements and beneficiaries and for disability retirements. Rates of mortality in active service were based on the RP-2000 Employee Mortality Table projected to 2025 with projection scale BB.

The actuarial assumptions used in the June 30, 2017 valuation were based on the results of an actuarial experience study for the period July 1, 2009 – June 30, 2014.

**CHEROKEE COUNTY SCHOOL DISTRICT**

Notes to the Basic Financial Statements

June 30, 2019

**Public School Employees Retirement System:**

Inflation	2.75%
Salary increases	N/A
Investment rate of return	7.30%, net of pension plan investment expense, including inflation

Post-retirement mortality rates were based on the RP-2000 Blue-Collar Mortality Table projected to 2025 with projection scale BB (set forward 3 years for males and 2 years for females) for the period after service retirements and for dependent beneficiaries. The RP-2000 Disabled Mortality projected to 2025 with projection scale BB (set forward 5 years for both males and females) was used for death after disability retirement. There is a margin for future mortality improvement in the tables used by the System. Based on the results of the most recent experience study adopted by the Board on December 17, 2015, the numbers of expected future deaths are 9-11% less than the actual number of deaths that occurred during the study period for healthy retirees and 9-11% less than expected under the selected table for disabled retirees. Rates of mortality in active service were based on the RP-2000 Employee Mortality Table projected to 2025 with projection scale BB.

The actuarial assumptions used in the June 30, 2017 valuation were based on the results of an actuarial experience study for the period July 1, 2009 – June 30, 2014.

The long-term expected rate of return on TRS, ERS and PSERS pension plan investments was determined using a log-normal distribution analysis in which best-estimate ranges of expected future real rates of return (expected returns, net of pension plan investment expense and inflation) are developed for each major asset class. These ranges are combined to produce the long-term expected rate of return by weighting the expected future real rates of return by the target asset allocation percentage and by adding expected inflation. The target asset allocation and best estimates of arithmetic real rates of return for each major asset class are summarized in the following table:

Asset class	TRS Target allocation	ERS/PSERS Target allocation	Long-term expected real rate of return*
Fixed income	30.00%	30.00%	(0.50)%
Domestic large stocks	39.80%	37.20%	9.00%
Domestic mid stocks	3.70%	3.40%	12.00%
Domestic small stocks	1.50%	1.40%	13.50%
International developed market stocks	19.40%	17.80%	8.00%
International emerging market stocks	5.60%	5.20%	12.00%
Alternative	-	5.00%	10.50%
Total	100.00%	100.00%	

\* Rates shown are net of the 2.75% assumed rate of inflation

**Discount rate:** The discount rate used to measure the total TRS pension liability was 7.50%. The discount rate used to measure the total ERS and PSERS pension liability was 7.30%. The projection of cash flows used to determine the discount rate assumed that plan member contributions will be made at the current contribution rate and that employer and

**CHEROKEE COUNTY SCHOOL DISTRICT**

Notes to the Basic Financial Statements

June 30, 2019

nonemployer contributions will be made at rates equal to the difference between actuarially determined contribution rates and the member rate. Based on those assumptions, the TRS, ERS and PSERS pension plan's fiduciary net position was projected to be available to make all projected future benefit payments of current plan members. Therefore, the long-term expected rate of return on pension plan investments was applied to all periods of projected benefit payments to determine the total pension liability.

**Sensitivity of the School District's proportionate share of the net pension liability to changes in the discount rate:** The following presents the School District's proportionate share of the net pension liability calculated using the discount rate of 7.50% and 7.30%, as well as what the School District's proportionate share of the net pension liability would be if it were calculated using a discount rate that is 1-percentage-point lower (6.50% and 6.30%) or 1-percentage-point higher (8.50% and 8.30%) than the current rate:

<b>Teachers Retirement System:</b>	1% Decrease 6.50%	Current Rate 7.50%	1% Increase 8.50%
	<hr/>	<hr/>	<hr/>
School District's Proportionate Share of the Net Pension Liability	\$ 600,482,839	\$ 359,724,288	\$ 161,326,989
	<hr/>	<hr/>	<hr/>
<b>Employees' Retirement System:</b>	1% Decrease 6.30%	Current Rate 7.30%	1% Increase 8.30%
	<hr/>	<hr/>	<hr/>
School District's Proportionate Share of the Net Pension Liability	\$ -	\$ -	\$ -
	<hr/>	<hr/>	<hr/>

**Pension plan fiduciary net position:** Detailed information about the pension plan's fiduciary net position is available in the separately issued TRS, ERS and PSERS financial report which is publicly available at [www.trsga.com/publications](http://www.trsga.com/publications) and <http://www.ers.ga.gov/financials>.

**Payables to the pension plan:** At June 30, 2019, the School District reported a payable in the amount of \$5,365,329 to the TRS plan for the employee and employer contributions attributable to June of 2019.

**DEFINED CONTRIBUTION PLAN**

In August 2001, Cherokee County Board of Education adopted the CCSD 403(b) pension plan for the group of employees covered under the Public School Employees' Retirement System (PSERS). Recognizing that PSERS was a limited defined contribution and defined benefit plan which did not provide for an adequate retirement for this group of employees, it was the Board's desire to supplement the retirement savings of this group.

The Board selected VALIC as the provider of the CCSD 403(b) plan. For each employee covered under PSERS, the Board began contributing to the plan an amount equal to \$.50 for each \$1.00 of employee contributions up to four percent of the employee's regular earnings.

An employee becomes vested in employer contributions in accordance with the following schedule:

**CHEROKEE COUNTY SCHOOL DISTRICT**

Notes to the Basic Financial Statements

June 30, 2019

0-35 months of service:	0%
36-47 months of service:	50%
48-59 months of service:	75%
60+ months of service:	100%

Employees who have already completed five years of service at the time of enrollment are immediately vested upon enrollment. Employees at all times are 100% vested in employee contributions.

Funds accumulated through employer contributions are only available to the employee upon termination of employment or by achieving normal retirement age as determined by the Internal Revenue Service. If an employee terminates employment prior to achieving vested status, funds contributed by CCSD on behalf of the non-vested employee are credited back to the Board.

Employer contributions for the current fiscal year and the preceding two fiscal years are as follows:

<u>Fiscal Year</u>	<u>Percentage Contributed</u>	<u>Required Contribution</u>
2019	100%	\$ 215,560
2018	100%	190,396
2017	100%	176,384

**Note 14: PRIOR YEAR DEFEASEMENT OF DEBT**

In prior years, the School District defeased certain general obligation bonds by placing the proceeds of new bonds in an irrevocable trust to provide for all future debt service payments on the old bonds. Accordingly, the trust account assets and the liability for the defeased bonds are not included in the School District's basic financial statements. At June 30, 2019, \$44,880,000 of bonds outstanding are considered defeased.

**Note 15: TAX ABATEMENTS**

The public purpose of the Cherokee County Development Authority is promoting and expanding for the public good and welfare, industry and trade within Cherokee County and reducing unemployment to the greatest extent possible. The Cherokee County Development Authority, in coordination with Cherokee County government, provide a tax incentive program for qualified industries locating/located in Cherokee County. The purpose of this program is to encourage additional investment from new and existing industries to grow and diversify the tax base and local economy. Eligibility for the tax abatement program is based off the number and quality of jobs created as well as the amount of capital investment. There are claw-back provisions should the recently located company not meet their committed jobs and capital investment numbers.

For the fiscal year ended June 30, 2019, the Cherokee County Development Authority abated property taxes due to the School District that were levied on July 19, 2018 and due on November 15, 2018 totaling \$1,735,733.

# Required Supplementary Information

---



Cherokee County  
School District

**CHEROKEE COUNTY SCHOOL DISTRICT**  
 Required Supplementary Information  
 Schedule of Proportionate Share of Net Pension Liability  
 Teachers Retirement System of Georgia  
 For Years Ended June 30

Year Ended	School District's proportion of the net pension liability	School District's proportionate share of the net pension liability	State of Georgia's proportionate share of the net pension liability associated with the School District	Total	School District's covered payroll	School District's proportionate share of the net pension liability as a percentage of its covered payroll	Plan fiduciary net position as a percentage of the total pension liability
2019	1.94%	\$ 359,724,288	\$ 1,186,863	360,911,151	\$ 231,484,139	155.40%	80.27%
2018	1.92%	356,627,528	1,429,396	358,056,924	221,443,384	161.05%	79.33%
2017	1.93%	397,351,768	1,736,108	399,087,876	212,135,952	187.31%	76.06%
2016	1.92%	291,638,386	1,357,677	292,996,063	203,096,846	143.60%	81.44%
2015	1.88%	237,742,125	1,057,565	238,799,690	192,776,926	123.32%	84.03%

This schedule is intended to show information for 10 years. Additional years will be displayed as they become available.



**CHEROKEE COUNTY SCHOOL DISTRICT**  
**Schedule of Contributions - Teachers Retirement System of Georgia**  
**For the Fiscal Years Ended June 30**

Year Ended	Contractually required contribution	Contributions in relation to the contractually required contribution	Contribution deficiency (excess)	School District's covered payroll	Contribution as a percentage of covered payroll
2019	\$ 49,737,547	\$ 49,737,547	-	\$ 238,692,053	20.84%
2018	38,784,465	38,784,465	-	231,484,139	16.75%
2017	32,062,007	32,062,007	-	221,443,384	14.48%
2016	30,323,698	30,323,698	-	212,135,952	14.29%
2015	26,600,262	26,600,262	-	203,096,846	13.10%
2014	23,551,556	23,551,556	-	192,776,926	12.22%

This schedule is intended to show information for 10 years. Additional years will be displayed as they become available.

**CHEROKEE COUNTY SCHOOL DISTRICT**  
 Required Supplementary Information  
 Schedule of Proportionate Share of Net Pension Liability  
 Employees' Retirement System of Georgia  
 For the Fiscal Years Ended June 30

Year Ended	School District's proportion of the net pension liability	School District's proportionate share of the net pension liability	School District's covered payroll	School District's proportionate share of the net pension liability as a percentage of covered payroll	Plan fiduciary net position as a percentage of total net pension liability
2019	0.00%	\$ -	\$ -	0.00%	76.68%
2018	0.00%	112,661	68,045	165.57%	76.33%
2017	0.00%	126,823	60,972	208.00%	72.34%
2016	0.00%	-	-	0.00%	0.00%
2015	0.00%	-	-	0.00%	0.00%

This schedule is intended to show information for 10 years. Additional years will be displayed as they become available.

**CHEROKEE COUNTY SCHOOL DISTRICT**  
 Schedule of Contributions - Employees' Retirement System of Georgia  
 For the Fiscal Years Ended June 30

---



---

Year Ended	Contractually required contribution	Contributions in relation to the contractually required contribution	Contribution deficiency (excess)	School District's covered payroll	Contribution as a percentage of covered payroll
2019	\$ -	\$ -	\$ -	\$ -	0.00%
2018	-	-	-	-	0.00%
2017	16,882	16,882	-	68,045	24.81%

This schedule is intended to show information for 10 years. Additional years will be displayed as they become available.

**CHEROKEE COUNT SCHOOL DISTRICT**  
**Schedule of Proportionate Share of Net Pension Liability**  
**Public School Employees Retirement System of Georgia**  
**For the Fiscal Years Ended June 30**

Year Ended	School District's proportion of the net pension liability	School District's proportionate share of the net pension liability	State of Georgia's proportionate share of the net pension liability associated with the School District	Total	School District's covered payroll	School District's proportionate share of the net pension liability as a percentage of its covered payroll	Plan fiduciary net position as a percentage of the total pension liability
2019	0.00%	-	\$ 3,228,085	3,228,085	\$ 9,967,544	N/A	85.26%
2018	0.00%	-	2,850,834	2,850,834	10,091,040	N/A	85.69%
2017	0.00%	-	3,719,948	3,719,948	8,638,876	N/A	81.00%
2016	0.00%	-	2,375,349	2,375,349	8,399,160	N/A	87.00%
2015	0.00%	-	1,997,884	1,997,884	8,408,080	N/A	88.29%

This schedule is intended to show information for 10 years. Additional years will be displayed as they become available.

**CHEROKEE COUNTY SCHOOL DISTRICT**  
 Required Supplementary Information  
 Schedule of Proportionate Share of Net Pension Liability  
 School OPEB Fund  
 For the Years Ended June 30

---

Year Ended	School District's proportion of the net OPEB liability	School District's proportionate share of the net OPEB liability (asset)	State of Georgia's proportionate share of the net OPEB liability associated with the School District	Total	School District's covered payroll	School District's proportionate share of the net OPEB liability as a percentage of its covered payroll	Plan fiduciary net position as a percentage of the total OPEB liability
2019	2.20%	\$ 279,928,576	\$ -	279,928,576	\$ 201,098,305	N/A	2.93%
2018	2.18%	306,413,183	-	306,413,183	153,601,363	N/A	1.61%

This schedule is intended to show information for 10 years. Additional years will be displayed as they become available.

**CHEROKEE COUNTY SCHOOL DISTRICT**  
 Required Supplementary Information  
 Schedule of Contributions - School OPEB Fund  
 For the Years Ended June 30

---

<u>Year Ended</u>	<u>Contractually required contribution</u>	<u>Contributions in relation to the contractually required contribution</u>	<u>Contribution deficiency (excess)</u>	<u>School District's covered payroll</u>	<u>Contribution as a percentage of covered payroll</u>
2019	\$ 12,015,177	12,015,177	-	\$ 201,721,966	5.96%
2018	11,415,245	11,415,245	-	201,098,305	5.68%

This schedule is intended to show information for 10 years. Additional years will be displayed as they become available.

**CHEROKEE COUNTY SCHOOL DISTRICT**  
Notes to the Required Supplementary Information  
For the Fiscal Year Ended June 30, 2019

---

**Teachers Retirement System**

**Changes of assumptions:** On November 18, 2015, the TRS Board adopted recommended changes to the economic and demographic assumptions utilized by the System. Primary among the changes were the updates to rates of mortality, retirement, disability, withdrawal and salary increases. The expectation of retired life mortality was changed to RP 2000 White Collar Mortality Table with future mortality improvement projected to 2025 with the Society of Actuaries' projection scale BB (set forward one year for males).

In 2010 and later, the expectation of retired life mortality was changed to the RP 2000 Mortality Tables rather than the 1994 Group Annuity Mortality Table, which was used prior to 2010. In 2010, rates of withdrawal, retirement, disability and mortality were adjusted to more closely reflect actual experience. In 2010, assumed rates of salary increase were adjusted to more closely reflect actual and anticipated experience.

**Employees' Retirement System**

**Changes of assumptions:** On March 15, 2018, the PSERS Board adopted a new funding policy. Because of this new funding policy, the assumed investment rate of return was reduced from 7.50% to 7.40% for the June 30, 2017 actuarial valuation. In addition, based on the Board's new funding policy, the assumed investment rate of return was further reduced by 0.10% from 7.40% to 7.30% as of the June 30, 2018 measurement date.

On December 17, 2015, the PSERS Board adopted recommended changes to the economic and demographic assumptions utilized by the System. Primary among the changes were the updates to rates of mortality, retirement, disability, withdrawal and salary increases.

**Public School Employees Retirement System**

**Changes of assumptions:** On March 15, 2018, the PSERS Board adopted a new funding policy. Because of this new funding policy, the assumed investment rate of return was reduced from 7.50% to 7.40% for June 30, 2017 actuarial valuation. In addition, based on the Board's new funding policy, the assumed investment rate of return was further reduced by 0.10% from 7.40% to 7.30% as of the June 30, 2018 measurement date.

On December 17, 2015, the PSERS Board adopted recommended changes to the economic and demographic assumptions utilized by the System. Primary among the changes were the updates to rates of mortality, retirement and withdrawal. The expectation of retired life mortality was changed to the RP 2000 Blue Collar Mortality Table projected to 2025 with projection scale BB (set forward 3 years for males and 2 years for females).

In 2010 and later, the expectation of retired life mortality was changed to the RP 2000 Mortality Tables rather than the 1994 Group Annuity Mortality Table, which was used prior to 2010. In 2010, rates of withdrawal, retirement, disability and mortality were adjusted to more closely reflect actual experience.

**School OPEB Fund**

**Changes of benefit terms:** In June 30, 2010 actuarial valuation, there was a change of benefit terms to require Medicare-eligible recipients to enroll in a Medicare Advantage plan to receive the State subsidy.

**Changes in assumptions:** In the revised June 30, 2017 actuarial valuation, there was a change relating to employee allocation. Employees were previously allocated based on their Retirement System membership, and currently employees are allocated based on their current employer payroll location. Additionally, there were changes to the discount rate and an increase in the investment rate of return due to a longer term investment strategy.

In the June 30, 2015 actuarial valuation, decremental and underlying inflation assumptions were changed to reflect the Retirement Systems' experience studies.

In the June 30, 2012 actuarial valuation, a data audit was performed and data collection procedures and assumptions were changed.

# Combining and Individual Fund Financial Statements and Schedules

---



Cherokee County  
School District



**CHEROKEE COUNTY SCHOOL DISTRICT**  
Statement of Changes in Fiduciary Assets and Liabilities  
Agency Funds  
June 30, 2019

---



---

	<u>Balance</u> <u>July 1, 2018</u>	<u>Additions</u>	<u>Deletions</u>	<u>Balance</u> <u>June 30, 2019</u>
<b>Assets - Cash</b>	\$ <u>494,428</u>	\$ <u>1,130,422</u>	\$ <u>1,081,229</u>	\$ <u>543,621</u>
<b>Liabilities - due to others</b>	\$ <u>494,428</u>	\$ <u>1,130,422</u>	\$ <u>1,081,229</u>	\$ <u>543,621</u>

The accompanying notes are an integral part of this financial statement.

# Special Reports Section

---



Cherokee County  
School District

**CHEROKEE COUNTY SCHOOL DISTRICT**  
Schedule of Expenditures of Educational  
Local Option Sales Tax Proceeds  
For the Fiscal Year Ended June 30, 2019

**2017 ELOST**

<u>PROJECT</u>	<u>ORIGINAL ESTIMATED COST <sup>(1)</sup></u>	<u>CURRENT ESTIMATED COSTS <sup>(2)</sup></u>	<u>AMOUNT EXPENDED IN CURRENT YEAR <sup>(3)</sup></u>	<u>AMOUNT EXPENDED IN PRIOR YEARS <sup>(3)</sup></u>	<u>TOTAL COMPLETION COST</u>	<u>ESTIMATED COMPLETION DATE</u>
Payment of a portion of the principal and interest on the Series 2009, Series 2010, Series 2012, Series 2014, Series 2015, Series 2016 and Series 2017 General Obligation Bonds previously issued along with acquiring, constructing, and equipping new school, administrative, athletic and other buildings and facilities; adding to, renovating, repairing, improving and equipping existing school, administrative, athletic and other buildings and facilities; acquiring, installing, and equipping portable classrooms; acquiring buses and other vehicles; acquiring, installing, and implementing system-wide technology improvements; acquiring land; and acquiring any property useful or desirable both real and personal.	\$ 210,000,000	\$ 210,000,000	\$ 28,726,047	\$ 16,236,111	\$ 44,962,158	Ongoing
Totals	<u>\$ 210,000,000</u>	<u>\$ 210,000,000</u>	<u>\$ 28,726,047</u>	<u>\$ 16,236,111</u>	<u>\$ 44,962,158</u>	

- (1) The School District's original cost estimate as specified in the resolution calling for the imposition of the Local Option Sales Tax.
- (2) The School District's current estimate of total cost for the projects. Includes all cost from project inception to completion.
- (3) The voters of Cherokee County approved the imposition of a 1% sales tax to fund the above projects and retire associated debt. Amounts expended for these projects may include sales tax proceeds, state and local property taxes and/or other funds over the life of the projects.

This schedule is prepared on the modified accrual basis of accounting.

# Statistical Section

---



Cherokee County  
School District

**CHEROKEE COUNTY SCHOOL DISTRICT**  
**Net Position By Component**  
**Last Ten Fiscal Years**  
**(Accrual Basis of Accounting)**

	<u>2010</u>	<u>2011</u>	<u>2012</u>	<u>2013</u>	<u>2014</u>	<u>2015</u>	<u>2016</u>	<u>2017</u>	<u>2018</u>	<u>2019</u>
Governmental Activities										
Net Investment in Capital Assets	\$ 167,841,613	\$ 250,543,819	\$ 198,889,424	\$ 209,490,954	\$ 171,145,712	\$ 175,561,454	\$ 135,165,188	\$ 144,651,983	\$ 110,975,930	\$ 114,343,646
Restricted	104,524,173	27,577,489	69,142,615	24,271,421	37,776,874	84,492,945	58,795,136	52,384,239	90,376,401	87,138,047
Unrestricted	<u>34,976,202</u>	<u>38,480,335</u>	<u>28,229,850</u>	<u>36,878,982</u>	<u>38,528,714</u>	<u>(306,529,001)</u>	<u>(226,709,526)</u>	<u>(251,624,907)</u>	<u>(558,790,206)</u>	<u>(528,724,168)</u>
Total Governmental Activities										
Net Position	<u>\$ 307,341,988</u>	<u>\$ 316,601,643</u>	<u>\$ 296,261,889</u>	<u>\$ 270,641,357</u>	<u>\$ 247,451,300</u>	<u>\$ (46,474,602)</u>	<u>\$ (32,749,202)</u>	<u>\$ (54,588,685)</u>	<u>\$ (357,437,875)</u>	<u>\$ (327,242,475)</u>

**CHEROKEE COUNTY SCHOOL DISTRICT**  
**Changes In Net Position**  
**Last Ten Fiscal Years**  
**(Accrual Basis of Accounting)**

	2010	2011	2012	2013	2014	2015	2016	2017	2018	2019
<b>Expenses</b>										
Governmental Activities:										
Instructional Services	\$ 244,240,005	\$ 229,912,480	\$ 224,253,725	\$ 255,242,260	\$ 250,405,679	\$ 263,918,820	\$ 268,277,389	\$ 304,154,371	\$ 307,545,475	\$ 299,191,976
Support Services:										
Pupil Services	12,383,247	12,614,695	12,632,830	13,016,180	14,141,755	15,035,928	15,585,477	18,457,952	18,963,817	19,698,979
Improvement of Instructional Services	6,273,468	18,128,121	17,786,353	7,113,092	8,055,042	8,139,358	10,728,571	12,314,950	13,800,487	14,989,865
Educational Media Services	5,636,537	4,701,743	4,952,041	4,428,764	4,349,943	4,349,249	4,223,845	4,341,011	4,714,223	4,591,369
General Administration	3,186,746	3,062,324	3,968,602	6,541,184	4,256,475	4,625,077	4,417,958	4,639,969	4,665,197	4,716,707
School Administration	18,214,381	20,872,771	19,865,744	19,650,890	19,786,635	18,605,572	20,992,806	22,616,547	25,260,871	24,991,512
Support Services - Business	1,959,238	1,949,435	1,873,681	2,173,043	3,082,503	2,173,419	2,307,908	3,596,089	2,792,043	3,070,305
Maintenance and Operation	22,886,999	24,283,934	31,471,536	21,532,537	24,186,081	19,651,349	24,048,694	25,171,126	25,712,187	26,885,475
Student Transportation Services	16,357,565	17,779,976	17,516,187	16,780,714	17,938,166	17,972,099	18,706,517	22,969,715	24,470,133	28,050,941
Support Services - Central	3,895,301	3,256,299	3,176,410	3,239,231	3,346,549	3,691,062	4,192,381	4,228,809	5,144,624	4,844,465
Other Support Services	2,489,980	3,613,012	4,246,668	279,915	330,053	295,785	326,095	58,350	-	-
Operations of Noninstructional Services:										
Community Service Operations	1,788,949	1,784,746	1,890,012	1,886,019	24,802	23,820	1,974,761	2,001,908	2,133,240	2,003,057
School Nutrition	13,842,322	14,351,126	15,726,874	15,467,829	15,310,576	16,012,913	16,221,840	16,377,079	16,709,035	16,652,579
Facilities Acquisition and Construction	24,976,907	-	-	-	-	-	-	-	-	-
Interest on Long-term Debt	18,495,387	17,633,165	14,370,208	15,992,704	17,569,037	17,687,324	19,922,135	22,271,369	14,683,311	16,557,350
<b>Total Governmental Activities Expenses</b>	<b>\$ 396,627,032</b>	<b>\$ 373,943,827</b>	<b>\$ 373,730,871</b>	<b>\$ 383,344,362</b>	<b>\$ 382,783,296</b>	<b>\$ 392,181,775</b>	<b>\$ 411,926,377</b>	<b>\$ 463,199,245</b>	<b>\$ 466,594,643</b>	<b>\$ 466,244,580</b>
<b>Program Revenues</b>										
Governmental Activities:										
Charges for Services:										
Instructional Services	\$ 13,412,695	\$ 10,970,071	\$ 10,424,061	\$ 11,092,020	\$ 11,665,861	\$ 11,699,841	\$ 12,482,920	\$ 13,209,819	\$ 12,515,944	\$ 13,543,252
General Administration	-	-	18,995	-	24,473	61,156	67,686	55,650	-	-
Support Services - Business	-	-	416,051	3,868,800	512,126	282,082	177,618	155,831	-	-
Maintenance and Operation	-	-	-	-	-	-	-	-	227,793	253,023
Community Service Operations	-	-	-	2,412,222	-	-	-	-	-	-
School Nutrition	6,996,515	6,641,791	6,639,408	6,439,499	6,190,901	6,284,294	6,544,616	7,135,331	7,042,849	7,449,816
Operating Grants and Contributions	176,815,801	194,856,735	178,815,914	185,238,986	182,302,687	206,318,462	213,577,923	221,016,968	233,948,283	241,765,291
Capital Grants and Contributions	832,886	5,869,397	4,733,176	14,623,703	4,914,187	10,288,788	8,650,087	2,079,785	4,600,742	7,441,006
<b>Total Governmental Activities Program Revenues</b>	<b>\$ 198,057,897</b>	<b>\$ 218,337,994</b>	<b>\$ 201,047,605</b>	<b>\$ 223,675,230</b>	<b>\$ 205,610,235</b>	<b>\$ 234,934,623</b>	<b>\$ 241,500,850</b>	<b>\$ 243,653,384</b>	<b>\$ 258,335,611</b>	<b>\$ 270,452,388</b>
<b>Total Governmental Activities Net (Expense)</b>	<b>\$ (198,569,135)</b>	<b>\$ (155,605,833)</b>	<b>\$ (172,683,266)</b>	<b>\$ (159,669,132)</b>	<b>\$ (177,173,061)</b>	<b>\$ (157,247,152)</b>	<b>\$ (170,425,527)</b>	<b>\$ (219,545,861)</b>	<b>\$ (208,259,032)</b>	<b>\$ (195,792,192)</b>
<b>General Revenues and Other Changes in Net Position</b>										
Governmental Activities:										
Taxes:										
Property, Levied for General Purposes	\$ 139,983,508	\$ 132,517,956	\$ 125,631,535	\$ 119,504,969	\$ 115,437,762	\$ 128,425,998	\$ 143,581,684	\$ 156,267,252	\$ 158,505,094	\$ 169,863,066
Property, Levied for Debt Service	2,981,836	2,760,023	2,530,486	2,413,668	2,440,652	277,364	266,606	288,004	4,120,032	4,504,024
Educational Local Option Sales Tax	28,374,227	25,865,204	30,332,685	30,330,461	31,148,497	33,612,150	34,898,795	36,129,915	38,528,529	42,354,080
Other Tax	90,905	111,564	55,369	-	3,795,929	4,625,155	-	-	7,003,050	6,348,184
Unrestricted Grants and Contributions	-	-	837,491	151,814	-	969,255	4,492,797	4,153,299	-	-
Restricted Investment Earnings	-	-	144,910	166,183	379,995	431,733	555,927	623,996	945,547	-
Unrestricted Investment Earnings	378,568	105,477	-	-	14,958	27,131	82,046	183,067	467,627	1,132,482
Miscellaneous	1,262,619	744,811	-	-	1,472,405	-	-	-	1,492,706	1,785,756
Gain(Loss) on Asset Disposal	253,631	-	-	62,175	8,912	(243,336)	273,072	60,845	(868,961)	-
<b>Total Governmental Activities</b>	<b>\$ 173,325,294</b>	<b>\$ 162,105,035</b>	<b>\$ 159,532,476</b>	<b>\$ 152,629,270</b>	<b>\$ 154,699,110</b>	<b>\$ 168,125,450</b>	<b>\$ 184,150,927</b>	<b>\$ 197,706,378</b>	<b>\$ 210,193,624</b>	<b>\$ 225,987,592</b>
<b>Change in Net Position</b>										
Total Governmental Activities	\$ (25,243,841)	\$ 6,499,202	\$ (13,150,790)	\$ (7,039,862)	\$ (22,473,951)	\$ 10,878,298	\$ 13,725,400	\$ (21,839,483)	\$ 1,934,592	\$ 30,195,400

Note: Governmental Activities are the only activities of the Primary Government

**CHEROKEE COUNTY SCHOOL DISTRICT**  
**Fund Balances of Governmental Funds**  
**Last Ten Fiscal Years**  
**(Modified Accrual Basis of Accounting)**

	<u>2010</u>	<u>2011</u>	<u>2012</u>	<u>2013</u>	<u>2014</u>	<u>2015</u>	<u>2016</u>	<u>2017</u>	<u>2018</u>	<u>2019</u>
General Fund										
Nonspendable	\$ -	\$ 401,447	\$ 304,618	\$ -	\$ 272,721	\$ 716,582	\$ 730,560	\$ 797,246	\$ 750,379	\$ 644,424
Restricted	-	-	-	-	-	948,100	-	-	-	-
Committed	-	-	-	-	-	8,075,632	8,622,378	9,248,303	9,596,893	12,137,457
Assigned	-	4,205,106	-	-	-	-	-	-	-	-
Unassigned	-	30,770,934	26,470,133	28,089,633	25,467,356	39,209,291	44,671,277	46,279,801	50,465,938	54,773,428
Reserved	518,503	-	-	-	-	-	-	-	-	-
Unreserved	<u>33,590,487</u>	-	-	-	-	-	-	-	-	-
Total General Fund	<u>\$ 34,108,990</u>	<u>\$ 35,377,487</u>	<u>\$ 26,774,751</u>	<u>\$ 28,089,633</u>	<u>\$ 25,740,077</u>	<u>\$ 48,949,605</u>	<u>\$ 54,024,215</u>	<u>\$ 56,325,350</u>	<u>\$ 60,813,210</u>	<u>\$ 67,555,309</u>
All Other Governmental Funds										
Nonspendable	\$ -	\$ 344,312	\$ 299,790	\$ 337,702	\$ 329,765	\$ -	\$ -	\$ -	\$ -	\$ -
Restricted	-	104,858,111	69,142,615	68,433,335	67,584,818	83,544,845	58,788,413	52,384,239	90,333,208	87,098,716
Committed	-	7,023,643	7,283,442	7,024,264	7,757,858	-	-	-	-	-
Unassigned	-	(116,216)	-	-	-	-	-	-	-	-
Reserved	104,880,553	-	-	-	-	-	-	-	-	-
Unreserved	<u>3,842,359</u>	-	-	-	-	-	-	-	-	-
Total All Other Governmental Funds	<u>\$ 108,722,912</u>	<u>\$ 112,226,066</u>	<u>\$ 76,725,847</u>	<u>\$ 75,795,301</u>	<u>\$ 75,672,441</u>	<u>\$ 83,544,845</u>	<u>\$ 58,788,413</u>	<u>\$ 52,384,239</u>	<u>\$ 90,333,208</u>	<u>\$ 87,098,716</u>

**CHEROKEE COUNTY SCHOOL DISTRICT**  
**Changes in Fund Balances of Governmental Funds**  
**Last Ten Fiscal Years (Modified Accrual Basis of Accounting)**

	2010	2011	2012	2013	2014	2015	2016	2017	2018	2019
<b>Revenues</b>										
Local Sources	\$ 186,313,132	\$ 164,872,023	\$ 186,715,705	\$ 175,240,513	\$ 174,908,700	\$ 187,039,576	\$ 199,359,911	\$ 214,388,005	\$ 228,385,473	\$ 246,148,867
State Funds	138,740,801	183,088,305	153,824,014	177,263,453	160,644,859	190,486,206	198,705,638	199,131,369	211,496,126	218,212,132
Federal Funds	37,105,970	34,643,647	21,599,195	22,065,148	23,850,274	27,145,626	26,442,730	24,215,467	23,111,998	23,857,002
Investment Earnings	378,568	789,490	221,796	241,262	394,952	458,864	637,972	807,064	1,413,174	3,117,625
Miscellaneous	6,996,515	-	-	-	2,873,240	-	-	2,948,053	3,915,065	5,113,946
<b>Total Revenues</b>	<b>369,534,986</b>	<b>383,393,465</b>	<b>362,360,710</b>	<b>374,810,376</b>	<b>362,672,025</b>	<b>405,130,272</b>	<b>425,146,251</b>	<b>441,489,958</b>	<b>468,321,836</b>	<b>496,449,572</b>
<b>Expenditures</b>										
Instructional Services	230,430,068	211,396,899	220,448,351	236,435,348	236,061,634	257,718,118	261,187,809	279,380,706	284,762,125	290,809,416
Pupil Services	12,380,477	12,614,695	12,632,830	13,016,180	14,151,619	15,512,529	16,038,553	17,874,635	18,577,288	20,221,099
Improvement of Instructional Services	6,271,686	18,128,121	17,786,353	7,113,092	8,063,646	8,395,425	11,042,810	11,957,788	13,570,161	15,341,099
Educational Media Services	5,634,983	4,701,743	4,952,041	4,428,764	4,350,082	4,508,107	4,363,287	4,192,494	4,616,997	4,718,229
General Administration	2,674,002	2,369,849	2,243,598	5,962,426	3,816,469	4,036,345	3,735,252	3,844,437	3,823,016	3,978,982
School Administration	18,179,357	20,829,774	19,807,593	19,590,374	19,695,117	19,263,667	21,604,006	22,387,656	24,482,989	25,338,378
Support Services - Business	1,934,625	1,905,287	1,829,533	2,128,895	2,015,498	2,204,431	2,337,761	2,716,300	2,688,671	3,100,280
Maintenance and Operation	22,743,806	24,149,353	22,015,748	26,509,286	24,789,844	19,691,594	24,044,944	24,881,022	25,345,889	26,735,820
Student Transportation Services	13,506,867	14,954,266	14,511,835	14,365,864	15,788,454	16,999,251	18,467,658	21,380,221	22,805,197	26,841,290
Community Services	1,788,456	1,784,746	1,890,012	1,886,019	26,684	26,043	1,974,761	2,001,908	2,133,240	2,003,057
School Nutrition Program	13,822,742	14,335,400	15,716,145	15,457,698	15,320,006	16,018,774	16,274,962	16,263,620	16,261,941	16,587,199
Other Support Services	31,720,753	6,869,311	7,423,078	3,519,146	3,678,212	4,068,800	4,589,366	4,139,123	5,108,539	4,907,557
Facilities Acquisition and Construction	48,498,809	46,941,008	32,343,332	23,791,145	30,417,113	32,819,163	21,055,286	17,862,414	8,718,559	22,129,457
Debt Service										
Principal Retirement	13,156,279	14,781,853	17,505,000	19,770,000	16,150,000	16,230,000	17,635,000	19,210,000	21,575,000	9,420,000
Interest and Fees	16,844,973	16,788,011	15,336,985	15,870,743	18,073,797	19,183,376	20,673,022	19,437,238	19,925,553	20,880,402
Issuance Costs	-	521,415	-	-	712,137	974,949	512,472	325,591	448,703	-
<b>Total Expenditures</b>	<b>439,587,883</b>	<b>413,071,731</b>	<b>406,442,434</b>	<b>409,844,980</b>	<b>413,110,312</b>	<b>437,650,572</b>	<b>445,536,949</b>	<b>467,855,162</b>	<b>474,843,868</b>	<b>493,012,265</b>
Excess of Revenues Over (Under) Expenditures	(70,052,897)	(29,678,266)	(44,081,724)	(35,034,604)	(50,438,287)	(32,520,300)	(20,390,698)	(26,365,204)	(6,522,032)	3,437,307
<b>Other Financing Sources (Uses)</b>										
Transfers In	415,364	298,570	1,628,680	2,589,783	335,661	18,150,889	138,578	13,421	5,889,760	-
Transfers Out	(415,364)	(298,570)	(1,628,680)	(2,589,783)	(335,661)	(18,150,889)	(138,578)	(13,421)	(5,889,760)	-
Bond Issuance	101,255,000	43,525,000	-	35,930,000	81,315,000	108,960,000	42,685,000	18,175,000	39,685,000	-
Bond Premium	4,098,874	285,248	-	7,461,201	13,311,060	23,515,260	8,766,142	4,023,835	6,663,214	-
Proceeds From Sale of Capital Assets	262,530	49,400	94,985	62,175	226,518	38,144	196,403	63,330	2,610,647	70,300
Payment to Bond Escrow Agent	(615,395)	(3,715,362)	-	-	(40,703,827)	(70,387,328)	(50,938,669)	-	-	-
<b>Total Other Financing Sources (Uses)</b>	<b>105,001,009</b>	<b>40,144,286</b>	<b>94,985</b>	<b>43,453,376</b>	<b>54,148,751</b>	<b>62,126,076</b>	<b>708,876</b>	<b>22,262,165</b>	<b>48,958,861</b>	<b>70,300</b>
<b>Net Change in Fund Balances</b>	<b>\$ 34,948,112</b>	<b>\$ 10,466,020</b>	<b>\$ (43,986,739)</b>	<b>\$ 8,418,772</b>	<b>\$ 3,710,464</b>	<b>\$ 29,605,776</b>	<b>\$ (19,681,822)</b>	<b>\$ (4,103,039)</b>	<b>\$ 42,436,829</b>	<b>\$ 3,507,607</b>
Non-Capital Expenditures	333,444,796	370,965,744	374,099,102	386,053,835	379,433,643	401,748,228	423,147,045	449,992,748	466,125,309	470,882,808
Capitalized Expenditures	106,143,087	42,105,987	32,343,332	23,791,145	33,676,669	35,902,344	22,389,904	17,862,414	8,718,559	22,129,457
<b>Total Expenditures</b>	<b>439,587,883</b>	<b>413,071,731</b>	<b>406,442,434</b>	<b>409,844,980</b>	<b>413,110,312</b>	<b>437,650,572</b>	<b>445,536,949</b>	<b>467,855,162</b>	<b>474,843,868</b>	<b>493,012,265</b>
Debt Service as a Percentage of Non-Capitalized Expenditures	9.0%	8.7%	8.8%	9.2%	9.2%	9.1%	9.2%	8.7%	9.0%	6.4%



**CHEROKEE COUNTY SCHOOL DISTRICT**  
**Assessed Value and Estimated Actual Value**  
**Last Ten Fiscal Years**

Fiscal Year <sup>3</sup>	Residential Property	Commercial Property	Industrial Property	Agricultural Property	Preferential & Conservation Use Property	Utility Property	Motor Vehicles and Mobile Homes <sup>1</sup>	Other Property	Less: Tax Exempt Property	Total Taxable Assessed Value	Total Direct Tax Rate <sup>2</sup>	Estimated Actual Taxable Value	Annual Percentage Change
2010	5,168,810,680	1,224,749,686	241,412,998	1,203,570,512	348,822,160	151,363,240	662,781,240	279,810	1,469,174,114	7,532,616,212	1.89%	18,831,540,530	-3.77%
2011	4,747,831,128	1,148,108,530	222,552,172	1,088,036,429	309,113,640	146,101,478	581,685,690	3,123,326	1,448,932,993	6,797,619,400	1.99%	16,994,048,500	-9.76%
2012	4,461,226,249	1,084,627,347	207,025,618	1,003,201,600	276,210,080	146,613,177	578,431,040	2,679,521	1,439,817,130	6,320,197,502	1.99%	15,800,493,755	-7.02%
2013	4,069,650,746	1,068,209,415	197,280,131	869,750,160	227,143,440	137,171,378	625,032,150	2,091,836	1,369,698,949	5,826,630,307	1.99%	14,566,575,768	-7.81%
2014	4,199,340,719	1,064,149,402	196,788,435	872,496,502	219,791,440	157,632,680	655,289,690	2,679,124	1,431,414,715	5,936,753,277	1.99%	14,841,883,193	1.89%
2015	4,832,876,519	1,216,647,055	205,104,883	918,398,745	231,497,160	154,919,480	544,063,160	3,336,647	1,623,570,343	6,483,273,306	1.95%	16,208,183,265	9.21%
2016	5,396,734,955	1,266,253,828	211,917,799	1,008,183,024	260,445,760	155,810,960	407,304,844	2,520,952	1,866,128,237	6,843,043,885	1.95%	17,107,609,713	5.55%
2017	5,983,542,756	1,359,167,290	236,563,490	1,060,893,640	269,460,760	158,606,240	314,363,550	2,401,230	2,070,919,374	7,314,079,582	1.95%	18,285,198,955	6.88%
2018	6,603,865,308	1,541,757,711	267,734,818	1,200,231,760	297,671,080	158,861,840	235,689,450	2,777,488	2,318,265,927	7,990,323,528	1.95%	19,975,808,820	9.25%
2019	7,187,264,153	1,651,560,421	304,008,121	1,240,959,696	302,943,520	161,694,720	183,755,428	6,273,203	2,559,918,061	8,478,541,201	1.95%	21,196,353,003	6.11%

Source: State of Georgia Department of Revenue, Tax Digest Consolidation Summary, School, <https://apps.dor.ga.gov/digestconsolidation/default.aspx>

Property in Cherokee County is reassessed annually. The county assesses property at 40 percent of actual value for all types of real and personal property. Estimated actual value is calculated by dividing the assessed value by this percentage.

<sup>1</sup> As of March 1, 2013, only motor vehicles titles prior to March 1, 2013 are subject to ad valorem tax. Motor vehicles titles after that date are subject instead to a one-time state and local title fee. As a result of this change in law, the assessed value of motor vehicles subject to ad valorem tax decreased by approximately \$247.6 million from 2013 to 2015, and the District expects the assessed value of motor vehicles to continue to decrease in future years as motor vehicles subject to ad valorem tax come out of service.

<sup>2</sup> Per \$1,000 of assessed value.

<sup>3</sup> The tax year is one year prior to the fiscal year.

**CHEROKEE COUNTY SCHOOL DISTRICT**  
**Direct and Overlapping Property Tax Rates<sup>2</sup>**  
**Last Ten Fiscal Years**  
**(rate per \$1,000 of assessed taxable value)**

	2010	2011	2012	2013	2014	2015	2016	2017	2018	2019
<b>Direct-School District:</b>										
Maintenance and operations <sup>3</sup>	18.450	19.450	19.450	19.450	19.450	19.450	19.450	19.450	18.950	18.950
Debt service	0.400	0.400	0.400	0.400	0.400	0.000	0.000	0.000	0.500	0.500
<b>Total Direct-School District</b>	<b>18.850</b>	<b>19.850</b>	<b>19.850</b>	<b>19.850</b>	<b>19.850</b>	<b>19.450</b>	<b>19.450</b>	<b>19.450</b>	<b>19.450</b>	<b>19.450</b>
<b>Overlapping:<sup>1</sup></b>										
Cherokee County	4.381	4.720	5.365	5.825	5.798	5.728	5.728	5.680	5.483	5.366
Fire District	2.742	2.950	3.129	3.394	3.373	3.436	3.436	3.374	3.298	3.269
Parks	0.580	0.628	0.641	0.780	0.776	0.744	0.744	0.609	0.581	0.503
State of Georgia	0.250	0.250	0.250	0.200	0.150	0.100	0.050	0.000	0.000	0.000
<b>Total Overlapping</b>	<b>7.953</b>	<b>8.548</b>	<b>9.385</b>	<b>10.199</b>	<b>10.097</b>	<b>10.008</b>	<b>9.958</b>	<b>9.663</b>	<b>9.362</b>	<b>9.138</b>
<b>Additional Overlapping Rates:<sup>1</sup></b>										
City of Ball Ground	5.194	5.194	5.194	5.194	6.000	5.375	5.139	4.916	8.037	8.269
City of Canton	6.800	6.800	6.800	6.800	6.800	6.196	5.850	5.600	5.400	5.400
City of Holly Springs	7.607	8.098	8.598	9.449	9.373	8.936	8.751	8.460	8.148	7.999
City of Mountain Park	11.780	11.780	10.780	10.780	10.780	13.330	13.220	12.900	12.880	8.320
City of Nelson	1.546	1.538	1.538	1.546	1.250	1.124	1.085	1.289	4.256	4.178
City of Waleska	0.000	0.000	3.983	4.278	3.550	4.250	4.250	4.285	4.220	3.655
City of Woodstock	6.530	7.016	7.292	7.889	7.889	7.250	6.992	6.992	6.808	6.720

<sup>1</sup> Overlapping rates are those of governments that overlap the School District's geographic boundaries.

<sup>2</sup> The tax year is one year prior to the fiscal year.

<sup>3</sup> The legal limit is 20 mills.

Source: Cherokee County Tax Commissioner (Cherokee County Board of Commissioners FY18 CAFR), Georgia Department of Revenue

**CHEROKEE COUNTY SCHOOL DISTRICT**

Principal Property Taxpayers  
Current and Nine Years Ago

Taxpayer	December 31, 2018			December 31, 2009		
	Taxable Assessed Value	Rank	Percentage of Total Taxable Assessed Value	Taxable Assessed Value	Rank	Percentage of Total Taxable Assessed Value
Georgia Power	\$ 55,026,649	1	0.65%	\$ 33,676,224	1	0.45%
Atlanta Gas Light Company	36,345,444	2	0.43%	30,289,795	2	0.40%
Cobb EMC	23,958,829	3	0.28%	21,781,325	3	0.29%
Bill Fund V Woodstock LLC	21,180,320	4	0.25%			
Universal Alloy Corporation	21,180,025	5	0.25%			
Cole Mountain Market Place	21,105,200	6	0.25%			
MP The Palmer, LLC	19,045,000	7	0.22%			
Georgia Transmission	17,811,660	8	0.21%	14,270,668	6	0.19%
SOF Park 9 Owner LP	15,226,520	9	0.18%			
Laurelwood Drive Owner	<u>15,041,600</u>	10	0.18%			
Bell South Telecom				13,492,798	9	0.18%
AllTel				16,082,581	5	0.21%
Canton Marketplace, LLC				14,157,840	7	0.19%
CH Realty IV / Woodstock, LLC				16,651,200	4	0.22%
DDRM Riverstone Plaza LLC				13,575,200	8	0.18%
Forestar Real Estate Group, Inc.				<u>11,828,120</u>	10	0.16%
Totals	<u>\$ 245,921,247</u>		<u>2.90%</u>	<u>\$ 185,805,751</u>		<u>2.47%</u>

Information is available only by calendar year; therefore, data reported is for December 31, 2018 and December 31, 2009  
Source: Cherokee County Tax Commissioner

**CHEROKEE COUNTY SCHOOL DISTRICT**  
Property Tax Levies and Collections of Property by Type  
Last Ten Fiscal Years

Fiscal Year	Taxes Levied <sup>1</sup>	Collected Within the Fiscal Year of the Levy <sup>2</sup>		Collections In Subsequent Years <sup>3</sup>	Total Collections to Date	
		Amount <sup>1</sup>	Percentage of Levy		Amount <sup>1</sup>	Percentage of Levy
2010	142,018,249	128,153,706	90.24%	10,323,243	138,476,949	97.51%
2011	129,519,549	125,668,016	97.03%	2,662,361	128,330,377	99.08%
2012	125,172,134	114,358,307	91.36%	2,666,370	117,024,677	93.49%
2013	115,386,331	105,622,442	91.54%	2,252,645	107,875,087	93.49%
2014	117,580,492	105,808,883	89.99%	1,456,169	107,265,052	91.23%
2015	125,807,610	114,268,043	90.83%	1,645,769	115,913,812	92.14%
2016	132,824,435	123,875,257	93.26%	1,301,749	125,177,006	94.24%
2017	141,975,756	135,094,205	95.15%	1,207,535	136,301,740	96.00%
2018	155,152,909	146,572,095	94.47%	1,802,704	148,374,799	95.63%
2019	164,622,834	159,028,319	96.60%	723,376	159,751,695	97.04%

Source: Cherokee County Tax Commissioner

<sup>1</sup> Relates to preceding calendar year tax digest.

<sup>2</sup> Amounts shown are net of collection fees of 2.50% paid to Cherokee County for fiscal years 2009 through 2013, 2.30% paid to Cherokee County for fiscal year 2014, 2.10% paid to Cherokee County for fiscal year 2015, and 2.00% paid to Cherokee County for fiscal years 2016 through 2018.

<sup>3</sup> 2019 Collections are through November 30, 2019.

**CHEROKEE COUNTY SCHOOL DISTRICT**  
 Ratios of Total Debt Outstanding By Type  
 Last Ten Fiscal Years

Fiscal Year	Governmental Activities			Total Primary Government	Annual Personal Income (thousands) <sup>1</sup>	Estimated Population	Debt as a Percentage of Personal Income	Total Debt Per Capita
	General Obligation Bonds	Bond Premiums	Capital Leases					
2010	342,380,000	4,831,204	1,095,099	348,306,303	7,621,819	212,232	4.57%	\$ 1,641
2011	375,503,204	-	558,246	376,061,450	7,822,541	215,189	4.81%	\$ 1,748
2012	350,705,000	7,998,523	-	358,703,523	8,369,366	217,820	4.29%	\$ 1,647
2013	366,865,000	14,505,760	-	381,370,760	8,907,672	220,773	4.28%	\$ 1,727
2014	396,530,000	25,594,630	-	422,124,630	9,132,064	224,487	4.62%	\$ 1,880
2015	425,260,000	45,515,819	-	470,775,819	9,855,842	230,396	4.78%	\$ 2,043
2016	405,430,000	49,308,763	-	454,738,763	10,709,537	235,424	4.25%	\$ 1,932
2017	404,395,000	48,463,109	-	452,858,109	11,548,667	241,600	3.92%	\$ 1,874
2018	422,505,000	48,598,225	-	471,103,225	12,147,718	247,573	3.88%	\$ 1,903
2019	413,085,000	41,788,073	-	454,873,073	12,996,343	254,149	3.50%	\$ 1,790

Note: Details regarding the Board's outstanding debt can be found in the notes to the financial statements.

<sup>1</sup> Information obtained from the U.S. Bureau of Economic Analysis

**CHEROKEE COUNTY SCHOOL DISTRICT**  
Ratios of General Bonded Debt Outstanding  
Last Ten Fiscal Years

<b>Fiscal Year</b>	<b>Estimated Population<sup>1</sup></b>	<b>Estimated Actual Value</b>	<b>General Obligation Bonds</b>	<b>Percentage of Estimated Actual Taxable Value of Property</b>	<b>Net General Bonded Debt Per Capita</b>
2010	212,232	18,831,540,530	347,211,204	1.84%	1,636.00
2011	215,189	16,994,048,500	375,503,204	2.21%	1,744.99
2012	217,820	15,800,493,755	358,703,523	2.27%	1,646.79
2013	220,773	14,566,575,768	381,370,760	2.62%	1,727.43
2014	224,487	14,841,883,193	422,124,630	2.84%	1,880.40
2015	230,396	16,208,183,265	470,775,819	2.90%	2,043.33
2016	235,424	17,107,609,713	454,738,763	2.66%	1,931.57
2017	241,600	18,285,198,955	452,858,109	2.48%	1,874.41
2018	247,573	19,975,808,820	471,103,225	2.36%	1,902.89
2019	254,149	21,196,353,003	454,873,073	2.15%	1,789.79

Note: Details about the School Board's outstanding debt can be found in the notes to the financial statements.

<sup>1</sup> Population data can be found in the Schedule of Demographic and Economic Statistics table

**CHEROKEE COUNTY SCHOOL DISTRICT**  
Direct and Overlapping Governmental Activities Debt  
As of June 30, 2019

<u>Governmental Unit</u>	<u>Amount of Outstanding Debt</u>	<u>Estimated Percentage Applicable<sup>1</sup></u>	<u>Estimated Share of Overlapping Debt</u>
Direct General Obligation Debt:			
Cherokee County Board of Education			
General Obligation Bonds <sup>2</sup>	\$ 454,873,073	100%	\$ 454,873,073
Overlapping General Obligation Debt:			
Cherokee County, Georgia			
General Obligation Bonds	62,034,037	100%	62,034,037
Resources Recovery			
Development Authority of Cherokee County (securing its Solid Waste Disposal Revenue Bonds) <sup>3</sup>	<u>10,693,205</u>	100%	<u>10,693,205</u>
 Total Direct and Overlapping Debt	 <u>\$ 527,600,315</u>		 <u>\$ 527,600,315</u>

Sources: Assessed value data used to estimate applicable percentages provided by the Cherokee County Tax Commissioner. All amounts shown were obtained as of September 30, 2018 unless indicated otherwise.

<sup>1</sup> The percentage of each overlapping entity's outstanding debt chargeable to property in the District is calculated by dividing the gross assessed valuation of property in the District by the gross assessed valuation of property on the overlapping entity.

<sup>2</sup> As of June 30, 2019

<sup>3</sup> Cherokee County's obligation to levy ad valorem tax to make payments to the Resource Recovery Development Authority of Cherokee County is limited by law to one mill a year.

**CHEROKEE COUNTY SCHOOL DISTRICT**  
**Legal Debt Margin**  
**Last Ten Fiscal Years**

	<b>2010</b>	<b>2011</b>	<b>2012</b>	<b>2013</b>	<b>2014</b>	<b>2015</b>	<b>2016</b>	<b>2017</b>	<b>2018</b>	<b>2019</b>
Assessed Value	\$ 7,532,616,212	\$ 6,797,619,400	\$ 6,320,197,502	\$ 5,826,630,307	\$ 5,936,753,277	\$ 6,483,273,306	\$ 6,843,043,885	\$ 7,314,079,582	\$ 7,990,323,528	\$ 8,478,541,201
Debt Limit <sup>1</sup>	\$ 753,261,621	\$ 679,761,940	\$ 632,019,750	\$ 582,663,031	\$ 593,675,328	\$ 648,327,331	\$ 684,304,389	\$ 731,407,958	\$ 799,032,353	\$ 847,854,120
Total Net Debt Applicable to Limit: General Obligation Bonds	<u>342,380,000</u>	<u>375,503,204</u>	<u>350,705,000</u>	<u>366,865,000</u>	<u>396,530,000</u>	<u>425,260,000</u>	<u>405,430,000</u>	<u>404,395,000</u>	<u>422,505,000</u>	<u>413,085,000</u>
Legal Debt Margin	<u>\$ 410,881,621</u>	<u>\$ 304,258,736</u>	<u>\$ 281,314,750</u>	<u>\$ 215,798,031</u>	<u>\$ 197,145,328</u>	<u>\$ 223,067,331</u>	<u>\$ 278,874,389</u>	<u>\$ 327,012,958</u>	<u>\$ 376,527,353</u>	<u>\$ 434,769,120</u>
Total Net Debt Applicable to the Limit as a Percentage of Debt Limit	45.45%	55.24%	55.49%	62.96%	66.79%	65.59%	59.25%	55.29%	52.88%	48.72%

Source: Cherokee County Tax Commissioner, District Records (Assessed Value Statistical table)

<sup>1</sup> Under Article 9, Section 5, Paragraph 1 of the State of Georgia Constitution, the School District's outstanding general obligation debt should not exceed 10% of the assessed value of the taxable property located within the School District.



**CHEROKEE COUNTY SCHOOL DISTRICT**  
Demographic and Economic Statistics  
Last Ten Fiscal Years

<b>Calendar Year</b>	<b>Population<sup>1*</sup></b>	<b>Personal Income (thousands)<sup>1*</sup></b>	<b>Per Capita Income<sup>1*</sup></b>	<b>Median Age<sup>2*</sup></b>	<b>School Enrollment<sup>3</sup></b>	<b>Unemployment Rate<sup>4*</sup></b>
2009	212,232	7,621,819	35,913	35.3	38,225	8.9%
2010	215,189	7,822,541	36,352	36.4	38,636	8.8%
2011	217,820	8,369,366	38,423	36.7	38,761	8.2%
2012	220,773	8,907,672	40,344	37.0	39,222	7.1%
2013	224,487	9,132,064	40,680	37.3	39,644	6.1%
2014	230,396	9,855,842	42,778	37.2	40,517	5.5%
2015	235,424	10,709,537	45,490	37.7	41,169	4.7%
2016	241,600	11,548,667	47,801	38.7	41,769	4.2%
2017	247,573	12,147,718	49,067	39.6	42,148	3.7%
2018	254,149	12,996,343	51,137	38.6	42,277	3.1%

Note: Student Enrollment is based on the data for the 20 day count for the school year (July through June) which occurs within the calendar year.

\* County-wide data

<sup>1</sup> Information obtained from the U.S. Bureau of Economic Analysis

<sup>2</sup> Information obtained from the United States Census Bureau, data.census.gov

<sup>3</sup> Annual 20 day report for School Enrollment record

<sup>4</sup> Information obtained from the United States Department of Labor, Bureau of Labor Statistics

**CHEROKEE COUNTY SCHOOL DISTRICT**

Principal Employers  
Current and Nine Years Ago

Employer	December 31, 2018			December 31, 2009		
	Employees	Rank	Percentage of Total County Employment	Employees	Rank	Percentage of Total County Employment
Cherokee County School District	4,865	1	3.7%	4,549	1	4.2%
Northside Hospital-Cherokee	2,700	2	2.0%			
Cherokee County Government	1,523	3	1.2%	1,304	2	1.2%
Publix Supermarkets	1,248	4	0.9%	700	4	0.6%
Inalfa Roof System	929	5	0.7%			
Wal-Mart Associates, Inc.	900	6	0.7%			
Pilgrim's Pride Corporation	835	7	0.6%	850	3	0.8%
Chart Industries, Inc.	650	8	0.5%	313	5	0.3%
Home Depot	546	9	0.4%			
Universal Alloy Corporation	450	10	0.3%	245	6	0.2%
Piolax Corporation				186	9	0.2%
Meyn America, LLC				218	7	0.2%
Reinhardt College				178	10	0.2%
City of Woodstock				195	8	0.2%
Totals	<u>\$ 14,646</u>		<u>11.0%</u>	<u>\$ 8,738</u>		<u>8.0%</u>

Information is available only by calendar year; therefore, data reported is for December 31, 2018 and December 31, 2009. Principal Employers within the county provided by the 2018 and 2009 Cherokee County Government CAFRs.

Source: Cherokee County Government

**CHEROKEE COUNTY SCHOOL DISTRICT**

Employees by Function  
Last Ten Fiscal Years

<b>Function</b>	<b>2010</b>	<b>2011</b>	<b>2012</b>	<b>2013</b>	<b>2014</b>	<b>2015</b>	<b>2016</b>	<b>2017</b>	<b>2018</b>	<b>2019</b>
Instructional Services	2,809	2,813	2,757	2,688	2,726	2,889	3,003	3,163	3,184	3,289
Pupil Services	144	150	165	174	177	178	203	184	200	207
Improvement of Instructional Services	84	83	87	84	86	96	97	118	120	125
Educational Media Services	41	49	50	49	49	49	48	46	46	42
General Administration	10	11	11	11	11	11	11	11	12	10
School Administration	316	307	309	290	275	283	289	287	302	289
Support Services - Business	32	27	27	27	26	26	26	29	30	30
Maintenance and Operation	303	299	301	297	58	58	65	66	69	73
Student Transportation Services	448	452	446	441	435	445	467	489	507	524
Support Services - Central	27	22	22	22	21	21	25	27	28	21
Other Support Services	-	-	-	-	-	-	-	-	-	-
School Nutrition	312	311	300	294	289	292	294	291	291	293
Facilities Acquisition and Construction	-	-	-	-	-	-	-	-	-	-
<b>Total</b>	<b>4,526</b>	<b>4,524</b>	<b>4,475</b>	<b>4,377</b>	<b>4,153</b>	<b>4,348</b>	<b>4,528</b>	<b>4,711</b>	<b>4,789</b>	<b>4,903</b>
<i>Percentage Change from Prior Fiscal Year</i>	0.00%	-0.04%	-1.08%	-2.19%	-5.12%	4.70%	4.14%	4.04%	1.66%	2.38%

Source: Cherokee County School District Payroll historical records as of the end of the fiscal year.

**CHEROKEE COUNTY SCHOOL DISTRICT**  
**Teacher Salary Schedule**  
**Last Ten Fiscal Years**

<b>Fiscal Year</b>	<b>School District's Minimum Salary<sup>1</sup></b>	<b>Minimum State Salary<sup>2,3</sup></b>	<b>School District's % of State Minimum<sup>3</sup></b>	<b>School District's Maximum Salary<sup>1</sup></b>	<b>School District's Average Salary<sup>1</sup></b>	<b>State-wide Average<sup>3</sup></b>	<b>School District's % of State Average<sup>3</sup></b>
2010	35,145	31,586	111%	86,669	60,907	52,823	115%
2011	35,145	31,586	111%	86,669	60,907	52,871	115%
2012	35,145	31,586	111%	86,669	60,907	53,002	115%
2013	35,145	31,586	111%	86,669	60,907	52,956	115%
2014	35,145	31,586	111%	86,669	60,907	52,973	115%
2015	35,496	31,586	112%	89,254	62,375	53,424	117%
2016	35,496	31,586	112%	89,254	62,375	54,215	115%
2017	35,496	31,586	112%	90,146	62,821	55,537	113%
2018	36,222	32,217	112%	91,960	64,091	56,342	114%
2019	36,586	32,217	114%	92,887	64,737	57,072	113%

**Data Source:**

<sup>1</sup> Annual CCSD Salary Handbooks

<sup>2</sup> Georgia Department of Education

<sup>3</sup> Georgia Governor's Office of Student Achievement, K-12 Public Schools Report Card

**CHEROKEE COUNTY SCHOOL DISTRICT**

School Buildings Capacity  
Last Ten Fiscal Years

School Name	2010	2011	2012	2013	2014	2015	2016	2017	2018	2019
Arnold Mill ES										
Capacity	1,138	1,113	1,118	1,156	1,131	1,137	1,062	1,113	1,100	1,100
Enrollment	1,035	846	820	835	830	851	781	788	783	788
Avery ES										
Capacity	1,137	1,137	1,143	1,143	1,143	1,150	1,150	1,175	1,150	1,150
Enrollment	1,147	1,175	1,152	1,110	1,061	1,034	983	1,015	1,011	1,034
Ball Ground ES										
Capacity	488	488	488	1,175	1,200	1,188	1,163	1,175	1,163	1,137
Enrollment	423	417	400	529	520	559	500	508	524	552
Bascomb ES										
Capacity	1,175	1,175	1,188	1,188	1,231	1,231	1,237	1,263	1,250	1,237
Enrollment	1,124	1,036	989	926	1,082	1,013	1,016	981	943	902
Boston ES										
Capacity	938	938	938	925	883	887	887	891	883	912
Enrollment	846	888	841	500	590	599	615	617	593	582
Canton ES										
Capacity	1,138	1,150	1,168	1,168	1,168	1,175	1,163	1,163	1,150	-
Enrollment	830	843	866	854	885	755	820	826	767	-
Carmel ES										
Capacity	1,425	1,325	1,300	1,300	1,325	1,337	1,275	1,287	1,275	1,275
Enrollment	1,269	1,274	1,269	1,226	1,208	1,179	1,061	1,020	1,041	981
Clark Creek ES										
Capacity	-	-	-	1,200	1,175	1,175	1,175	1,200	1,193	1,175
Enrollment	-	-	-	905	948	952	1,011	1,082	1,159	1,208
Clayton ES										
Capacity	588	663	663	650	663	462	462	456	462	462
Enrollment	418	352	326	314	296	226	246	232	227	257
Free Home ES										
Capacity	312	312	306	306	306	356	350	362	362	362
Enrollment	303	299	334	311	330	328	307	314	325	327
Hasty ES										
Capacity	1,138	1,156	1,150	1,156	1,156	1,181	1,193	1,187	1,163	1,150
Enrollment	678	720	750	809	846	858	891	907	882	911
Hickory Flat ES										
Capacity	1,125	1,050	1,063	895	895	913	913	925	918	918
Enrollment	993	954	586	551	539	545	522	473	513	595
Holly Springs ES										
Capacity	1,418	1,412	1,418	1,418	1,418	1,438	1,406	1,250	1,187	1,187
Enrollment	1,225	1,266	979	990	967	953	938	805	754	738
Indian Knoll ES										
Capacity	-	-	1,150	1,150	1,156	1,162	1,150	1,193	1,187	1,193
Enrollment	-	-	907	1,007	1,052	1,094	1,130	991	931	922
Johnston ES										
Capacity	1,025	1,000	1,000	1,006	750	763	643	875	687	687
Enrollment	988	890	572	543	550	566	571	570	584	578
Knox ES										
Capacity	1,175	1,175	1,162	1,168	1,168	1,143	1,143	1,193	1,187	1,187
Enrollment	798	847	823	831	847	749	773	741	781	993
Liberty ES										
Capacity	1,556	1,556	1,538	1,538	1,550	1,562	1,562	1,575	1,575	1,575
Enrollment	1,400	1,391	1,343	1,332	1,281	1,252	1,234	1,207	1,196	1,090
Little River ES										
Capacity	1,162	1,143	1,168	1,143	1,137	1,143	1,509	1,512	1,506	1,506
Enrollment	1,166	1,099	1,169	1,236	1,335	1,369	1,361	1,338	1,324	1,358
Macedonia ES										
Capacity	850	838	850	850	850	856	862	862	862	862
Enrollment	809	822	846	799	795	760	774	770	785	744
Mountain Road ES										
Capacity	637	643	643	637	637	643	631	713	687	687
Enrollment	550	555	556	463	569	561	537	419	429	441

**CHEROKEE COUNTY SCHOOL DISTRICT**

School Buildings Capacity  
Last Ten Fiscal Years

School Name	2010	2011	2012	2013	2014	2015	2016	2017	2018	2019
Oak Grove ES										
Capacity	862	868	862	862	883	891	793	775	687	687
Enrollment	793	787	808	455	533	563	575	512	466	449
R. M. Moore ES										
Capacity	725	1,063	1,075	1,075	1,075	1,062	1,062	1,062	1,062	1,050
Enrollment	581	604	615	574	546	417	397	420	384	872
Sixes ES										
Capacity	1,018	1,025	1,025	1,038	1,038	1,050	879	883	883	879
Enrollment	1,053	1,010	872	820	774	768	724	684	716	733
Woodstock ES										
Capacity	1,187	1,187	1,187	1,193	1,213	1,231	10,231	1,237	1,200	1,181
Enrollment	988	1,005	1,004	1,023	1,100	1,111	1,138	1,176	1,163	1,151
Chapman IS										
Capacity	1,018	988	1,000	975	-	-	-	-	-	-
Enrollment	1,205	1,215	1,125	921	-	-	-	-	-	-
Creeklane MS										
Capacity	1,275	1,275	1,275	1,263	1,306	1,281	1,287	1,287	1,287	1,362
Enrollment	1,278	1,305	1,385	1,393	1,420	1,392	1,456	1,494	1,543	1,532
Dean Rusk MS										
Capacity	900	912	918	918	925	925	925	1,600	1,650	1,650
Enrollment	789	834	838	836	861	894	927	1,479	1,522	1,546
E. T. Booth MS										
Capacity	1,131	1,062	1,062	1,062	1,631	1,650	1,650	1,663	1,650	1,650
Enrollment	1,168	1,165	1,199	1,191	1,634	1,679	1,688	1,763	1,786	1,821
Freedom MS										
Capacity	1,163	1,175	1,175	1,150	1,150	1,187	1,125	1,187	1,187	1,187
Enrollment	1,009	1,068	1,138	1,173	1,174	1,114	1,163	1,165	1,163	1,133
Mill Creek MS										
Capacity	1,163	1,163	1,175	1,175	1,175	1,187	1,250	1,293	1,287	1,287
Enrollment	1,019	1,117	1,152	1,160	1,216	1,286	1,437	1,416	1,414	1,410
Teasley MS										
Capacity	1,012	912	912	912	912	1,525	1,538	1,550	1,518	1,525
Enrollment	745	787	801	828	870	1,399	1,388	1,418	1,522	1,582
Woodstock MS										
Capacity	968	1,113	1,125	1,125	1,125	1,131	1,125	1,088	1,075	1,075
Enrollment	1,025	1,048	1,081	1,096	1,116	1,178	1,124	1,157	1,193	1,224
Cherokee HS										
Capacity	2,075	2,093	2,093	2,081	2,063	2,087	2,163	2,387	2,512	3,440
Enrollment	2,072	2,041	2,031	2,051	2,080	2,293	2,465	2,589	2,647	2,689
Creekview HS										
Capacity	1,775	1,775	1,800	1,825	1,813	1,838	1,900	1,925	1,975	1,950
Enrollment	1,645	1,730	1,700	1,732	1,745	1,818	1,873	1,993	1,995	2,001
Etowah HS										
Capacity	2,506	2,500	2,488	2,488	2,363	3,175	3,150	3,175	3,175	3,175
Enrollment	2,132	2,116	2,211	2,285	2,374	2,356	2,377	2,381	2,421	2,384
River Ridge HS										
Capacity	-	2,013	2,000	1,975	1,975	2,025	2,025	2,050	2,025	2,025
Enrollment	-	705	1,081	1,425	1,502	1,567	1,658	1,725	1,809	1,868
Sequoyah HS										
Capacity	1,731	1,725	1,725	1,725	1,725	1,688	1,650	1,737	2,375	2,375
Enrollment	1,760	1,699	1,560	1,521	1,593	1,644	1,765	1,848	1,912	1,941
Woodstock HS										
Capacity	2,262	2,100	2,100	2,100	1,862	1,900	1,962	2,413	2,393	2,387
Enrollment	2,141	1,992	1,927	1,851	1,949	2,108	2,208	2,274	2,308	2,228

Source: Cherokee County School District available records (Planning and Facilities, Division of Support Services) and annual 20-day enrollment report. Capacity schedule does not include information on preschools and center locations within the school district.

**CHEROKEE COUNTY SCHOOL DISTRICT**  
 Number of Personnel and Ratio of Pupils to Professional Personnel  
 Last Ten Fiscal Years

	<b>Professional Personnel<sup>1</sup></b>	<b>Other Operating Personnel<sup>2</sup></b>	<b>Service Personnel<sup>3</sup></b>	<b>Total Personnel</b>	<b>Student Enrollment<sup>4</sup></b>	<b>Ratio of Pupils to Professional Personnel</b>
2010	2,795	697	999	4,491	38,225	13.7 to 1
2011	2,727	764	1,001	4,492	38,636	14.2
2012	2,666	752	1,010	4,428	38,761	14.5
2013	2,676	733	938	4,347	39,222	14.7
2014	2,811	763	748	4,322	39,644	14.1
2015	2,963	791	776	4,530	40,517	13.7
2016	3,097	851	749	4,697	41,169	13.3
2017	3,172	838	765	4,775	41,769	13.2
2018	3,231	841	779	4,851	42,148	13.0
2019	3,246	815	822	4,883	42,277	13.0

Source: Historical personnel records from Human Resource Department as of the beginning of the fiscal year.

<sup>1</sup> Professional personnel consists of all certified personnel including teachers, librarians, counselors, supervisors, consultants, coordinators, principals, assistant principals and other leadership personnel.

<sup>2</sup> Other Operating personnel includes non-certified leadership personnel, classroom aides, secretarial and clerical employees, and other technicians.

<sup>3</sup> Service personnel includes food service personnel, custodial employees, bus drivers and maintenance/warehouse employees.

<sup>4</sup> Annual 20 day report for School Enrollment record

**CHEROKEE COUNTY SCHOOL DISTRICT**

Operating Statistics  
Last Ten Fiscal Years

---

---

<b>Fiscal Year</b>	<b>Expenditures<sup>1</sup></b>	<b>Daily Enrollment<sup>2</sup></b>	<b>Cost per Pupil Enrolled</b>	<b>Percentage of Change</b>
2010	396,627,032	38,225	10,376	-2.17%
2011	373,943,827	38,636	9,679	-6.72%
2012	373,730,871	38,761	9,642	-0.38%
2013	383,344,362	39,222	9,774	1.37%
2014	382,783,296	39,644	9,656	-1.21%
2015	392,181,775	40,517	9,679	0.25%
2016	411,926,377	41,169	10,006	3.37%
2017	463,199,245	41,769	11,090	10.83%
2018	466,594,643	42,148	11,070	-0.17%
2019	466,244,580	42,277	11,028	-0.38%

<sup>1</sup> Changes in Net Position statistical table

<sup>2</sup> Annual 20 day report for School Enrollment record



# Compliance Section

---



Cherokee County  
School District

---

**INDEPENDENT AUDITOR'S REPORT ON INTERNAL CONTROL OVER FINANCIAL  
REPORTING AND ON COMPLIANCE AND OTHER MATTERS BASED ON AN AUDIT OF  
FINANCIAL STATEMENTS PERFORMED IN ACCORDANCE WITH *GOVERNMENT  
AUDITING STANDARDS***

To the Superintendent and Members of  
The Cherokee County Board of Education  
Canton, Georgia

We have audited, in accordance with the auditing standards generally accepted in the United States of America and the standards applicable to financial audits contained in *Government Auditing Standards* issued by Comptroller General of the United States, the financial statements of the governmental activities, each major fund, and the aggregate remaining fund information of the Cherokee County School District (the "School District") as of and for the year ended June 30, 2019, and the related notes to the financial statements, which collectively comprise the School District's basic financial statements, and have issued our report thereon dated December 9, 2019.

**Internal Control Over Financial Reporting**

In planning and performing our audit of the financial statements, we considered the School District's internal control over financial reporting (internal control) to determine the audit procedures that are appropriate in the circumstances for the purpose of expressing our opinions on the financial statements, but not for the purpose of expressing an opinion on the effectiveness of the School District's internal control. Accordingly, we do not express an opinion on the effectiveness of the School District's internal control.

A *deficiency in internal control* exists when the design or operation of a control does not allow management or employees, in the normal course of performing their assigned functions, to prevent or detect and correct misstatements on a timely basis. A *material weakness* is a deficiency, or combination of deficiencies, in internal control such that there is a reasonable possibility that a material misstatement of the entity's financial statements will not be prevented, or detected and corrected on a timely basis. A *significant deficiency* is a deficiency, or a combination of deficiencies, in internal control that is less severe than a material weakness, yet important enough to merit attention by those charged with governance.


Our consideration of internal control was for the limited purpose described in the first paragraph of this section and was not designed to identify all deficiencies in internal control that might be material weaknesses or significant deficiencies. Given these limitations, during our audit we did not identify any deficiencies in internal control that we consider to be material weaknesses. However, material weaknesses may exist that have not been identified.

### **Compliance and Other Matters**

As part of obtaining reasonable assurance about whether the School District's financial statements are free from material misstatement, we performed tests of its compliance with certain provisions of laws, regulations, contracts, and grant agreements, noncompliance with which could have a direct and material effect on the determination of financial statement amounts. However, providing an opinion on compliance with those provisions was not an objective of our audit, and accordingly, we do not express such an opinion. The results of our tests disclosed no instances of noncompliance or other matters that are required to be reported under *Government Auditing Standards*.

### **Purpose of This Report**

The purpose of this report is solely to describe the scope of our testing of internal control and compliance and the results of that testing, and not to provide an opinion on the effectiveness of the entity's internal control or on compliance. This report is an integral part of an audit performed in accordance with *Government Auditing Standards* in considering the entity's internal control and compliance. Accordingly, this communication is not suitable for any other purpose.

A handwritten signature in black ink that reads "Williamson & Company". The signature is written in a cursive, flowing style.

Williamson and Company  
Certified Public Accountants  
December 9, 2019

---

**INDEPENDENT AUDITOR'S REPORT ON COMPLIANCE FOR EACH MAJOR  
FEDERAL PROGRAM AND ON INTERNAL CONTROL OVER COMPLIANCE  
REQUIRED BY THE UNIFORM GUIDANCE**

To the Superintendent and Members of  
The Cherokee County Board of Education  
Canton, Georgia

**Report on Compliance for Each Major Federal Program**

We have audited the Cherokee County School District's (the "School District") compliance with the types of compliance requirements described in the *OMB Compliance Supplement* that could have a direct and material effect on each of the School District's major federal programs for the year ended June 30, 2019. The School District's major federal programs are identified in the Summary of Auditor's Results section of the accompanying Schedule of Findings and Questioned Costs.

***Management's Responsibility***

Management is responsible for compliance with federal statutes, regulations, and the terms and conditions of its federal awards applicable to its federal programs.

***Auditor's Responsibility***

Our responsibility is to express an opinion on compliance for each of the School District's major federal programs based on our audit of the types of compliance requirements referred to above. We conducted our audit of compliance in accordance with auditing standards generally accepted in the United States of America; the standards applicable to financial audits contained in *Government Auditing Standards*, issued by the Comptroller General of the United States; and the audit requirements of *Title 2 U.S. Code of Federal Regulations Part 200, Uniform Administrative Requirements, Cost Principles, and Audit Requirements for Federal Awards (Uniform Guidance)*. Those standards and the Uniform Guidance require that we plan and perform the audit to obtain reasonable assurance about whether noncompliance with the types of compliance requirements referred to above that could have a direct and material effect on a major federal program occurred. An audit includes examining, on a test basis, evidence about the School District's compliance with those requirements and performing such other procedures as we considered necessary in the circumstances.

We believe that our audit provides a reasonable basis for our opinion on compliance for each major federal program. However, our audit does not provide a legal determination of the School District's compliance.

### ***Opinion on Each Major Program***

In our opinion, the School District complied, in all material respects, with the types of compliance requirements referred to above that could have a direct and material effect on each of its major federal programs for the year ended June 30, 2019.

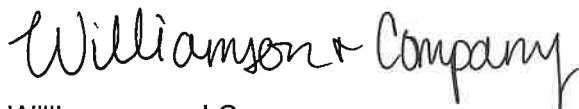
### **Report on Internal Control Over Compliance**

Management of the School District is responsible for establishing and maintaining effective internal control over compliance with the types of compliance requirements referred to above. In planning and performing our audit of compliance, we considered the School District's internal control over compliance with the types of requirements that could have a direct and material effect on each major federal program to determine the auditing procedures that are appropriate in the circumstances for the purpose of expressing an opinion on compliance for each major federal program and to test and report on internal control over compliance in accordance with the Uniform Guidance, but not for the purpose of expressing an opinion on the effectiveness of internal control over compliance. Accordingly, we do not express an opinion on the effectiveness of the School District's internal control over compliance.

*A deficiency in internal control over compliance* exists when the design or operation of a control over compliance does not allow management or employees, in the normal course of performing their assigned functions, to prevent, or detect and correct, noncompliance with a type of compliance requirement of a federal program on a timely basis. *A material weakness in internal control over compliance* is a deficiency, or combination of deficiencies, in internal control over compliance, such that there is a reasonable possibility that material noncompliance with a type of compliance requirement of a federal program will not be prevented, or detected and corrected, on a timely basis. *A significant deficiency in internal control over compliance* is a deficiency, or a combination of deficiencies, in internal control over compliance with a type of compliance requirement of a federal program that is less severe than a material weakness in internal control over compliance, yet important enough to merit attention by those charged with governance.

Our consideration of internal control over compliance was for the limited purpose described in the first paragraph of this section and was not designed to identify all deficiencies in internal control over compliance that might be material weaknesses or significant deficiencies. We did not identify any deficiencies in internal control over compliance that we consider to be material weaknesses. However, material weaknesses may exist that have not been identified.

The purpose of this report on internal control over compliance is solely to describe the scope of our testing of internal control over compliance and the results of that testing based on the requirements of the Uniform Guidance. Accordingly, this report is not suitable for any other purpose.



Williamson and Company  
Certified Public Accountants  
December 9, 2019

**CHEROKEE COUNTY SCHOOL DISTRICT**  
**Schedule of Expenditures of Federal Awards**  
**For the Fiscal Year Ended June 30, 2019**

FUNDING AGENCY PROGRAM/GRANT	CFDA NUMBER	PASS- THROUGH ENTITY ID NUMBER	EXPENDITURES IN PERIOD
Agriculture, U. S. Department of			
Child Nutrition Cluster			
Pass-Through From Georgia Department of Education			
Food Services			
School Breakfast Program	10.553	195GA324N1099	\$ 1,673,532
National School Lunch Program <sup>1</sup>	10.555	195GA324N1099	8,204,830
After School Snack	10.555	195GA324N1099	110,552
School Lunch Equipment	10.579	185GA350N8103	<u>46,724</u>
Total Child Nutrition Cluster			<u>10,035,638</u>
Total U. S. Department of Agriculture			<u>10,035,638</u>
Education, U. S. Department of			
Special Education Cluster			
Pass-Through From Georgia Department of Education			
Special Education			
High Cost Fund Pool	84.027	H027A180073	110,137
Flow Through	84.027	H027A170073	453,112
Flow Through	84.027	H027A180073	5,648,111
Preschool Grants	84.173	H173A180081	<u>200,402</u>
Total Special Education Cluster			<u>6,411,762</u>
Other Programs			
Pass-Through From Georgia Department of Education			
Career and Technical Education - Program Improvement	84.048	V048A150010	228,898
Career and Technical Education - Basic Grants to States	84.048	V048A180010	23,254
Arts in Education - Model Development and Dissemination Grants Program	84.351		256,515
Title IV, Part A Student Support and Academic Enrichment	84.424	S424A170011	46,612
Title IV, Part A Student Support and Academic Enrichment	84.424	S424A180011	177,242
Title III, Part A Language Instruction for English Learners	84.365	S365A170010	17,525
Title III, Part A Language Instruction for English Learners	84.365	S365A180010	333,865
Title III, Part A Language Instruction for Immigrant Students	84.365	S365A180010	27,395
Title II, Improving Teacher Quality State Grants	84.367	S367A170001	240,727
Title II, Improving Teacher Quality State Grants	84.367	S367A180001	411,459
Title II, Advance Placement	84.367	S367A180001	4,500
Title I, Improving the Academic Achievement of the Disadvantaged	84.010	S010A170010	214,766
Title I, Improving the Academic Achievement of the Disadvantaged	84.010	S010A180010	<u>4,314,066</u>
Total Other Programs			<u>6,296,824</u>
Total U. S. Department of Education			<u>12,708,586</u>
Health and Human Services, U. S. Department of			
Child Care and Development Fund Cluster			
Pass-Through From Bright From the Start:			
Georgia Department of Early Care and Learning			
Child Care and Development Block Grant	93.600		392,796
Pass-Through from Ninth District Opportunity, Inc.:			
Georgia Prekindergarten Transition Program	93.575		<u>143,717</u>
Total Child Care and Development Fund Cluster			<u>536,513</u>
Total U. S. Department of Health and Human Services			<u>536,513</u>
Defense, U. S. Department of			
Direct			
Department of the Air Force			
R.O.T.C. Program	12.000		<u>396,259</u>
Total U. S. Department of Defense			<u>396,259</u>
Total Expenditures of Federal Awards			<u>\$ 23,676,996</u>

**CHEROKEE COUNTY SCHOOL DISTRICT**  
Schedule of Expenditures of Federal Awards  
For the Fiscal Year Ended June 30, 2019

---

---

Notes to the Schedule of Expenditures of Federal Awards

**Note 1. Basis of Presentation**

The accompanying schedule of expenditures of federal awards (the "Schedule") includes the federal award activity of the Cherokee County Board of Education (the "Board") under programs of the federal government for the year ended June 30, 2018. The information in this Schedule is presented in accordance with the requirements of Title 2 U.S. Code of Federal Regulations Part 200, *Uniform Administrative Requirements, Cost Principles, and Audit Requirements for Federal Awards* (Uniform Guidance). Because the Schedule presents only a selected portion of the operations of the Board, it is not intended to and does not present the financial position or changes in net position of the Board.

**Note 2. Summary of Significant Accounting Policies**

Expenditures reported on the Schedule are reported on the modified accrual basis of accounting. Such expenditures are recognized following, as applicable, either the cost principles in OMB Circular A-87, *Cost Principles for State, Local, and Indian Tribal Governments*, or the cost principles contained in Title 2 U.S. Code of Federal Regulations Part 200, *Uniform Administrative Requirements, Cost Principles, and Audit Requirements for Federal Awards*, wherein certain types of expenditures are not allowable or are limited as to reimbursement. The School District has elected not to use the 10-percent de minimis indirect cost rate as allowed under the Uniform Guidance.

The School District did not provide federal assistance to any subrecipient.

Total federal revenues presented in the Statement of Revenues, Expenditures, and Changes in Fund Balance - Governmental Funds differ from the total federal expenditures presented in this schedule due to federal payments received that were not associated with a specific federal program. Those differences totaled \$180,006.

<sup>1</sup> Includes the federally assigned value of donated commodities for the Food Donation Program in the amount of \$1,773,662.

**CHEROKEE COUNTY SCHOOL DISTRICT**  
 Schedule of Findings and Questioned Costs  
 Year Ended June 30, 2019

**Section I - Summary of Auditor's Results**

**Financial Statements**

Type of auditor's report issue:

Independent Auditor Report on Financial Statements Unmodified

Internal control over financial reporting:

Material weakness identified? No

Significant deficiencies identified? None Reported

Noncompliance material to financial statements noted? No

**Federal Awards**

Internal control over major programs:

Material weakness identified? No

Significant deficiencies identified? None Reported

Type of auditor's report issued on compliance for major federal programs: Unmodified

Any audit findings disclosed that are required to be reported in accordance with 2 CFR 200.616(a)? No

Identification of major programs:

<u>CFDA Number(s)</u>	<u>Name of Federal Program or Cluster</u>
10.553, 10.555, 10.579 84.010	Child Nutrition Cluster Title I - Improving the Academic Achievement of the Disadvantaged

Dollar threshold used to distinguish between Type A and Type B programs: \$ 750,000

Auditee qualified as low-risk auditee? No



**CHEROKEE COUNTY SCHOOL DISTRICT**  
Schedule of Findings and Questioned Costs  
Year Ended June 30, 2019

---

**Section II - Financial Statement Findings and Questioned Costs**

No matters were reported.

**Section III - Federal Award Findings and Questioned Costs**

No matters were reported.

**Section IV - Status of Prior Year Findings and Questioned Costs**

None Noted



Cherokee County  
School District

**CHEROKEE COUNTY SCHOOL DISTRICT  
DR. BRIAN V. HIGHTOWER  
SUPERINTENDENT OF SCHOOLS**

**SCHOOL BOARD MEMBERS**

**Kyla Cromer, School Board Chair  
Kelly Poole, School Board Vice-Chair  
Mike Chapman  
John Harmon  
Patsy Jordan  
Clark Menard  
Robert Rechsteiner**